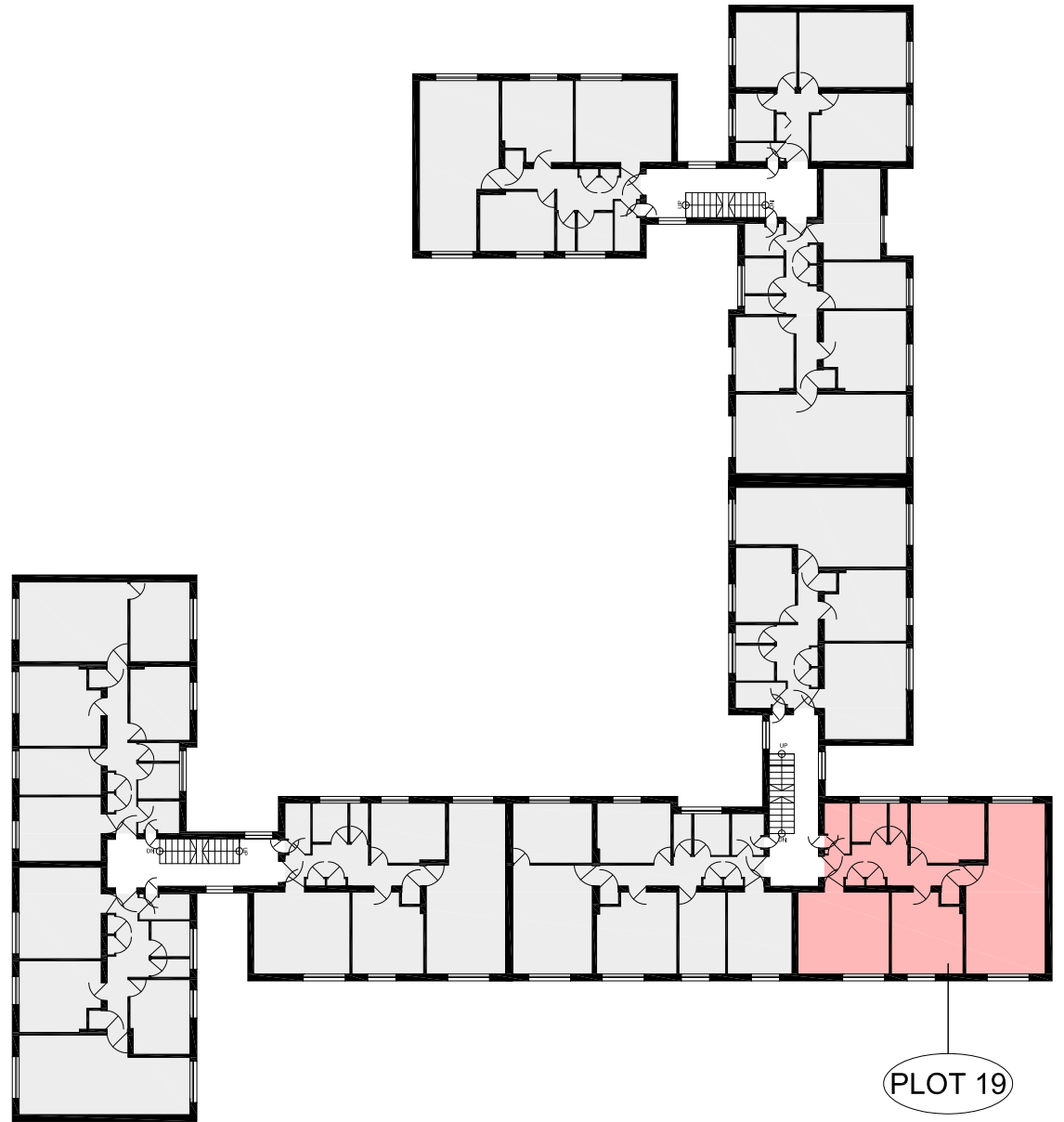
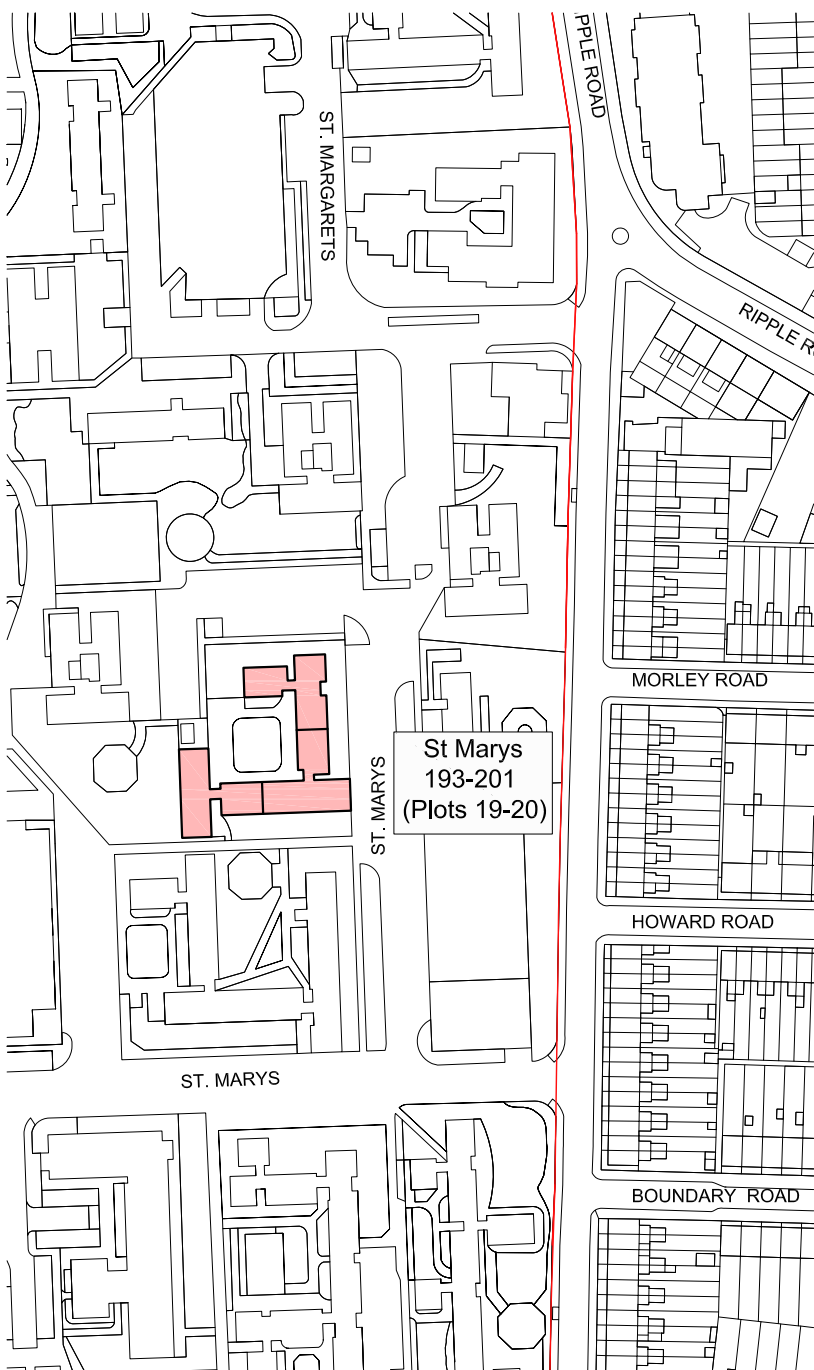


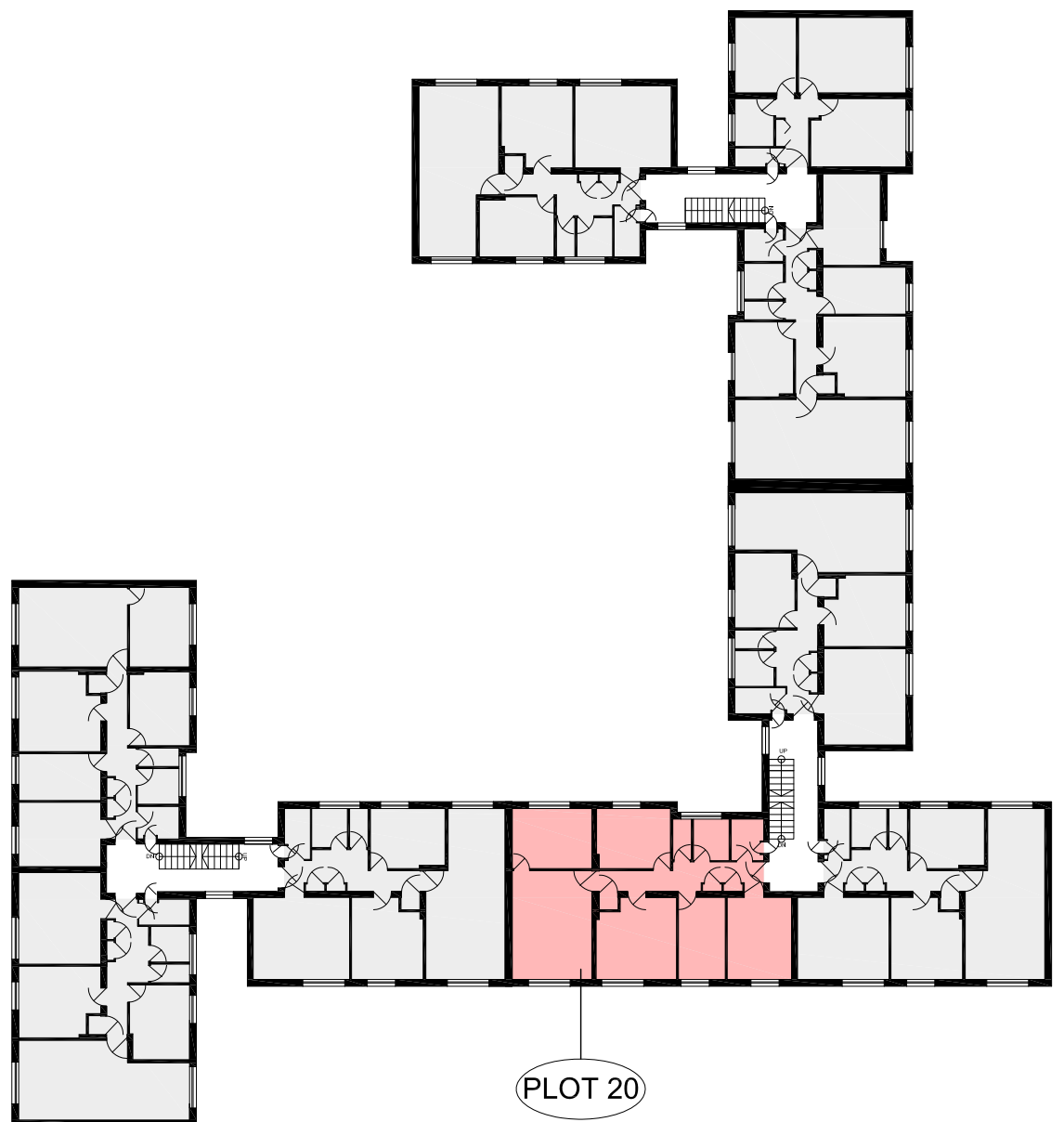
196 St Marys, First Floor



location map



200 St Marys, Second Floor



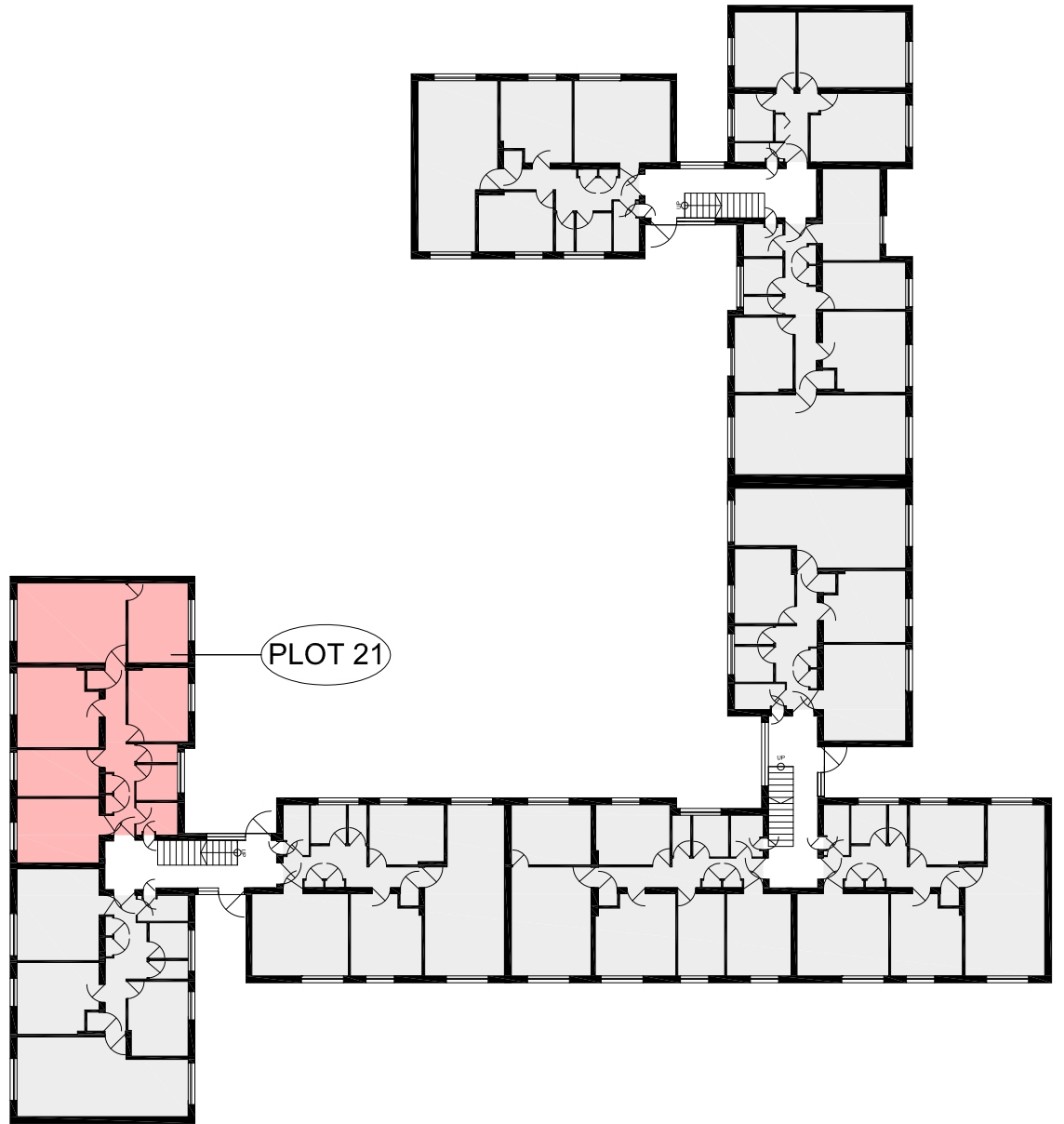
REV	DATE	DESCRIPTION	CKD
A	17.07.2015	DRAFT	
B	02.10.2015	FINAL	

Do not scale from this drawing.  
 This map is reproduced from Ordnance Survey material with the permission of Ordnance Survey on behalf of the Controller of Her Majesty's Stationery Office © Crown copyright. Unauthorised reproduction infringes Crown copyright and may lead to prosecution or civil proceedings.  
 100019280 (2015)

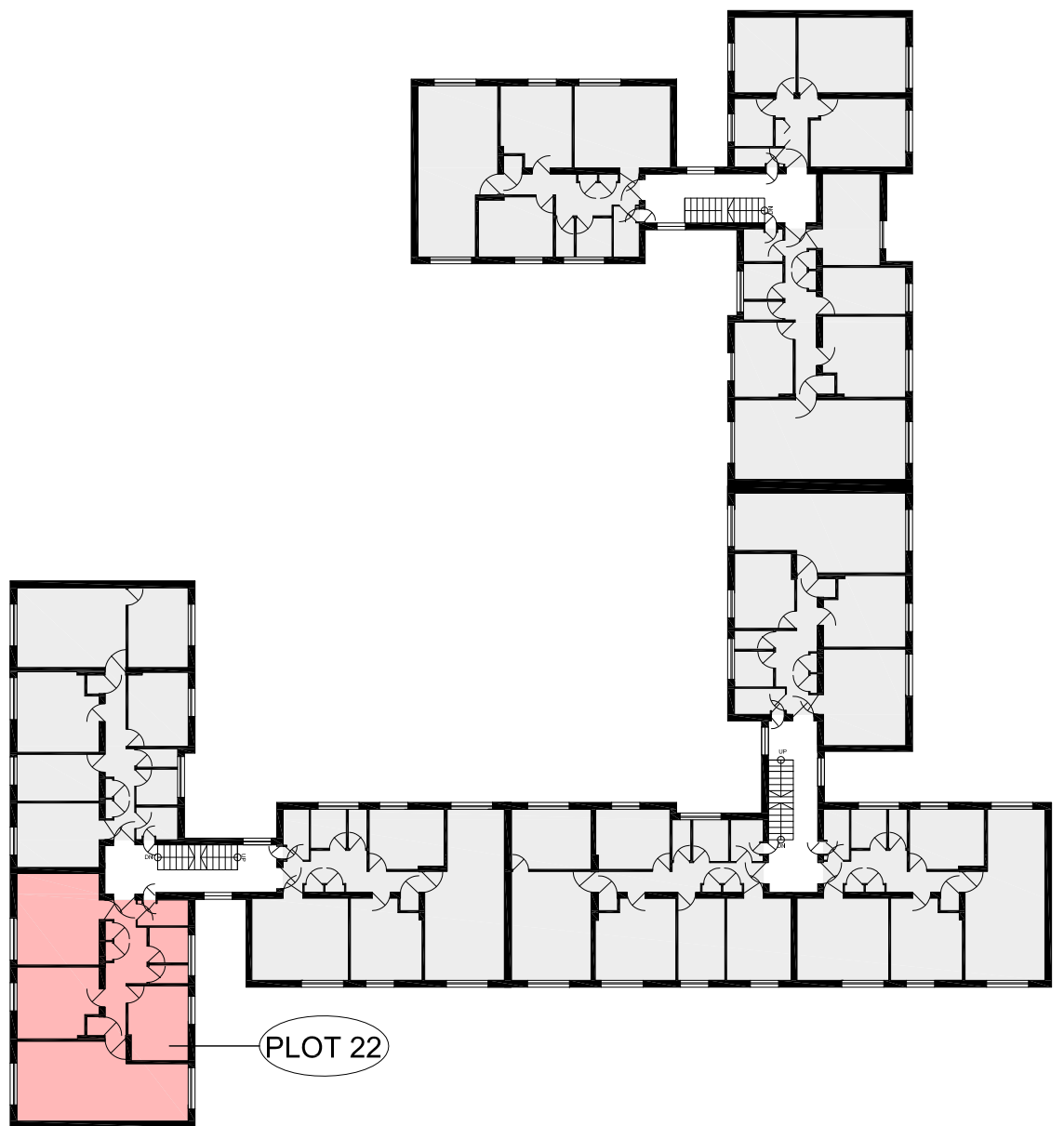
**KEY**  
 Proposed extent of the scheme  
 Location of Plots to be acquired

MAP REFERRED TO IN THE LONDON BOROUGH OF BARKING AND DAGENHAM (GASCOIGNE EAST PHASE 1 AND 2, BARKING) COMPULSORY PURCHASE ORDER 2015  
 CPO\_09\_SMS\_06  
 SCALE 1:300 @A3

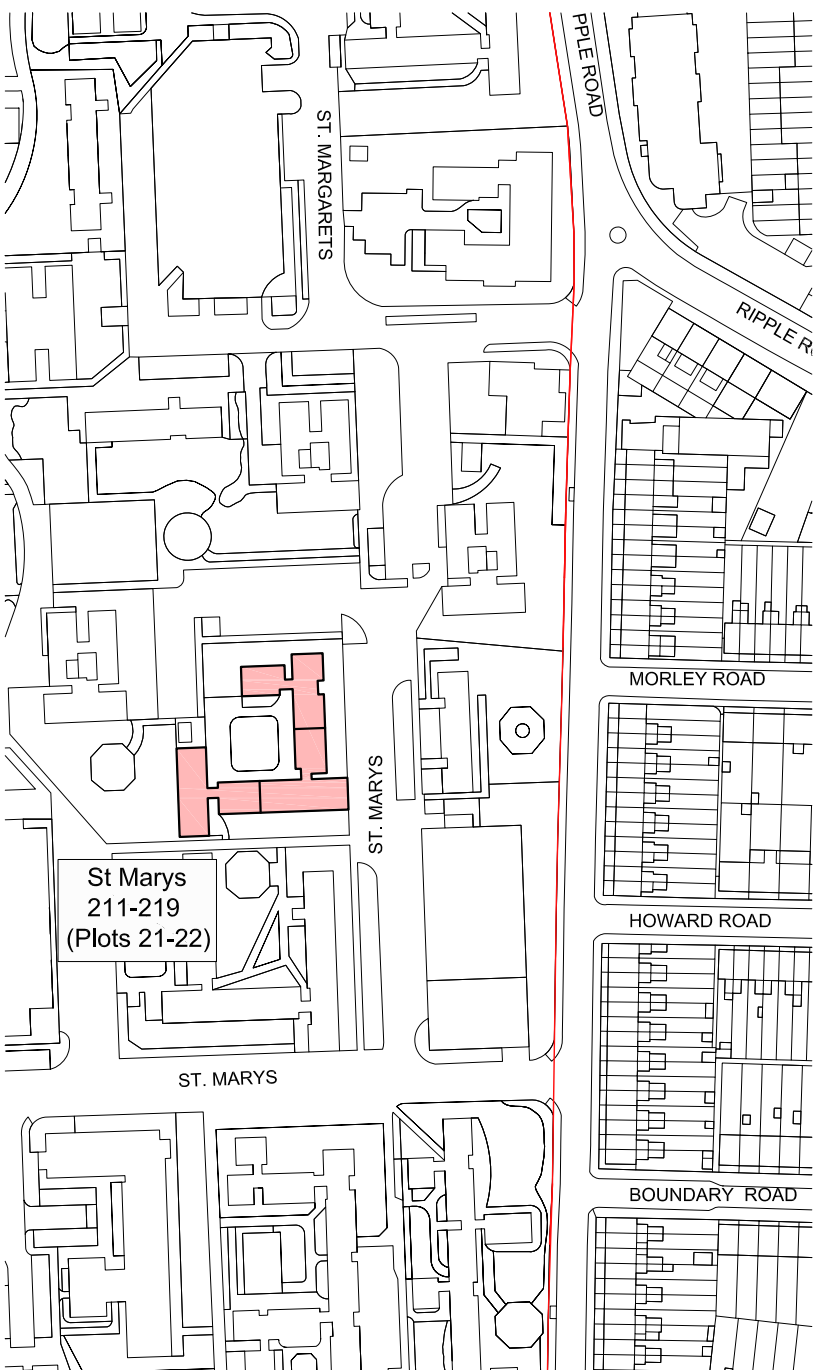
213 St Marys, Ground Floor



218 St Marys, Second Floor



Location map



REV	DATE	DESCRIPTION	CKD
A	17.07.2015	DRAFT	
B	02.10.2015	FINAL	

Do not scale from this drawing.  
 This map is reproduced from Ordnance Survey material with the permission of Ordnance Survey on behalf of the Controller of Her Majesty's Stationery Office © Crown copyright. Unauthorised reproduction infringes Crown copyright and may lead to prosecution or civil proceedings.  
 100019280 (2015)

KEY

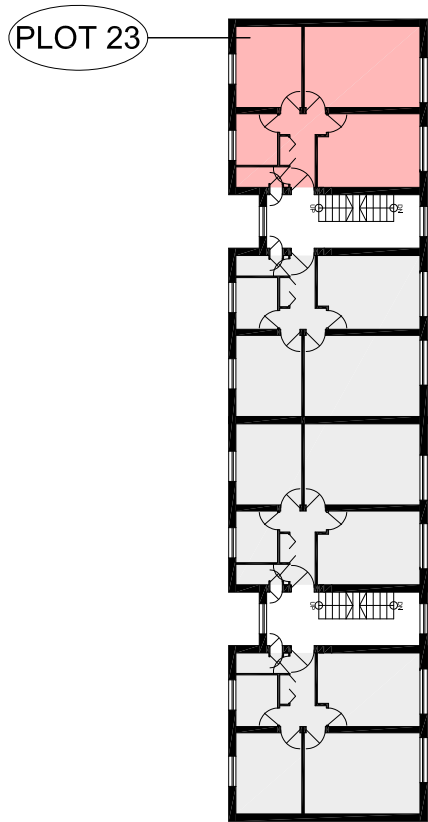
- Proposed extent of the scheme
- Location of Plots to be acquired



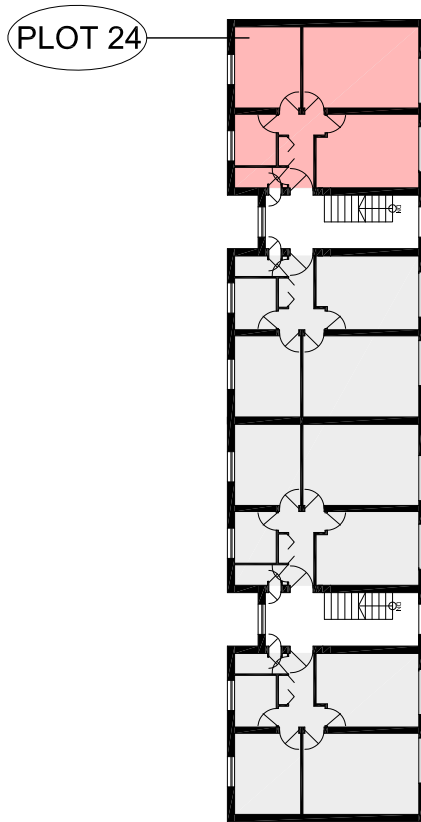
MAP REFERRED TO IN THE LONDON BOROUGH OF BARKING AND DAGENHAM (GASCOIGNE EAST PHASE 1 AND 2, BARKING) COMPULSORY PURCHASE ORDER 2015  
 CPO\_10\_SMS\_07

SCALE 1:300 @A3

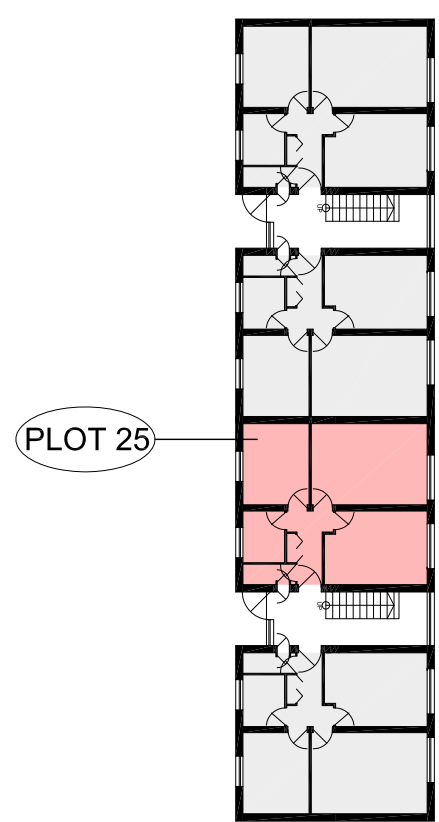
223 St Marys, First Floor



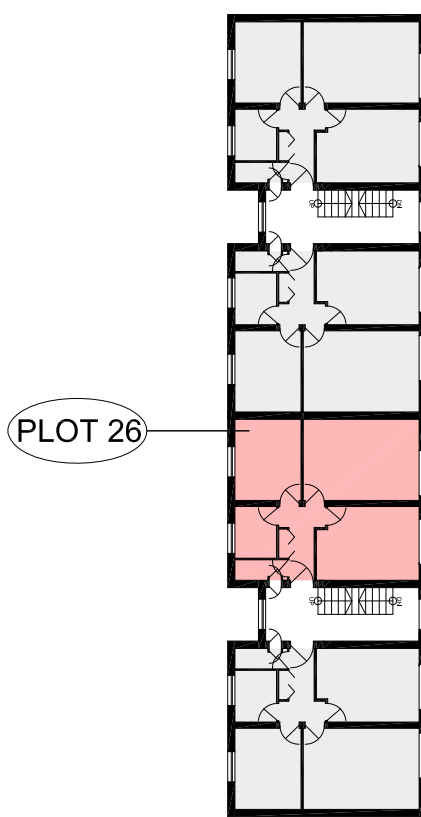
225 St Marys, Second Floor



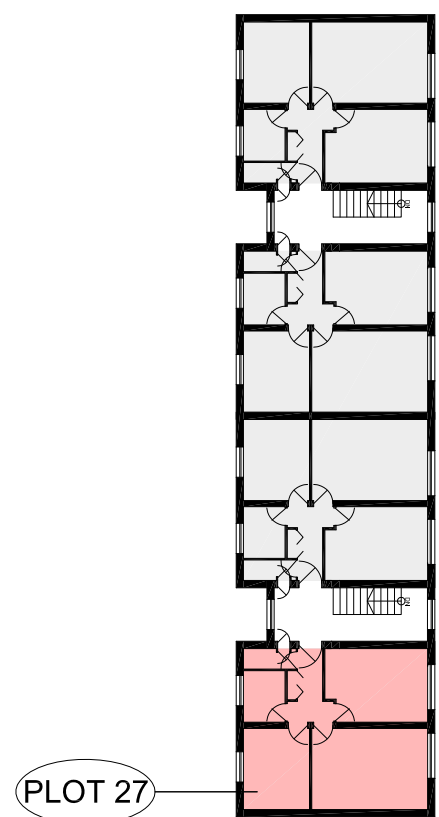
227 St Marys, Ground Floor



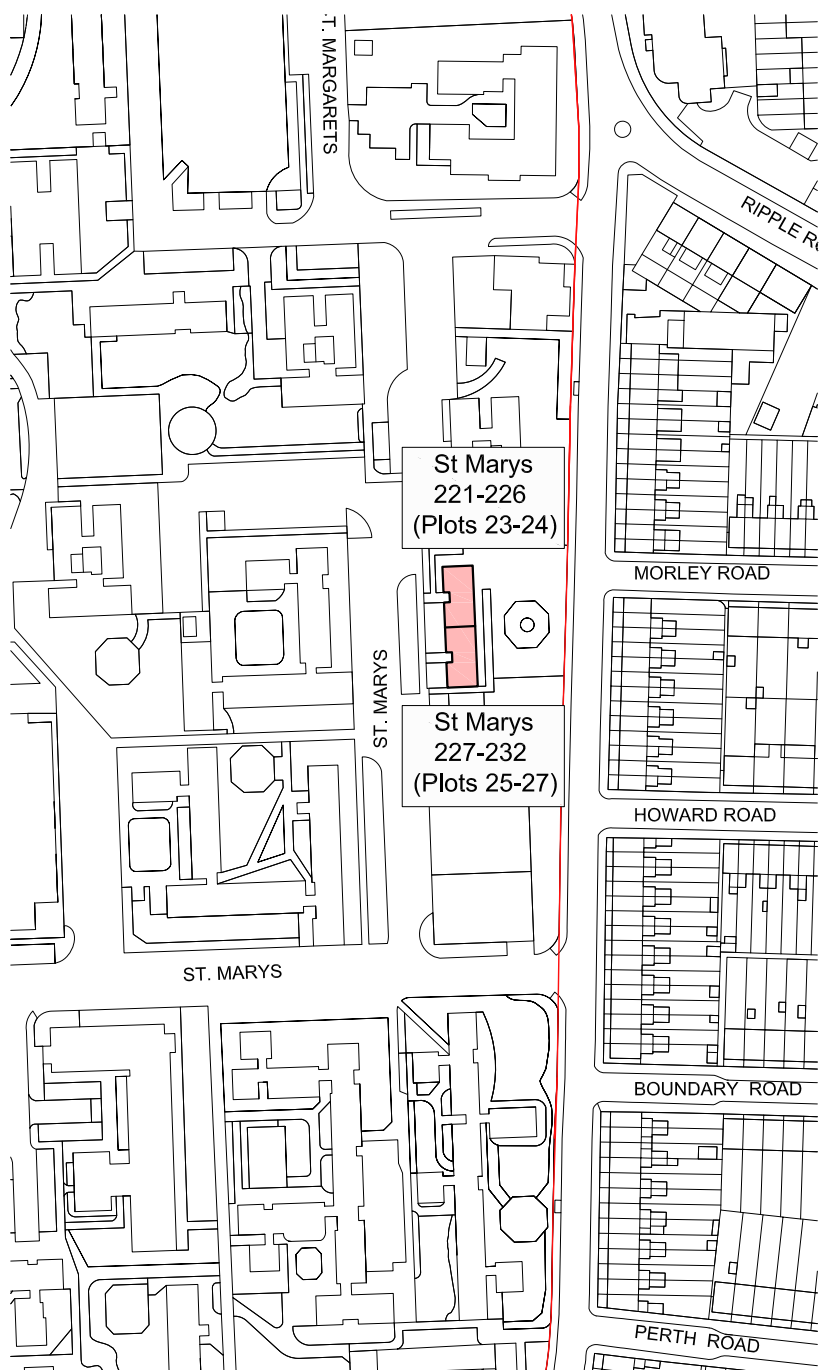
229 St Marys, First Floor



232 St Marys, Second Floor



location map



REV	DATE	DESCRIPTION	CKD
A	17.07.2015	DRAFT	
B	02.10.2015	FINAL	

Do not scale from this drawing.  
This map is reproduced from Ordnance Survey material with the permission of Ordnance Survey on behalf of the Controller of Her Majesty's Stationery Office © Crown copyright. Unauthorised reproduction infringes Crown copyright and may lead to prosecution or civil proceedings.  
100019280 (2015)

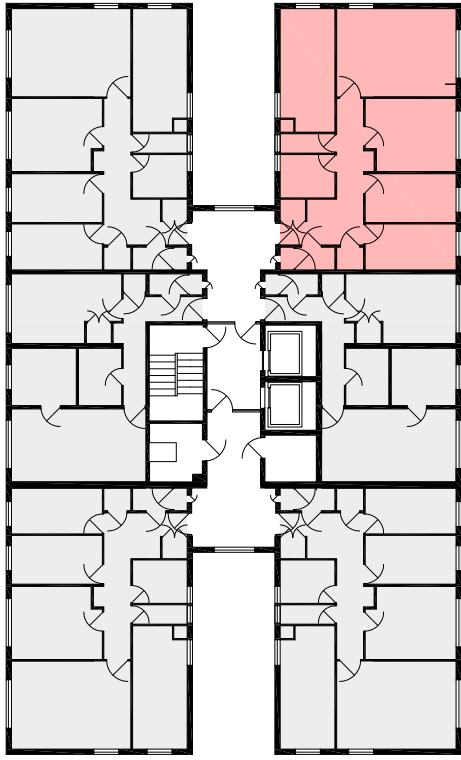
**KEY**  
 Proposed extent of the scheme  
 Location of Plots to be acquired



MAP REFERRED TO IN THE LONDON BOROUGH OF BARKING AND DAGENHAM (GASCOIGNE EAST PHASE 1 AND 2, BARKING) COMPULSORY PURCHASE ORDER 2015  
 CPO\_11\_SMS\_08

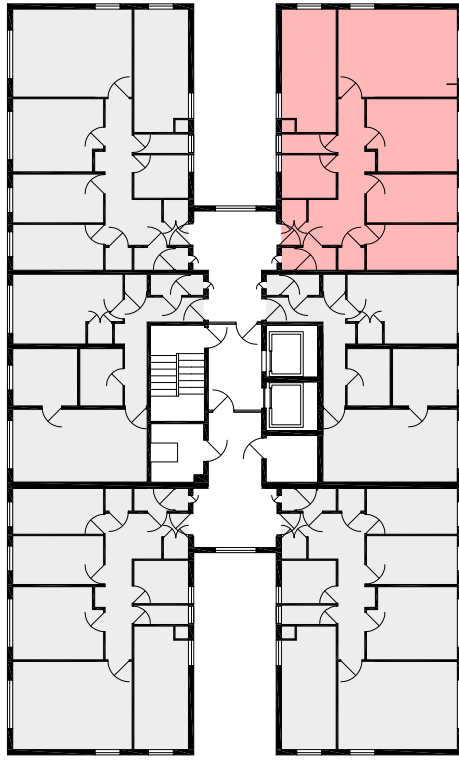
SCALE 1:300 @A3

9 Bamber House, 1st Floor



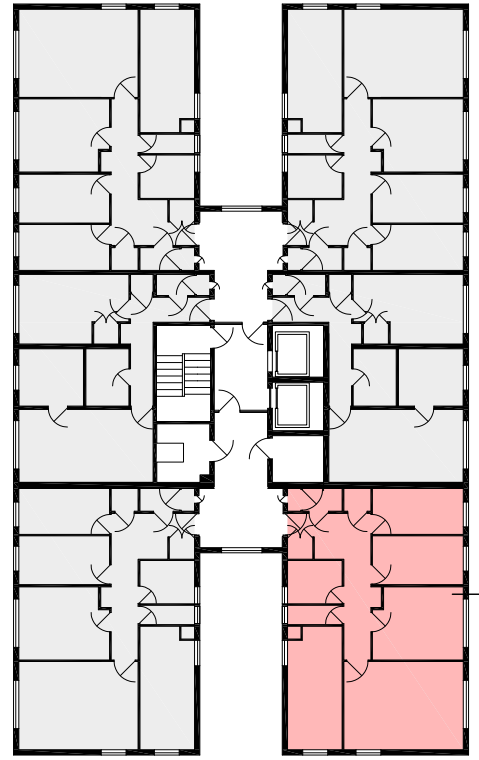
PLOT 28

27 Bamber House, 4th Floor



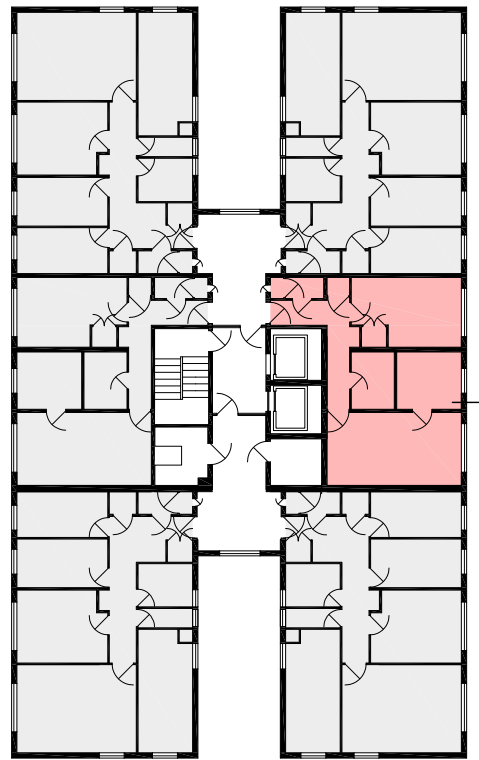
PLOT 29

35 Bamber House, 6th Floor



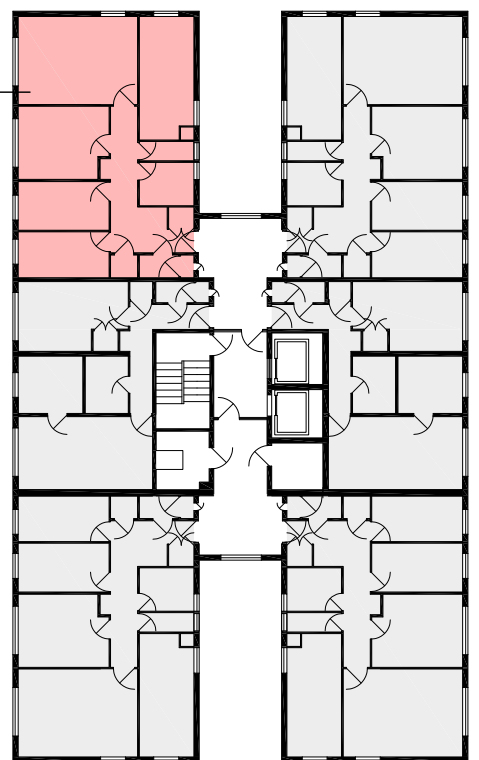
PLOT 30

52 Bamber House, 8th Floor



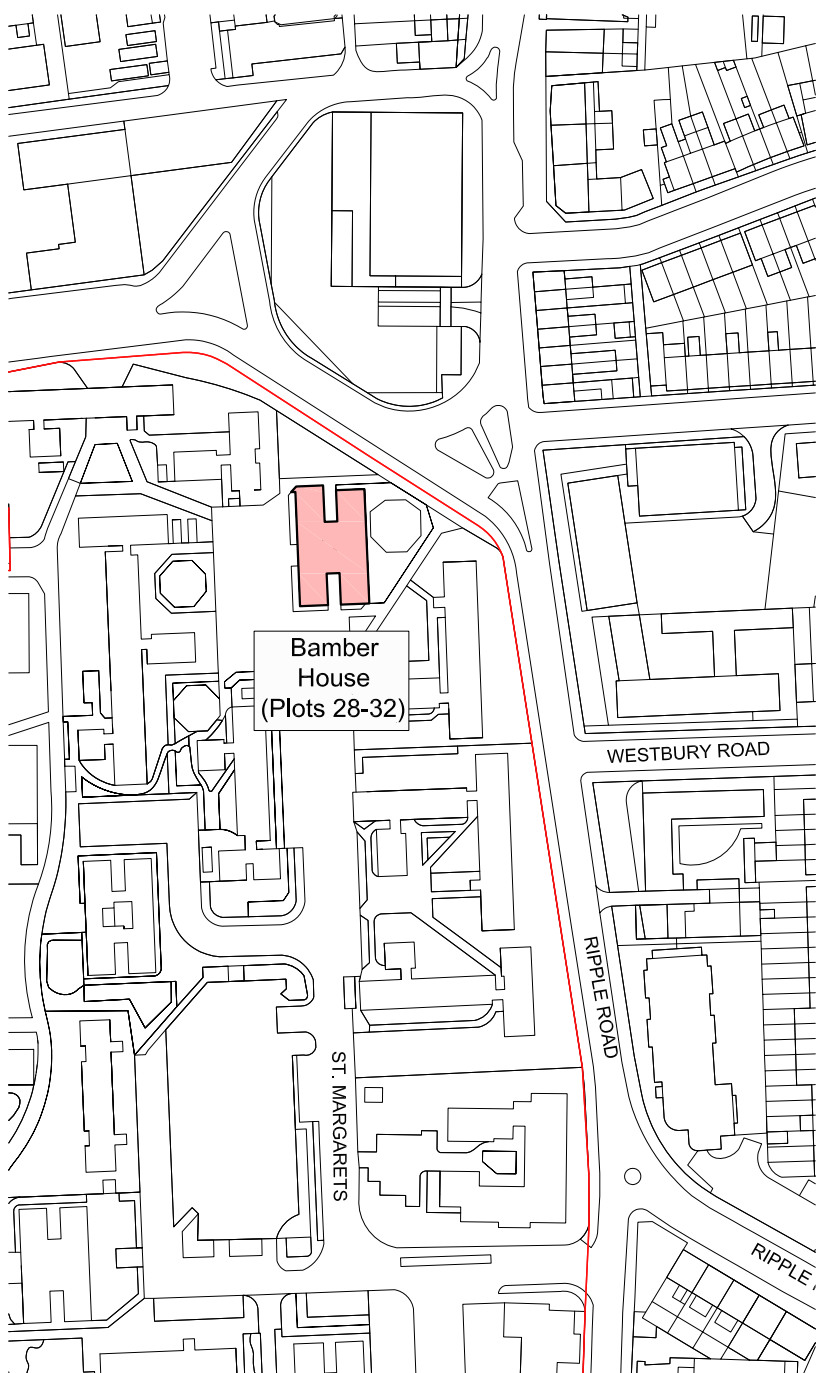
PLOT 31

56 Bamber House, 9th Floor



PLOT 32

location map



REV	DATE	DESCRIPTION	CKD
A	17.07.2015	DRAFT	
B	02.10.2015	FINAL	

Do not scale from this drawing.  
This map is reproduced from Ordnance Survey material with the permission of Ordnance Survey on behalf of the Controller of Her Majesty's Stationery Office © Crown copyright. Unauthorised reproduction infringes Crown copyright and may lead to prosecution or civil proceedings.  
100019280 (2015)

KEY

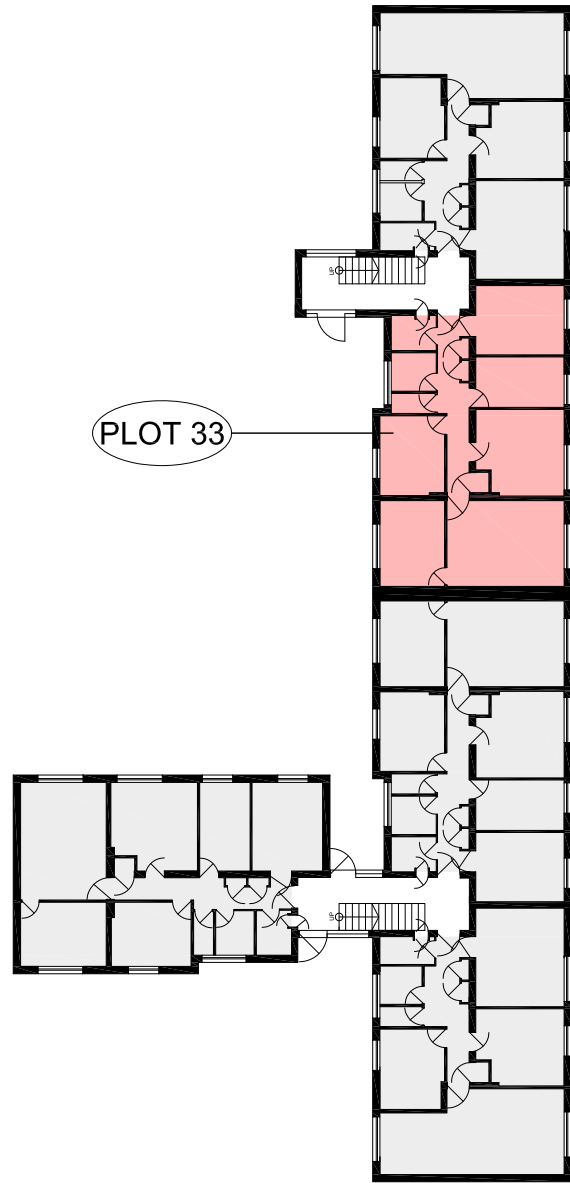
- Proposed extent of the scheme
- Location of Plots to be acquired



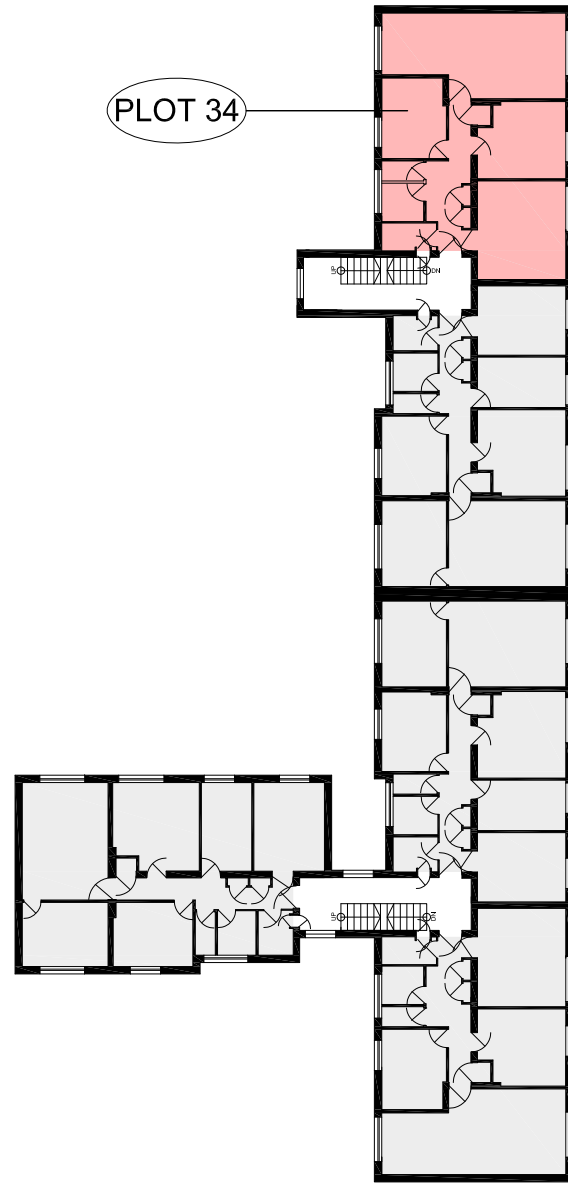
MAP REFERRED TO IN THE LONDON BOROUGH OF BARKING AND DAGENHAM (GASCOIGNE EAST PHASE 1 AND 2, BARKING) COMPULSORY PURCHASE ORDER 2015  
CPO\_12\_BMH\_01

SCALE 1:300 @A3

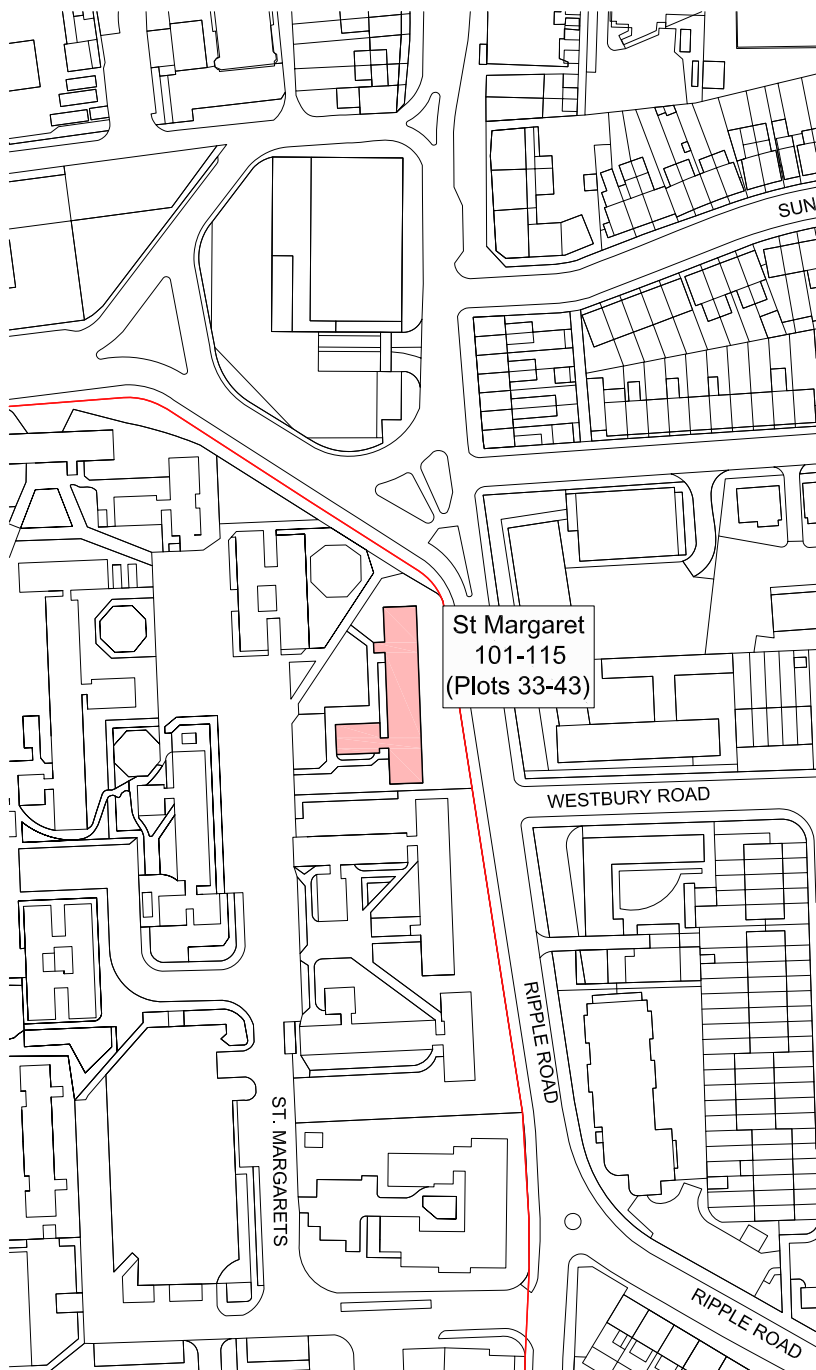
### 102 St. Margaret, Ground Floor



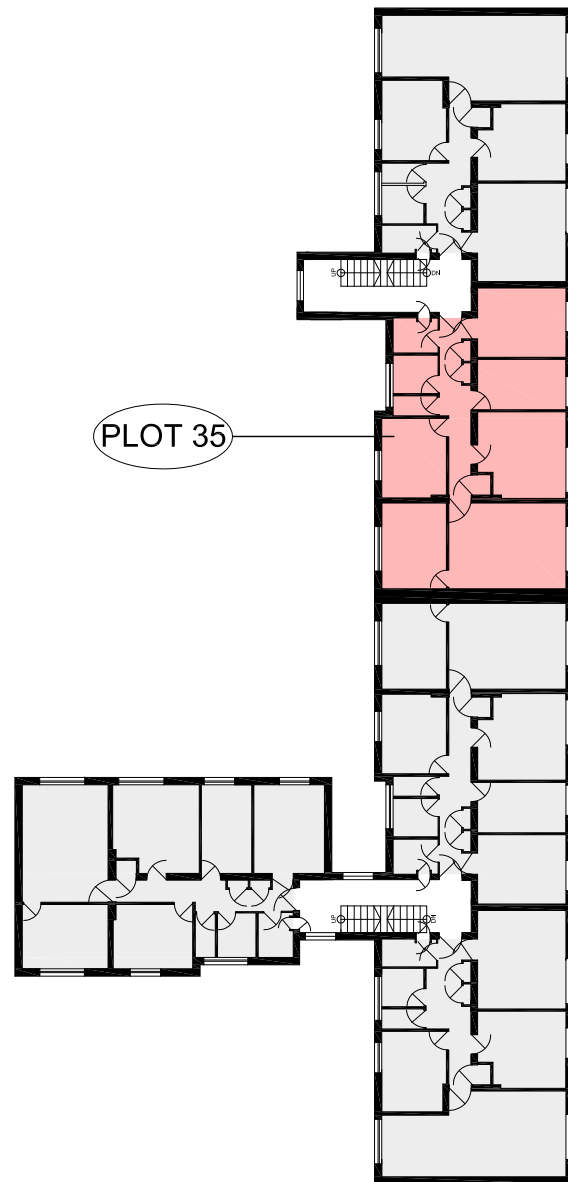
### 103 St. Margaret, First Floor



location map






### 104 St. Margaret, First Floor



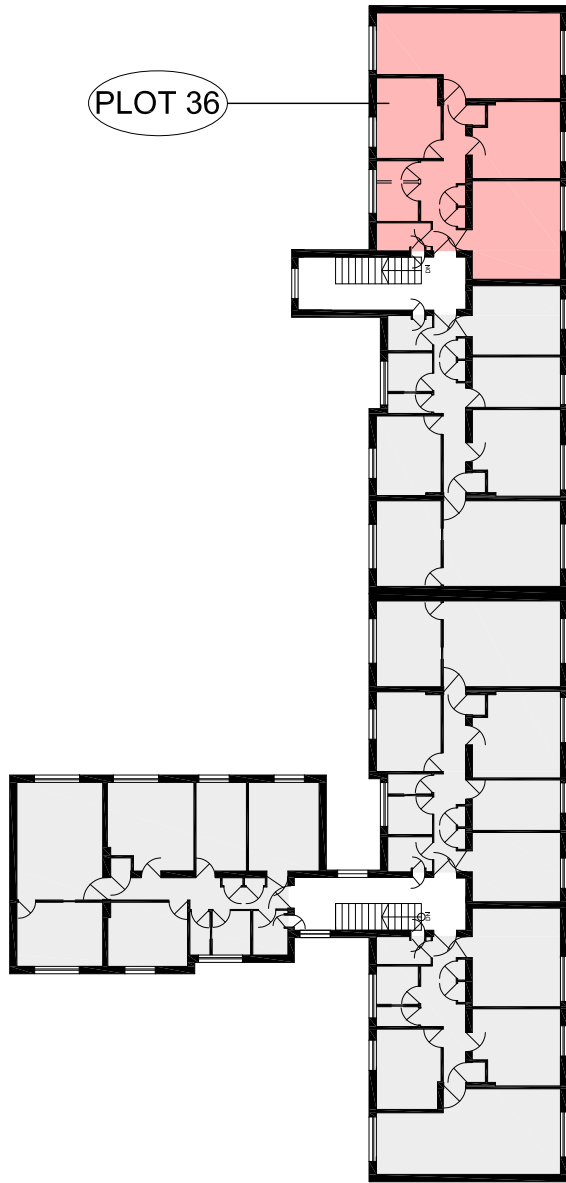
REV	DATE	DESCRIPTION	CHKD
A	17.07.2015	DRAFT	
B	02.10.2015	FINAL	

Do not scale from this drawing.  
This map is reproduced from Ordnance Survey material with the permission of Ordnance Survey on behalf of the Controller of Her Majesty's Stationery Office © Crown copyright. Unauthorised reproduction infringes Crown copyright and may lead to prosecution or civil proceedings.  
100019280 (2015)

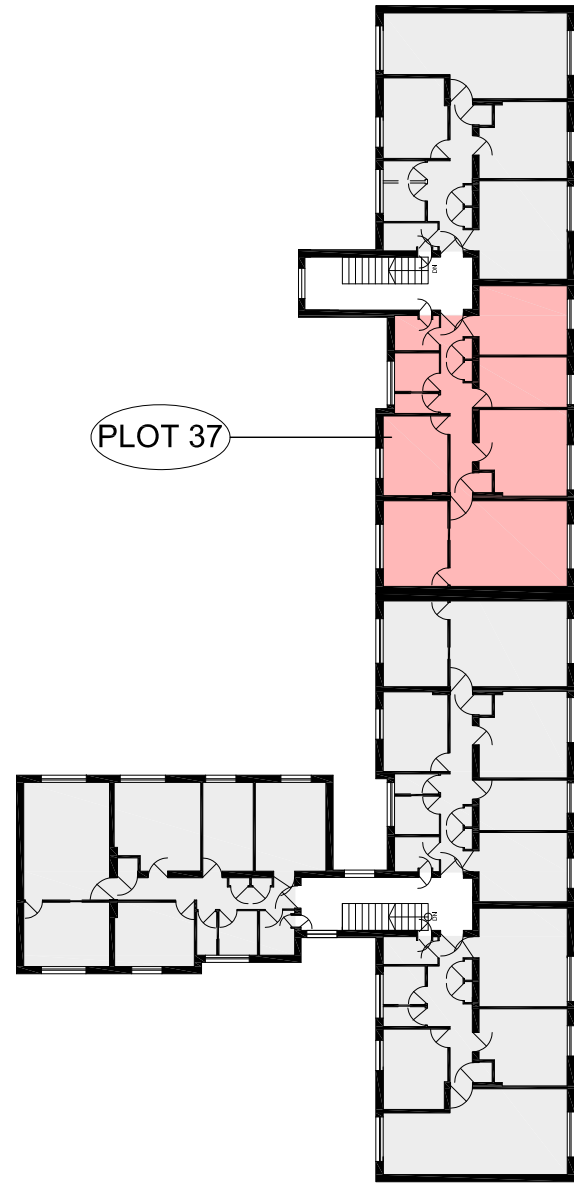
**KEY**  
 Proposed extent of the scheme  
 Location of Plots to be acquired

 MAP REFERRED TO IN THE LONDON BOROUGH OF BARKING AND DAGENHAM (GASCOIGNE EAST PHASE 1 AND 2, BARKING) COMPULSORY PURCHASE ORDER 2015  
 CPO\_13\_SMT\_01  
 SCALE 1:300 @A3

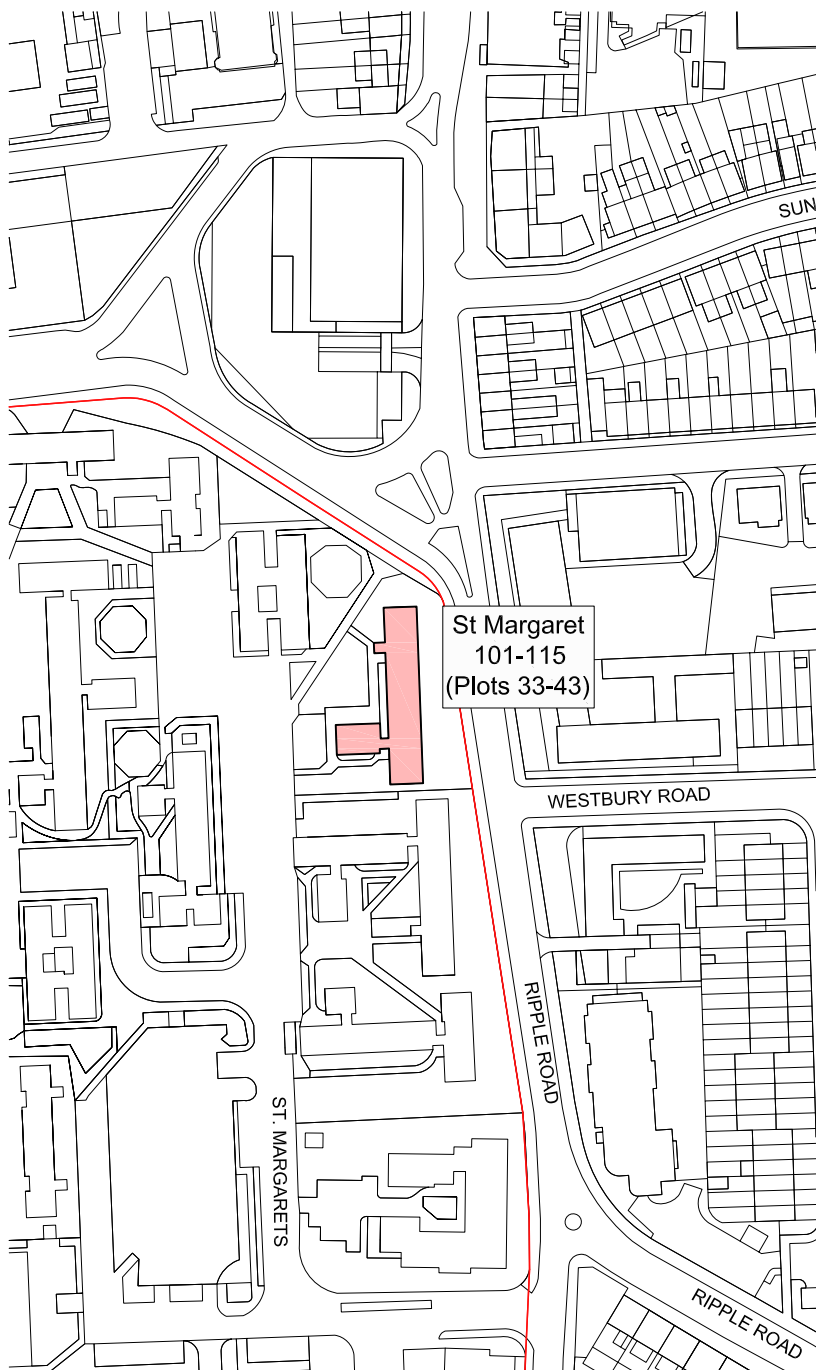
105 St. Margaret, Second Floor



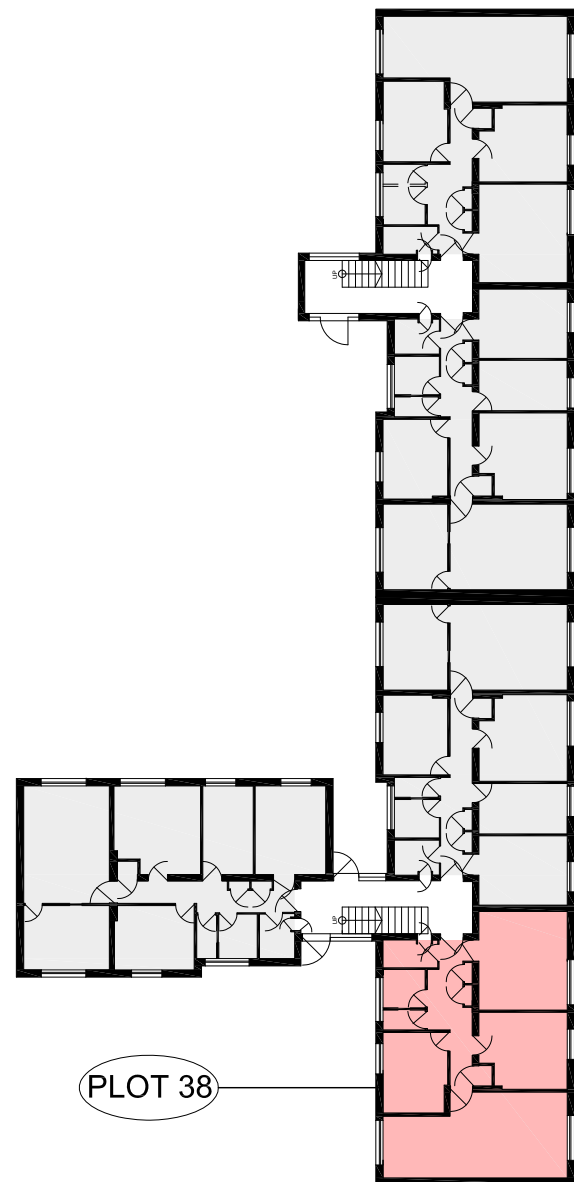
106 St. Margaret, Second Floor



location map






108 St. Margaret, Ground Floor



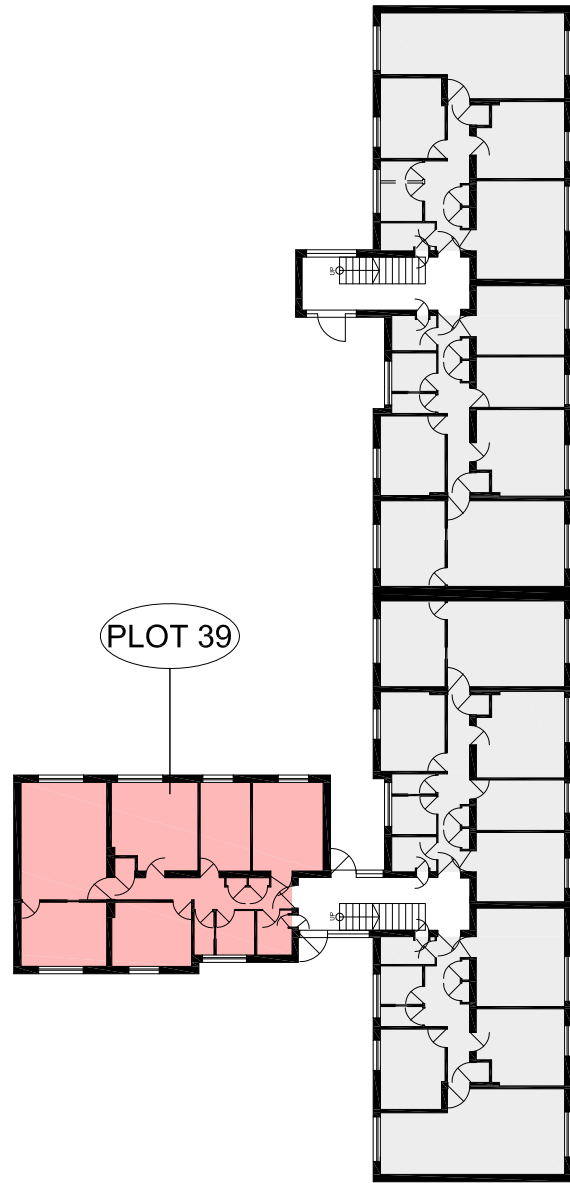
REV	DATE	DESCRIPTION	CHKD
A	17.07.2015	DRAFT	
B	02.10.2015	FINAL	

Do not scale from this drawing.  
 This map is reproduced from Ordnance Survey material with the permission of Ordnance Survey on behalf of the Controller of Her Majesty's Stationery Office © Crown copyright. Unauthorised reproduction infringes Crown copyright and may lead to prosecution or civil proceedings.  
 100019280 (2015)

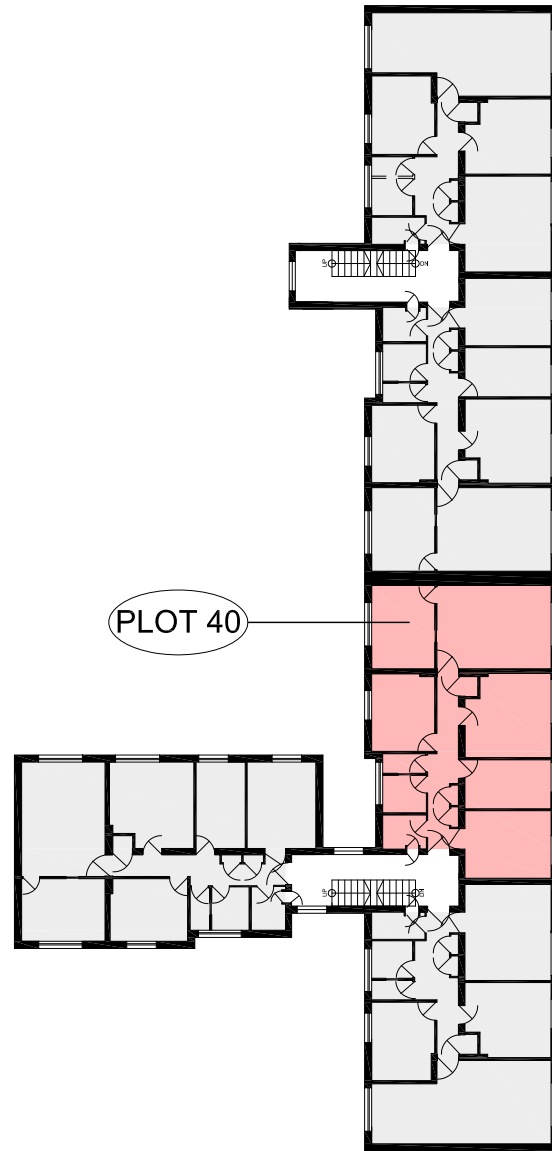
**KEY**  
 Proposed extent of the scheme  
 Location of Plots to be acquired

 MAP REFERRED TO IN THE LONDON BOROUGH OF BARKING AND DAGENHAM (GASCOIGNE EAST PHASE 1 AND 2, BARKING) COMPULSORY PURCHASE ORDER 2015  
 CPO\_14\_SMT\_02  
 SCALE 1:300 @A3

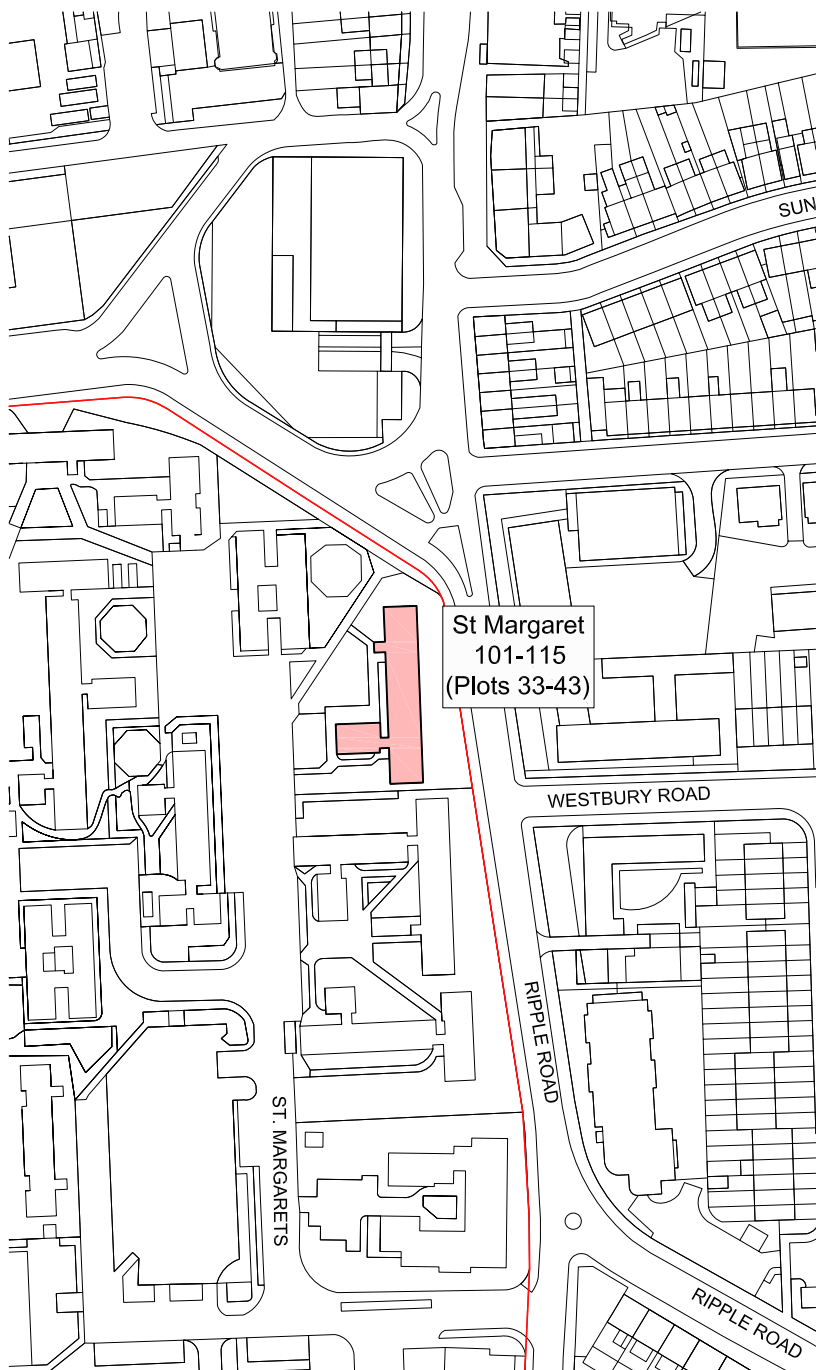
### 109 St. Margaret, Ground Floor



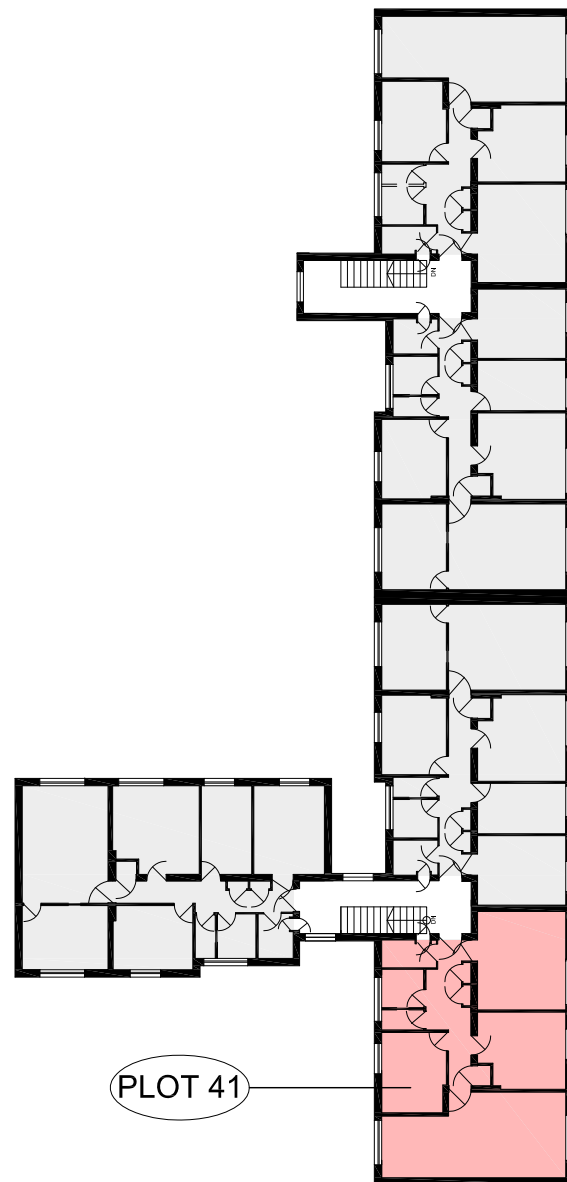
### 110 St. Margaret, First Floor



location map

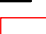




### 113 St. Margaret, Second Floor



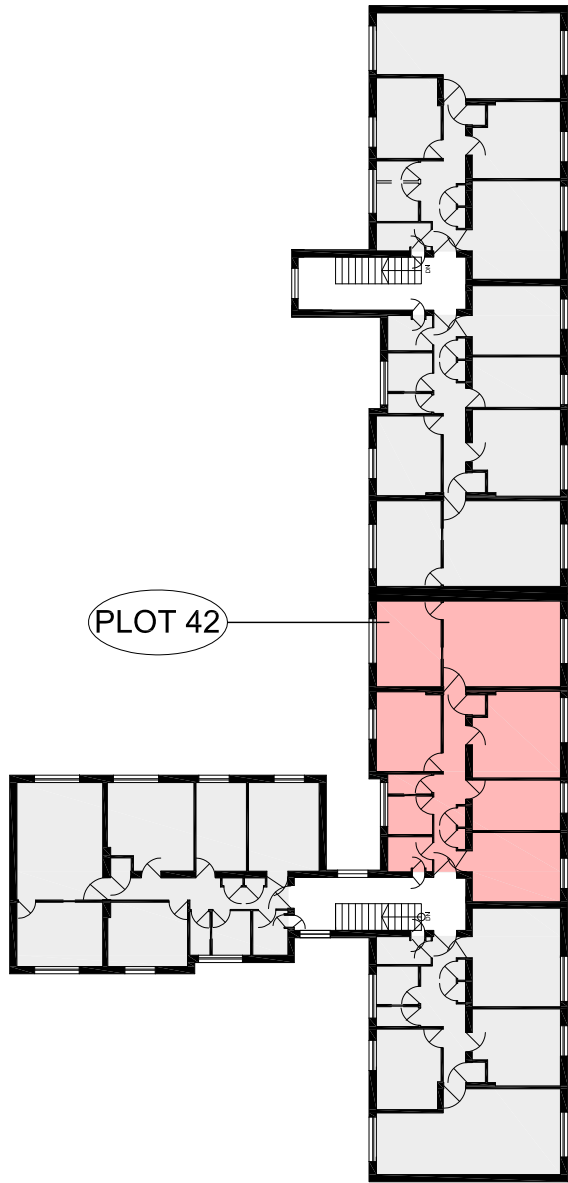
REV	DATE	DESCRIPTION	CHKD
A	17.07.2015	DRAFT	
B	02.10.2015	FINAL	

Do not scale from this drawing.  
 This map is reproduced from Ordnance Survey material with the permission of Ordnance Survey on behalf of the Controller of Her Majesty's Stationery Office © Crown copyright. Unauthorised reproduction infringes Crown copyright and may lead to prosecution or civil proceedings.  
 100019280 (2015)

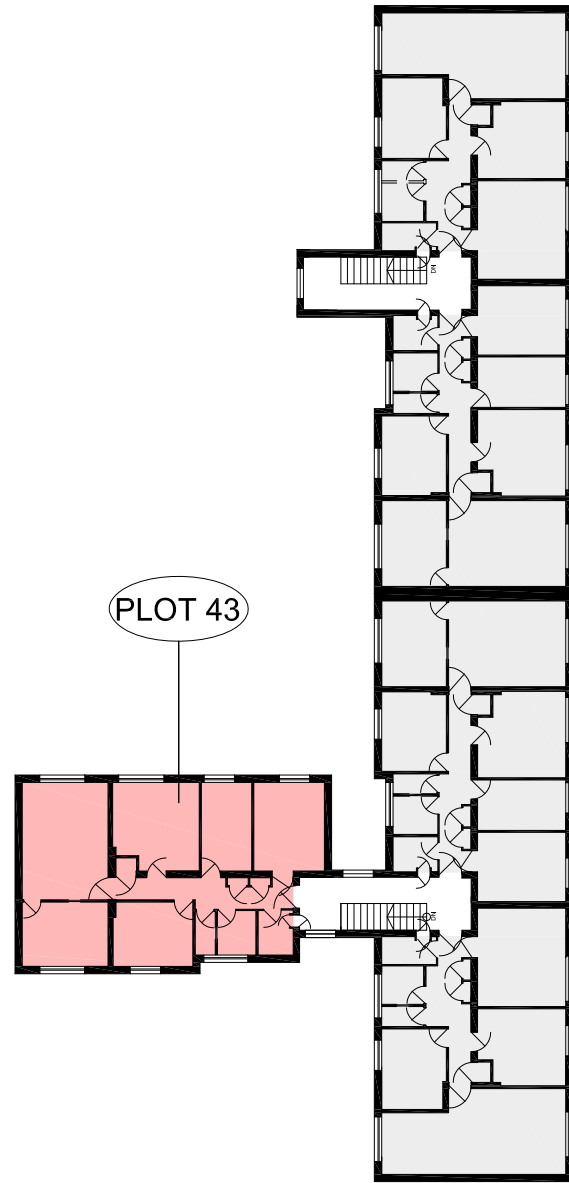
**KEY**  
 Proposed extent of the scheme  
 Location of Plots to be acquired

 MAP REFERRED TO IN THE LONDON BOROUGH OF BARKING AND DAGENHAM (GASCOIGNE EAST PHASE 1 AND 2, BARKING) COMPULSORY PURCHASE ORDER 2015  
 CPO\_15\_SMT\_03  
 SCALE 1:300 @A3

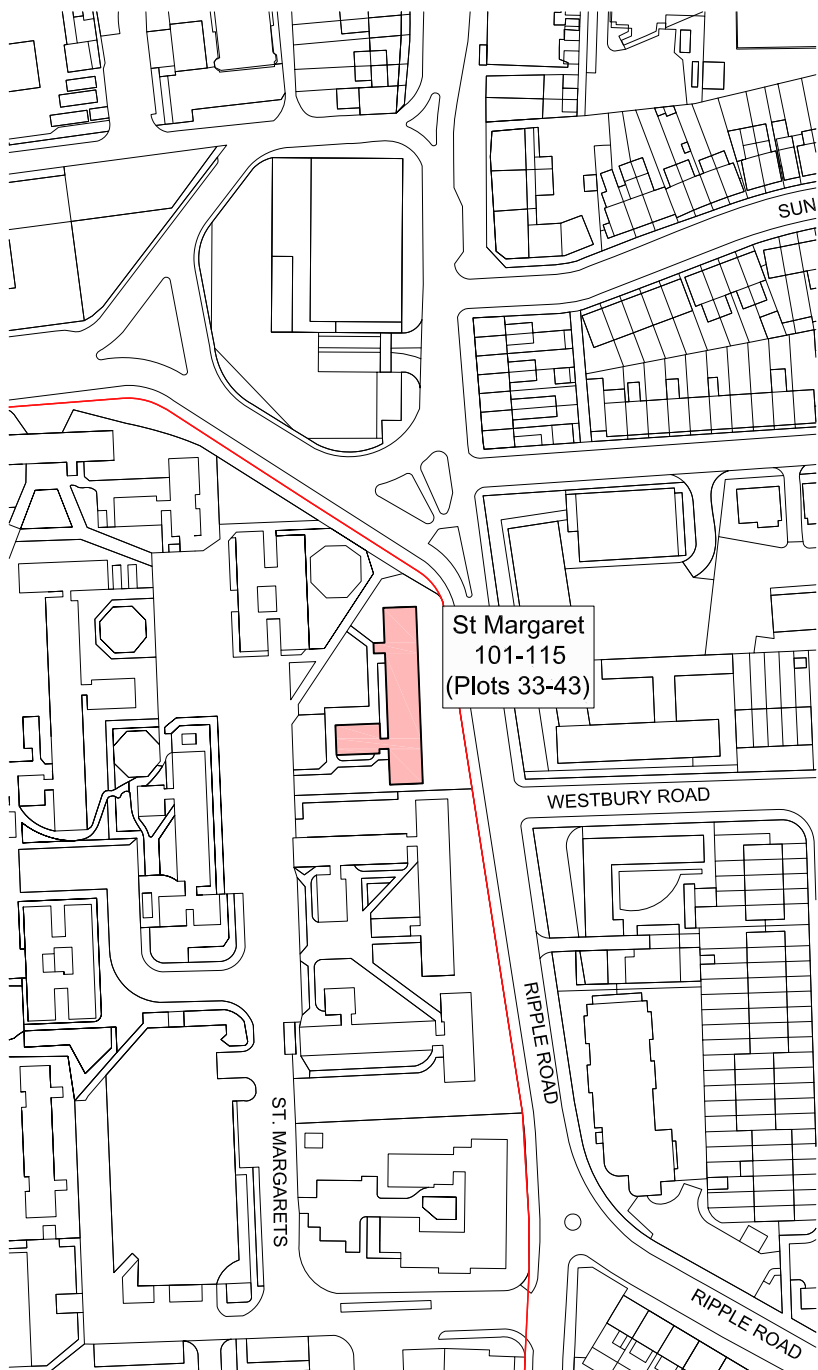
114 St. Margaret, Second Floor



115 St. Margaret, Second Floor





location map



St Margaret  
101-115  
(Plots 33-43)

REV	DATE	DESCRIPTION	CHKD
A	17.07.2015	DRAFT	
B	02.10.2015	FINAL	

Do not scale from this drawing.  
This map is reproduced from Ordnance Survey material with the permission of Ordnance Survey on behalf of the Controller of Her Majesty's Stationery Office © Crown copyright. Unauthorised reproduction infringes Crown copyright and may lead to prosecution or civil proceedings.  
100019280 (2015)

- KEY**
-  Proposed extent of the scheme
  -  Location of Plots to be acquired

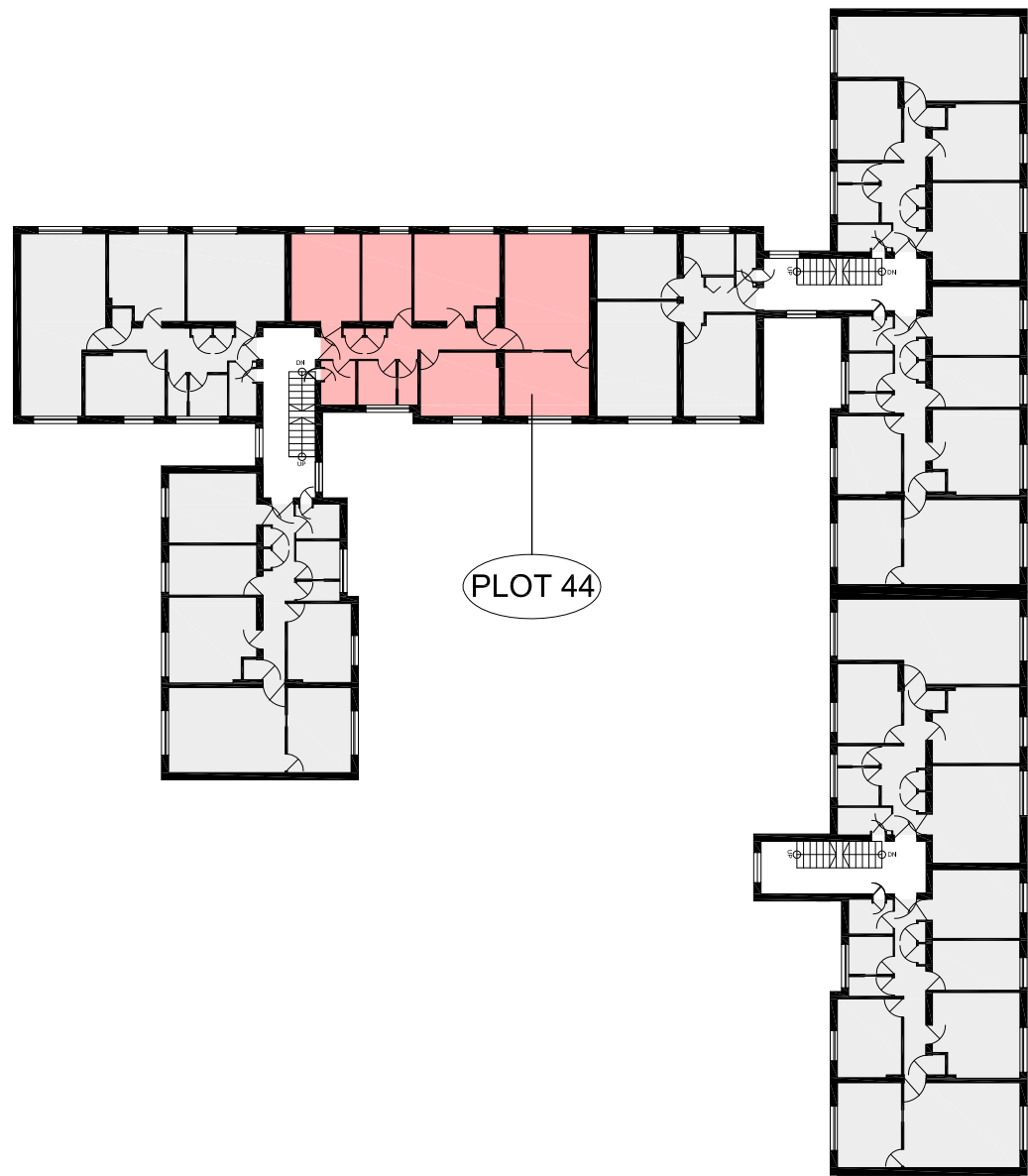


MAP REFERRED TO IN THE LONDON BOROUGH OF BARKING AND DAGENHAM (GASCOIGNE EAST PHASE 1 AND 2, BARKING) COMPULSORY PURCHASE ORDER 2015  
CPO\_16\_SMT\_04

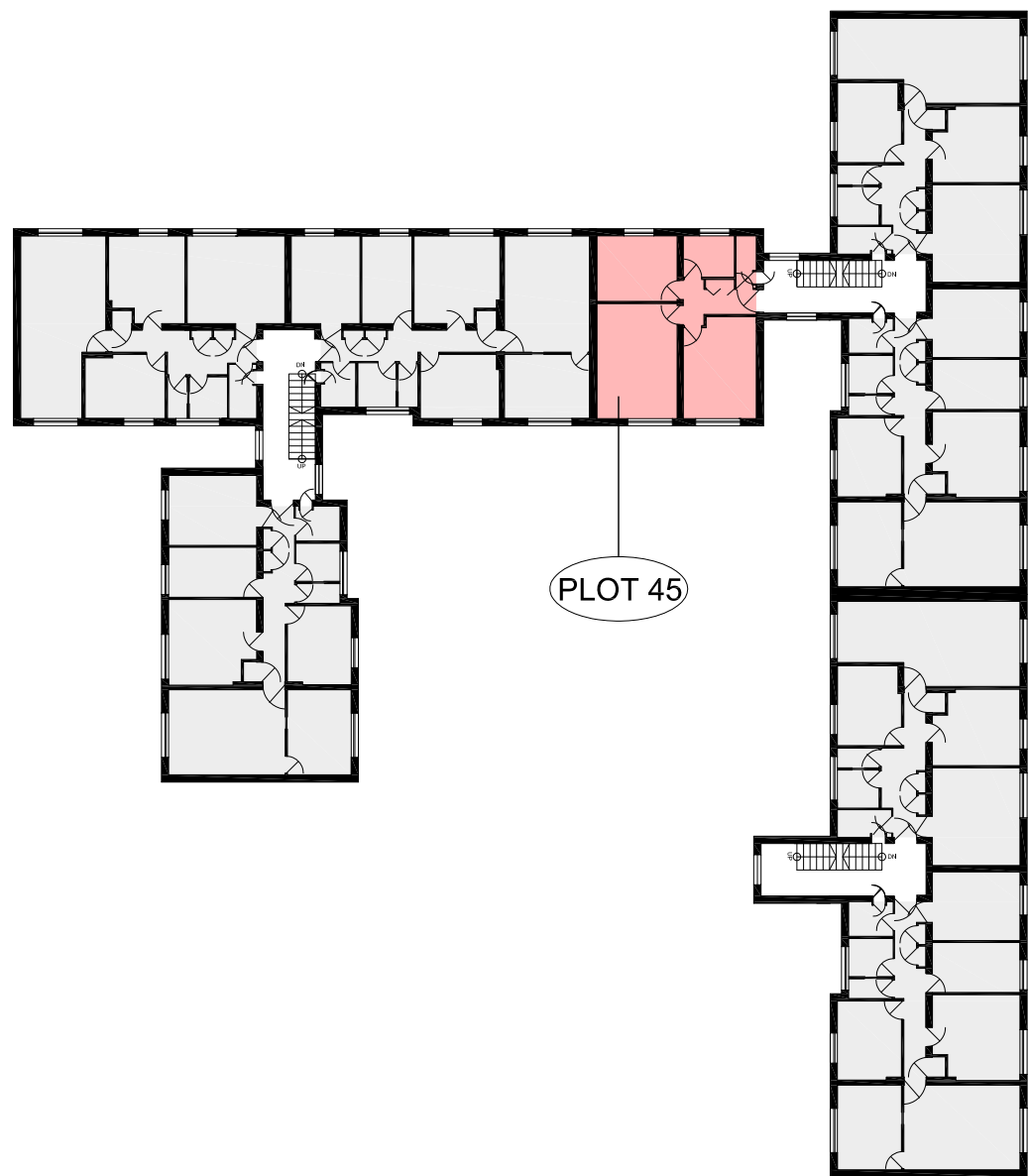
SCALE 1:300 @A3



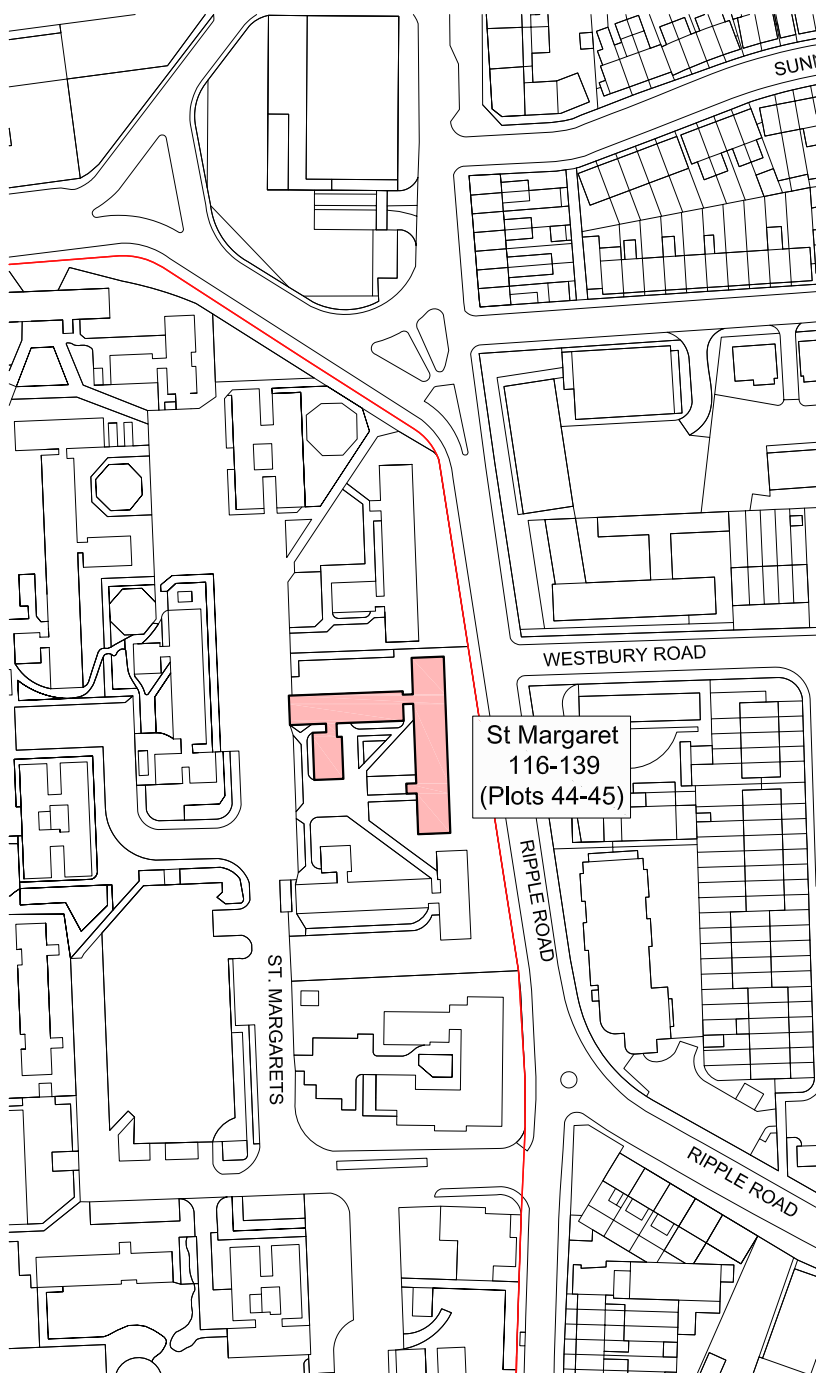
# 120 St. Margaret, First Floor



# 128 St. Margaret, First Floor






location map



REV	DATE	DESCRIPTION	CHKD
A	17.07.2015	DRAFT	
B	02.10.2015	FINAL	

Do not scale from this drawing.  
 This map is reproduced from Ordnance Survey material with the permission of Ordnance Survey on behalf of the Controller of Her Majesty's Stationery Office © Crown copyright. Unauthorised reproduction infringes Crown copyright and may lead to prosecution or civil proceedings.  
 100019280 (2015)

**KEY**  
 Proposed extent of the scheme  
 Location of Plots to be acquired

 MAP REFERRED TO IN THE LONDON BOROUGH OF BARKING AND DAGENHAM (GASCOIGNE EAST PHASE 1 AND 2, BARKING) COMPULSORY PURCHASE ORDER 2015  
 CPO\_17\_SMT\_05  
 SCALE 1:300 @A3