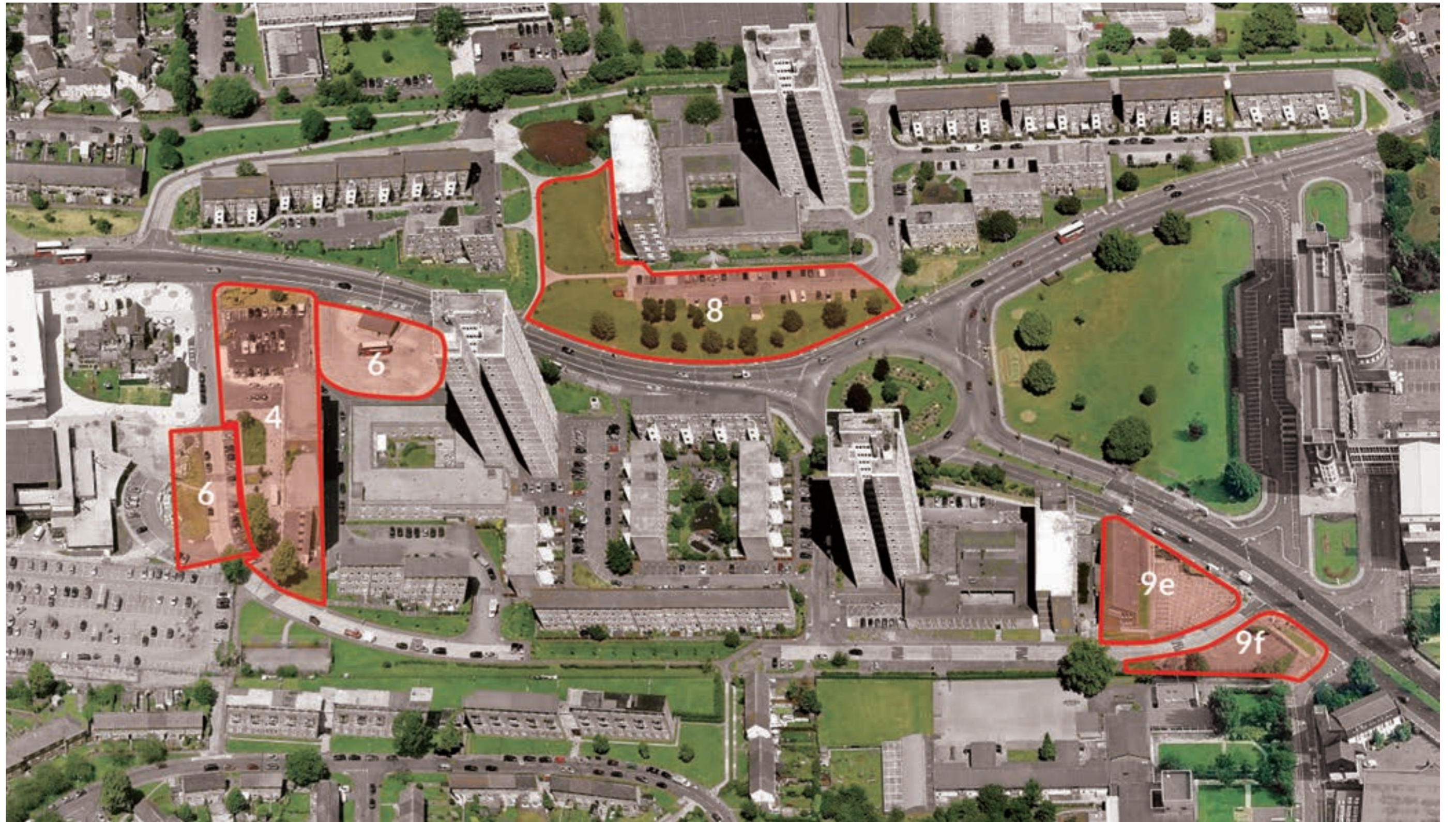


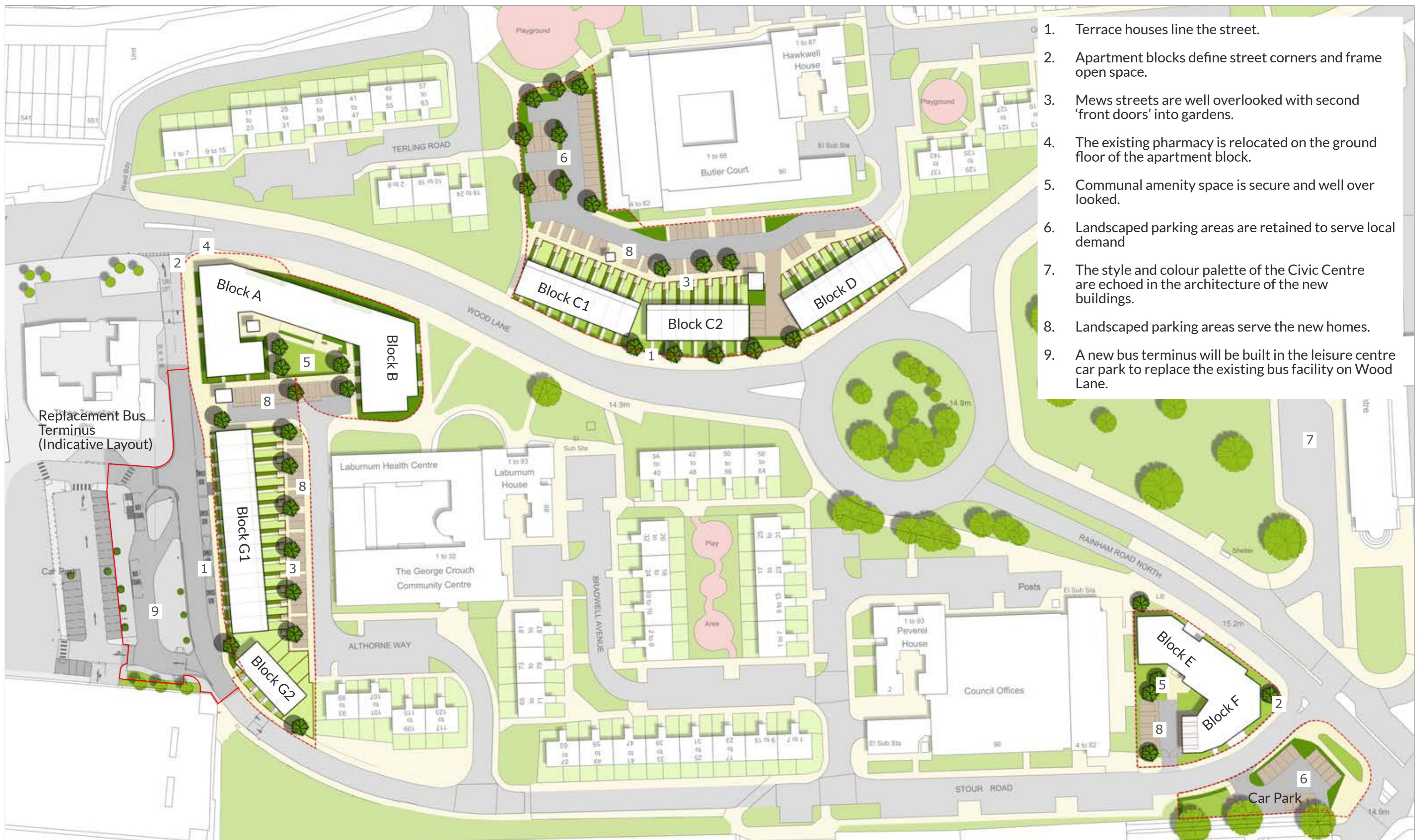
Becontree Heath Proposals

In September 2015, Barking and Dagenham Council appointed Countryside as the development partner to deliver the Becontree Heath masterplan - an ambitious housing scheme in Becontree Heath. The following exhibition presents initial design proposals for a new neighbourhood along and Althorne Way across several under-utilised sites.

Your ideas and feedback are very important to us. Please take a look at the material displayed on these boards and ask any questions. There is also a feedback form to fill in and return to the team with your comments. These comments will be taken into account as the designs are developed for planning approval.



Aerial view of the existing Becontree Heath area showing the sites.



Proposed landscaped masterplan

1. Terrace houses line the street.
2. Apartment blocks define street corners and frame open space.
3. Mews streets are well overlooked with second 'front doors' into gardens.
4. The existing pharmacy is relocated on the ground floor of the apartment block.
5. Communal amenity space is secure and well overlooked.
6. Landscaped parking areas are retained to serve local demand
7. The style and colour palette of the Civic Centre are echoed in the architecture of the new buildings.
8. Landscaped parking areas serve the new homes.
9. A new bus terminus will be built in the leisure centre car park to replace the existing bus facility on Wood Lane.

If you need any further information please contact:

Sheean McKeever - Development Manager at Countryside	Phone: 01277 237 952	Email: Sheean.McKeever@cpplc.com
Mahub Khandoker - Associate Director at Countryside	Phone: 01277 237 951	Email: Mahub.Khandoker@cpplc.com
Angela Wint - Senior Project Manager at Newlon (affordable housing provider)	Phone: 020 7613 6897	Email: Angela.Wint@newlon.org.uk
Alex Jeremy - Regeneration Officer at LBBD	Phone: 020 8227 5243	Email: Alex.Jeremy@lbdd.gov.uk