

Did you know Alibon has...

10,000

residents

12th highest in the borough



2,400

under 16s



3rd lowest proportion
in the borough

6,600

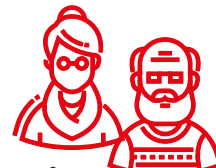
16s to 64s



4th highest proportion
in the borough

900

65 and over



9th highest proportion
in the borough

35

average age



Older than the
borough average (33)

61.1%

deprived
households



Lower than the borough
average (62.4%)

45.6

average attainment
8 score per pupil (GCSE)



Lowest in the borough

24.3%

adults with no
qualifications



Higher than the borough
average (22.7%)

9.9%

open space



2nd lowest in the borough

68

births per 1,000
women of childbearing age



Higher than the borough
average (64.2)

93.7

crimes per
1,000 people



Lower than the
borough average (111.4)

13.6

domestic abuse
offences per 1,000 people



Lower than the borough
average (16.2)

£350,300

median house
price (all types)



Higher than the
borough average (£345,000)

6.2%

unemployment
related benefits claimants



Higher than the borough
average (6%)

£30,512

median
household income



Higher than the borough
average (£29,259)

8.7%

UC
Universal Credit
claimants in employment



Higher than the borough
average (8.6%)

61.2%

non-White British
population



Lower than the borough
average (69.1%)

10.3%

obesity amongst
children in Reception



2nd highest in the borough

2.7%

NEET and
Not Known



Lower than the borough
average (2.9%)

Barking & Dagenham

Sources (Ward infographic)

Office for National Statistics 2021 Census (Population, Age, non-White British population, Adult qualifications, deprived households)

Office for National Statistics 2021 (Births)

Greenspace info for Greater London 2021 (Open space)

Office for National Statistics year ending March 2022 (Average house price)

CACI paycheck 2021 (Median household income)

Department for Work and Pensions August 2022 (Unemployment related benefits claimants)

Department for Work and Pensions October 2022 (Universal Credit claimants who are in employment)

Department for Education Summer 2022 (GCSE)

Metropolitan Police Service 2022 (Crimes, Domestic abuse)

National Child Measurement Programme 2021/22 (Obesity amongst children in Reception)

15billionebp management information service December 2022 (NEET and Not Known)