

## Did you know Becontree has...

**9,800**  
residents

6th lowest in the borough



**2,600**  
under 16s

6th highest proportion  
in the borough



**6,300**  
16s to 64s

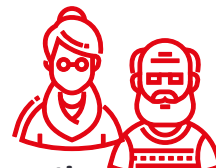
5th lowest proportion  
in the borough



**900**

65 and over

11th highest proportion  
in the borough



**34**  
average age

Older than the borough  
average (33)



**63.7%**  
deprived  
households

Higher than the borough  
average (62.4%)



**48.4**

average attainment  
8 score per pupil (GCSE)

Lower than the borough  
average (49.2)



**24.1%**  
adults with no  
qualifications

Higher than the borough  
average (22.7%)



**1.5%**  
open space

Lowest in the borough



**56.4**

births per 1,000  
women of childbearing age

2nd lowest in the borough



**80.7**  
crimes per  
1,000 people

Lower than the  
borough average (111.4)



**14.8**  
domestic abuse  
offences per 1,000 people

Lower than the borough  
average (16.2)



**£341,800**  
median house  
price (all types)

Lower than the  
borough average (£345,000)



**7%**  
unemployment  
related benefits claimants  
Higher than the borough  
average (6%)



**£30,271**  
median  
household income  
Higher than the borough  
average (£29,259)



**8.1%**  
Universal Credit  
claimants in employment  
Lower than the borough  
average (8.6%)



**70%**  
non-White British  
population  
Higher than the borough  
average (69.1%)



**6.8%**  
obesity amongst  
children in Reception  
Lower than the borough  
average (7.6%)



**1.2%**  
NEET and  
Not Known

Lowest in the borough



**Barking &  
Dagenham**

## Sources (Ward infographic)

**Office for National Statistics 2021 Census** (Population, Age, non-White British population, Adult qualifications, deprived households)

**Office for National Statistics 2021** (Births)

**Greenspace info for Greater London 2021** (Open space)

**Office for National Statistics year ending March 2022** (Average house price)

**CACI paycheck 2021** (Median household income)

**Department for Work and Pensions August 2022** (Unemployment related benefits claimants)

**Department for Work and Pensions October 2022** (Universal Credit claimants who are in employment)

**Department for Education Summer 2022** (GCSE)

**Metropolitan Police Service 2022** (Crimes, Domestic abuse)

**National Child Measurement Programme 2021/22** (Obesity amongst children in Reception)

**15billionebp management information service December 2022** (NEET and Not Known)