

Did you know
Barking Riverside
has...

10,057

residents

8th lowest in the borough



3,090

under 16s

Highest proportion
in the borough



6,632

16s to 64s

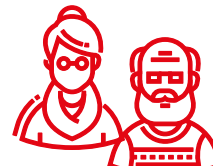
8th highest proportion
in the borough



335

65 and over

Lowest proportion
in the borough



29

average age

Youngest in the borough



52.8%

deprived
households

Lowest in the borough



51.1

average attainment
8 score per pupil (GCSE)

Higher than the borough
average (47.9)



15.9%

adults with no
qualifications

Lowest in the borough



49.6%

open space

3rd highest proportion
in the borough



82.7

births per 1,000
women of childbearing age

Highest in the borough



146.4

crimes per
1,000 people

3rd highest in the borough



15.5

domestic abuse
offences per 1,000 people

Lower than the borough
average (17)



£324,333

median house
price (all types)

Lower than the
borough average (£380,000)



5.4%

unemployment
related benefits claimants

2nd lowest in the borough



£36,529

median
household income

Lower than the borough
average (£38,391)



9.1%

Universal Credit
claimants in employment
Lower than the borough
average (9.5%)



80.6%

Black, Asian and
Multi-Ethnic population

Higher than the borough
average (69.1%)



14.7%

obesity amongst
children in Reception

Higher than the borough
average (12.7%)



3.1%

NEET and
Not Known

Lower than the borough
average (3.6%)



**Barking &
Dagenham**

Sources (Ward infographic)

Office for National Statistics 2022 mid-year population estimates (Population, age)

Office for National Statistics 2021 Census (Ethnicity, adult qualifications, deprived households)

Office for National Statistics 2021 (Births)

Greenspace info for Greater London 2023 (Open space)

Office for National Statistics year ending March 2023 (Average house price)

CACI paycheck 2023 (Median household income)

Department for Work and Pensions December 2023 (Unemployment related benefits claimants, Universal Credit claimants who are in employment)

Department for Education Summer 2023 (GCSE)

Metropolitan Police Service 2023 (Crimes, domestic abuse)

National Child Measurement Programme 2022-23 (Obesity amongst children in Reception)

15billionebp management information service December 2023 (NEET and Not Known)