

Did you know
Becontree has...

9,880

residents

7th lowest in the borough



2,615

under 16s

7th highest proportion
in the borough



6,408

16s to 64s

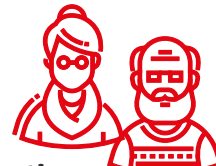
10th highest proportion
in the borough



857

65 and over

8th lowest proportion
in the borough



34

average age

Same as the borough average



63.7%

deprived
households

Higher than the borough
average (62.4%)



47.2

average attainment
8 score per pupil (GCSE)

Lower than the borough
average (47.9)



24.1%

adults with no
qualifications

Higher than the borough
average (22.7%)



1.5%

open space

Lowest in the borough



56.4

births per 1,000
women of childbearing age

2nd lowest in the borough



83.9

crimes per
1,000 people

Lower than the
borough average (115.8)



15.9

domestic abuse
offences per 1,000 people

Lower than the borough
average (17)



£395,339

median house
price (all types)

Higher than the
borough average (£380,000)



6.4%

unemployment
related benefits claimants

Lower than the borough
average (6.7%)



£39,949

median
household income

Higher than the borough
average (£38,391)



7.5%

Universal Credit
claimants in employment
Lower than the borough
average (9.5%)

UC

70%

Black, Asian and
Multi-Ethnic population

Higher than the borough
average (69.1%)



14.9%

obesity amongst
children in Reception

Higher than the borough
average (12.7%)



3.6%

NEET and
Not Known

Same as the borough average



**Barking &
Dagenham**

Sources (Ward infographic)

- Office for National Statistics 2022 mid-year population estimates** (Population, age)
- Office for National Statistics 2021 Census** (Ethnicity, adult qualifications, deprived households)
- Office for National Statistics 2021** (Births)
- Greenspace info for Greater London 2023** (Open space)
- Office for National Statistics year ending March 2023** (Average house price)
- CACI paycheck 2023** (Median household income)
- Department for Work and Pensions December 2023** (Unemployment related benefits claimants, Universal Credit claimants who are in employment)
- Department for Education Summer 2023** (GCSE)
- Metropolitan Police Service 2023** (Crimes, domestic abuse)
- National Child Measurement Programme 2022-23** (Obesity amongst children in Reception)
- 15billionebp management information service December 2023** (NEET and Not Known)