

## Did you know Northbury has...

# 13,082

residents

9th highest in the borough



## 3,376

under 16s



10th highest proportion  
in the borough

## 9,039

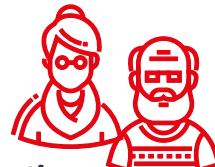
16s to 64s



2nd highest proportion  
in the borough

## 667

65 and over



4th lowest proportion  
in the borough

## 32

average age



Younger than the  
borough average (34)

## 64.1%

deprived  
households



Higher than the borough  
average (62.4%)

## 47.5

average attainment

8 score per pupil (GCSE)

Lower than the borough  
average (47.9)



## 21.1%

adults with no  
qualifications



Lower than the borough  
average (22.7%)

## 20.8%

open space



Lower than the borough  
average (26.6%)

## 79.7

births per 1,000  
women of childbearing age



2nd highest in the borough

## 159.5

crimes per  
1,000 people



2nd highest in the borough

## 18.6

domestic abuse  
offences per 1,000 people



Higher than the borough  
average (17)

## £244,500

median house  
price (all types)



Lowest in the borough

## 7.8%

unemployment  
related benefits claimants



Higher than the borough  
average (6.7%)

## £35,936

median  
household income



Lower than the borough  
average (£38,391)

## 11%

Universal Credit  
claimants in employment

# UC

Higher than the borough  
average (9.5%)

## 87.5%

Black, Asian and  
Multi-Ethnic population



2nd highest in the borough

## 13.8%

obesity amongst  
children in Reception



Higher than the borough  
average (12.7%)

## 4.8%

NEET and  
Not Known



Higher than the borough  
average (3.6%)

# Barking & Dagenham

## Sources (Ward infographic)

- Office for National Statistics 2022 mid-year population estimates** (Population, age)
- Office for National Statistics 2021 Census** (Ethnicity, adult qualifications, deprived households)
- Office for National Statistics 2021** (Births)
- Greenspace info for Greater London 2023** (Open space)
- Office for National Statistics year ending March 2023** (Average house price)
- CACI paycheck 2023** (Median household income)
- Department for Work and Pensions December 2023** (Unemployment related benefits claimants, Universal Credit claimants who are in employment)
- Department for Education Summer 2023** (GCSE)
- Metropolitan Police Service 2023** (Crimes, domestic abuse)
- National Child Measurement Programme 2022-23** (Obesity amongst children in Reception)
- 15billionebp management information service December 2023** (NEET and Not Known)