

Did you know
Barking Riverside
has...

10,052
residents
8th lowest in the borough



3,076
under 16s



Highest proportion
in the borough

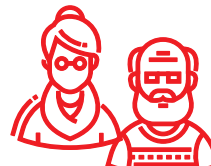
6,644
16s to 64s



8th highest proportion
in the borough

332

65 and over



Lowest proportion
in the borough

29
average age



Youngest in the borough

52.8%
deprived
households



Lowest in the borough

48.1

average attainment
8 score per pupil (GCSE)



Higher than the borough
average (47.2)

15.9%
adults with no
qualifications



Lowest in the borough

49.6%
open space



3rd highest proportion
in the borough

78.2

births per 1,000
women of childbearing age



2nd highest in the borough

109.8
crimes per
1,000 people



3rd highest in the borough

17.9
domestic abuse
offences per 1,000 people
Higher than the borough
average (14.9)



£325,333
median house
price (all types)



Lower than the
borough average (£370,000)

6.4%
unemployment
related benefits claimants



2nd lowest in the borough

£42,473
median
household income
Lower than the borough
average (£43,614)



9.9% **UC**
Universal Credit
claimants in employment
Lower than the borough
average (10.1%)

80.6%
Black, Asian and
Multi-Ethnic population
Higher than the borough
average (69.1%)



32.4%
obesity amongst
children in Year 6
Higher than the borough
average (29.3%)



3.3%
NEET and
Not Known
Lower than the borough
average (3.9%)



**Barking &
Dagenham**

Sources (Ward infographic)

Office for National Statistics 2022 mid-year population estimates (Population, age)

Office for National Statistics 2021 Census (Ethnicity, adult qualifications, deprived households)

Office for National Statistics 2023 (Births)

Greenspace info for Greater London 2023 (Open space)

Office for National Statistics year ending March 2024 (Average house price)

CACI paycheck 2024 (Median household income)

Department for Work and Pensions September 2024 (Unemployment related benefits claimants, Universal Credit claimants who are in employment)

Department for Education Summer 2024 (GCSE)

Metropolitan Police Service January 2024 to December 2024 (Crimes, domestic abuse)

National Child Measurement Programme 2023-24 (Obesity amongst children in Year 6)

15billionebp management information service June 2024 (NEET and Not Known)