

Did you know Whalebone has...

13,815
residents

6th highest in the borough



3,742
under 16s



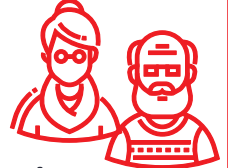
5th highest proportion
in the borough

8,950
16s to 64s



12th highest proportion
in the borough

1,123
65 and over



7th lowest proportion
in the borough

33
average age



Lower than the borough
average (34)

54.9%
deprived
households



2nd lowest in the borough

49

average attainment
8 score per pupil (GCSE)
Higher than the borough
average (47.2)



20.6%
adults with no
qualifications



Lower than the borough
average (22.7%)

10.2%
open space



Lower than the borough
average (26.6%)

67.8

births per 1,000
women of childbearing age
Higher than the borough
average (66.7)



75.1
crimes per
1,000 people
Lower than the borough
average (90.4)



12.5
domestic abuse
offences per 1,000 people
Lower than the borough
average (14.9)



£396,833
median house
price (all types)
Higher than the
borough average (£370,000)



7.2%
unemployment
related benefits claimants
Lower than the borough
average (8%)



£49,288
median
household income



2nd highest in the borough

9%
Universal Credit
claimants in employment
Lower than the borough
average (10.1%)



74.3%
Black, Asian and
Multi-Ethnic population
Higher than the borough
average (69.1%)



28.9%
obesity amongst
children in Year 6



Lower than the borough
average (29.3%)

4.1%
NEET and
Not Known



Higher than the borough
average (3.9%)

**Barking &
Dagenham**

Sources (Ward infographic)

Office for National Statistics 2022 mid-year population estimates (Population, age)

Office for National Statistics 2021 Census (Ethnicity, adult qualifications, deprived households)

Office for National Statistics 2023 (Births)

Greenspace info for Greater London 2023 (Open space)

Office for National Statistics year ending March 2024 (Average house price)

CACI paycheck 2024 (Median household income)

Department for Work and Pensions September 2024 (Unemployment related benefits claimants, Universal Credit claimants who are in employment)

Department for Education Summer 2024 (GCSE)

Metropolitan Police Service January 2024 to December 2024 (Crimes, domestic abuse)

National Child Measurement Programme 2023-24 (Obesity amongst children in Year 6)

15billionebp management information service June 2024 (NEET and Not Known)