

Starting school full-time in 2026 - a quick guide

Starting school full-time

Information for parents about children starting school in 2026



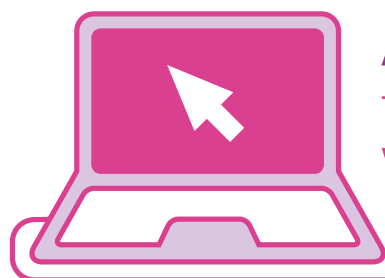
Barking & Dagenham

This leaflet is a quick guide to applying for school places for parents whose children were born between 1 September 2021 and 31 August 2022. If your child was born between these dates you can apply now for them to start school full-time in September 2026.

No child is guaranteed a place at a particular school. You must apply for a place even if your child is already at the school's nursery or has a brother or sister at that school.

There are full details of the admissions process in the e-booklet 'Starting school full-time in 2026'. See our website for details. If you do not follow the process in this e-booklet, you risk not getting a place for your child at your preferred school.

You must apply online by the closing date of 15 January 2026. We will send you an **email on the evening of 16 April 2026** to let you know the results of your application. **We must receive your reply by 30 April 2026 or we will withdraw our offer and your child will not have a school place.**



Apply online now

for a reception school place
www.lbbd.gov.uk/admissions

The closing date for your online application and the other information we ask for is

15 January 2026

Our faith schools that use extra documents or supplementary information forms (SIF)

Forms are available on our website or direct from all our faith schools. However, SIFs are not needed for George Carey C of E Primary School.

St Joseph's Catholic Primary (Barking)

The Broadway, Barking, IG11 7AR
Phone: 020 8270 6474

St Joseph's Catholic Primary (Dagenham)

Connor Road, Dagenham, RM9 5UL
Phone: 020 8270 6480

St Margaret's C of E Primary

North Street, Barking, IG11 8AS
Phone: 020 8594 4003

St Peter's Catholic Primary

Goresbrook Road, Dagenham, RM9 6UU
Phone: 020 8270 6524

St Teresa Catholic Primary

Bowes Road, Dagenham, RM8 2XJ
Phone: 020 8270 4757

St Vincent's Catholic Primary

Burnside Road, Dagenham, RM8 2JN
Phone: 020 8270 6695

Contact details for neighbouring authorities' school admissions sections

Essex County Council:

County Hall, Market Road, Chelmsford CM1 1QH
Phone: 0345 603 2200
Email: admissions@essex.gov.uk

London Borough of Havering:

Town Hall Main Road Romford Essex RM1 2BB
Phone: 01708 434 600
Email: schooladmissions@havering.gov.uk

London Borough of Newham:

Newham Dockside, 1000 Dockside Road, London, E16 2QU
Phone: 020 8430 2000
Email: pupil.services@newham.gov.uk

London Borough of Redbridge:

255-259 High Road, Ilford, Essex, IG1 1NN
Phone: 020 8708 3139
Email: admissions@redbridge.gov.uk

Barking & Dagenham

What you need to do

1

Read and make sure you understand the admissions process for our borough, which is available on our website in the e-booklet 'Starting school full-time in 2026' (pages 8 to 40 in particular).

2

Collect information to help you decide which schools to list on the form as your preferences. Each school can give you their prospectus, their most recent Ofsted inspection report, their exam results and their governing body's annual report. The location of each of our schools is on page 45 and their contact details are on page 46 of the admission e-booklet. The contact details for the admissions sections of our neighbouring boroughs are on page one of this leaflet.

3

Contact the schools to find out what they can offer. Many schools will have virtual tours available on their websites.

4

Study the information on pages 33 and 34 of the admission e-booklet, which shows statistics from last year's applications for our schools. This information should give you an idea of what happened last year and the chance that you would have had of getting a place at your preferred Barking and Dagenham schools. This information also shows the number of parents who were successful in getting a place at one of their preferences and how popular our schools are. We recommend that you consider including your local school as one of your preferences. Your chances of being offered a place at a school increase the closer you live to the school. Previous editions of this e-booklet and statistics for the past five years is published on our website. If you are applying for schools outside the borough, study the information the relevant local authority and school provide.

Important note

If the school receives more applications than there are places available (it is oversubscribed) we or the school will use the admission criteria to decide whether to offer your child a place. Make sure you read the admission criteria for Barking and Dagenham schools on pages 23 to 32 of the 'Starting school full-time in 2026' e-booklet. If you live in our borough and we cannot give your child a place at any of the schools you have applied for, we will give your child a place at any school in the borough which has a place available.

5

To apply, fill in and submit the common application form (CAF) online by the closing date. **Please list six schools in order of your preference order. Most schools receive more applications than there are places available (they are oversubscribed). In this situation, not everybody will be given a place. We need information to help us offer you another school, and the more schools you list the greater the chance of this.**

Carefully check the names and addresses of the schools you have selected, as some schools have similar names. Please make sure you attach all the other information we ask for. This may be proof that you are the child's guardian, proof of your address, or proof that your child is or was in the care of a local authority (pages 12 to 14).

If you live outside Barking and Dagenham, you must fill in the common application form available from the borough or county council area that you live in and return that form to that council by their closing date.

6

Don't forget to fill in any extra supplementary information forms (SIF) and provide any documents or information for any schools or local authority that ask you to do this and send these forms and documents back to them before the closing date. We will not pass on any extra information or SIFs to schools or local authorities on your behalf. **Please remember to send your SIF documents to the relevant school and not School Admission Team at London Borough of Barking and Dagenham**

7

We will send you an email on National Offer Day in the evening of 16 April 2026 to let you know the results of your application. **We must receive your reply by 30 April 2026 or we will withdraw our offer and your child will not have a school place.**

8

If your information changes, you must alter the relevant fields on your online application form by the closing date. We will send you an email with a new version number every time you change your application. If you cannot make these changes to your online application or if there are any changes you need to tell us about after the closing date, you must email the School Admissions Team. Our email address is infos@lbdb.gov.uk

Things to remember

Getting a receipt

Use this space to record the username, email address and password you have used to make your application. It is important that you keep this information. Without it you will not be able to go online to see which school place we have offered your child and tell us if you want to accept it.

Your application is only valid when you press the 'Submit application' button at the end of the 'Check & submit' page. You will then be issued with an application reference number (ARN). The eAdmissions Team will then send you a confirmation email that will include all the details of the application you have just made along with your ARN. In the case of twins, triplets and so on, make sure you have a different ARN for each child.

Email details used

Email address:

Password:

eAdmission details issued

Username:

Password:

You should also record your application reference number.

This is a receipt that shows you have successfully submitted (made) your application.

3	0	1	-	2	0	2	6	-	0	9	-	E	-						
---	---	---	---	---	---	---	---	---	---	---	---	---	---	--	--	--	--	--	--

Why you should accept your child's school place

We will send you the results of your application on National Offer Day the **evening of 16 April 2026** and you **must let us know if you want the place we have offered your child by 30 April 2026**.

Please use the eAdmissions website to reply. You can log on to the site with the username and password you received when you registered to make your application. If you have forgotten your details you can enter your email address and get a reminder sent to you.

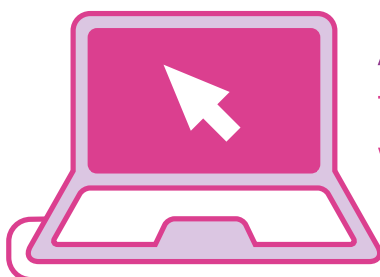
You can also accept our offer by emailing us at infos@lbbd.gov.uk In your email you must include your child's name, date of birth and application reference number (ARN). You can phone us five working days after replying to check that we have received your email.

If you do not accept the place we offer you by 30 April 2026, we will withdraw our offer. If we withdraw our offer or you reject it, your child will not have a school place.

Because of this, we recommend that you accept the place we offer you even if you want to stay on the interest list or appeal against our decision (or both).

If you reject or we withdraw our offer, we will not offer your child another school place unless a place becomes available from the interest list for your preferred schools or during the term after your child's fifth birthday (this is when they must start school by law).

When your child is due to start school, the place we give you may be further from your home than the one we originally offered you.



Apply online now
for a reception school place
www.lbbd.gov.uk/admissions

The closing date for your online application
and the other information we ask for is

15 January 2026



Sending in your information

Common application form

If you live in this borough go to the link on our website at www.lbbd.gov.uk/admissions or you can go straight the eAdmissions site at www.eadmissions.org.uk no later than midnight on 15 January 2026.

Do not leave it until the last day to apply.

Important notes

- If your application is late, you are not likely to get a place at an oversubscribed school. If we receive your application after the deadline, we will deal with it after we have dealt with the applications that we received on time. At that time we will have given most of the available places to pupils whose applications we received by the closing date.
- If you try to apply online and you cannot see your exact address in the list provided, or the schools you want to apply for are not listed, you **must** contact us (the School Admissions Team) by 5pm on 14 January 2026, otherwise your application will be late. Our contact details are below.
- Please make sure you attach all other forms and documents we ask for. This may be proof that you are the child's guardian, proof of address or proof that your child is or was in the care of a local authority (pages 12 to 14 of the admissions e-booklet).
- Make sure you read pages 36 to 39 of our admissions e-booklet for details of how to get a receipt and how to send us any extra information we ask for.
- Some schools may ask you to fill in extra forms. It is your responsibility to fill in any extra supplementary information forms (SIF) for any schools or local authorities that ask you to do this and send these forms and documents back to them before the closing date (see pages 37 and 38 of the admissions e-booklet). We will not pass on any extra documents, information or SIFs to schools or local authorities on your behalf.

Contacting us

Online admissions helpdesk:

If you have any technical difficulties while making your application online, the online admissions helpdesk is available from 9.30am to 5.30pm Monday to Friday. Please phone 020 8255 5555 and select option 1. For all other non-technical questions, please contact the School Admissions Team.

By phone:

You can call us for information on **020 8215 3004**.

By email:

Email us for information at **infos@lbbd.gov.uk**

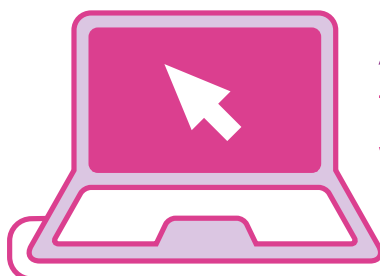
By post:

We do not accept documents by post. Please call or email us if you have any difficulties making your application.

Remember

The closing date for all forms and information we ask for is 15 January 2026.

We will email you the results of your application on the evening of National Offer Day 16 April 2026. We must receive your reply by 30 April 2026 or your child will not have a school place.



Apply online now
for a reception school place
www.lbbd.gov.uk/admissions

The closing date for your online application
and the other information we ask for is

15 January 2026

