

Did you know
Beam has...

9,274
residents

4th lowest in the borough



2,440
under 16s



4th highest proportion
in the borough

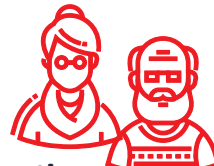
5,964
16s to 64s



3rd lowest proportion
in the borough

870

65 and over



8th highest proportion
in the borough

33

average age



Same as the borough average

61.2%
deprived
households



Lower than the borough
average (62.4%)

45.1

average attainment
8 score per pupil (GCSE)



3rd lowest in the borough

23.6%

adults with no
qualifications



Higher than the borough
average (22.7%)

21.1%

open space



Lower than the borough
average (26.6%)

62.7

births per 1,000
women of childbearing age



Lower than the borough
average (66.8)

82.8

crimes per
1,000 people



Lower than the
borough average (87)

15.9

domestic abuse
offences per 1,000 people



Higher than the borough
average (14.6)

£360,000

median house
price (all types)



Lower than the
borough average (£370,000)

9.1%

unemployment
related benefits claimants



Higher than the borough
average (7.8%)

21.8%

Pension Credit
claimants



Lower than the borough
average (24.3%)

11.7%

Universal Credit
claimants in employment



3rd highest in the borough

69.7%

Black, Asian and
Multi-Ethnic population



Higher than the borough
average (69.1%)

34%

obesity amongst
children in Year 6



Higher than the borough
average (29.3%)

5.3%

NEET and
Not Known



2nd highest in the borough

**Barking &
Dagenham**

Sources (Ward infographic)

Office for National Statistics 2024 mid-year population estimates (Population, age)

Office for National Statistics 2021 Census (Ethnicity, adult qualifications, deprived households)

Office for National Statistics 2024 (Births)

Greenspace info for Greater London 2023 (Open space)

Office for National Statistics year ending March 2025 (Average house price)
– estimated from Middle Super Output Area data

Department for Work and Pensions September 2025 (Unemployment related benefits claimants, Universal Credit claimants who are in employment)

Department for Work and Pensions May 2025 (Pension Credit claimants)

Department for Education Summer 2025 (GCSE)

Metropolitan Police Service July 2024 to June 2025 (Crimes, domestic abuse)

National Child Measurement Programme 2023-24 (Obesity amongst children in Year 6)

INSPIRE management information service June 2025 (NEET and Not Known)