

Did you know
Becontree has...

10,295

residents

6th lowest in the borough



2,614

under 16s

9th highest proportion
in the borough



6,803

16s to 64s

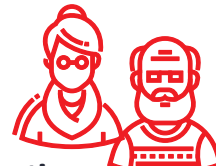
11th highest proportion
in the borough



878

65 and over

8th lowest proportion
in the borough



33

average age

Same as the borough average



63.7%

deprived
households

Higher than the borough
average (62.4%)



48.7

average attainment
8 score per pupil (GCSE)

Same as the borough average



24.1%

adults with no
qualifications

Higher than the borough
average (22.7%)



1.5%

open space

Lowest in the borough



67.4

births per 1,000
women of childbearing age

Higher than the borough
average (66.8)



71.9

crimes per
1,000 people

Lower than the
borough average (87)



17.3

domestic abuse
offences per 1,000 people

3rd highest in the borough



£370,800

median house
price (all types)

Higher than the
borough average (£370,000)



7.5%

unemployment
related benefits claimants
Lower than the borough
average (7.8%)



28%

Pension Credit
claimants

Higher than the borough
average (24.3%)



9.2%

Universal Credit
claimants in employment
Lower than the borough
average (10%)



70%

Black, Asian and
Multi-Ethnic population

Higher than the borough
average (69.1%)



28.3%

obesity amongst
children in Year 6

Lower than the borough
average (29.3%)



4.1%

NEET and
Not Known

Higher than the
borough average (3.7%)



**Barking &
Dagenham**

Sources (Ward infographic)

Office for National Statistics 2024 mid-year population estimates (Population, age)

Office for National Statistics 2021 Census (Ethnicity, adult qualifications, deprived households)

Office for National Statistics 2024 (Births)

Greenspace info for Greater London 2023 (Open space)

Office for National Statistics year ending March 2025 (Average house price)
– estimated from Middle Super Output Area data

Department for Work and Pensions September 2025 (Unemployment related benefits claimants, Universal Credit claimants who are in employment)

Department for Work and Pensions May 2025 (Pension Credit claimants)

Department for Education Summer 2025 (GCSE)

Metropolitan Police Service July 2024 to June 2025 (Crimes, domestic abuse)

National Child Measurement Programme 2023-24 (Obesity amongst children in Year 6)

INSPIRE management information service June 2025 (NEET and Not Known)