

Did you know
Chadwell Heath
has...

15,211
residents

5th highest in the borough



3,906
under 16s

6th highest proportion
in the borough



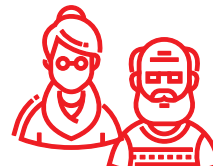
9,483
16s to 64s

Lowest proportion
in the borough



1,822
65 and over

2nd highest proportion
in the borough



35
average age

Older than the
borough average (33)



63.2%
deprived
households

Higher than the borough
average (62.4%)



48.3

average attainment
8 score per pupil (GCSE)
Lower than the borough
average (48.7)



23.1%
adults with no
qualifications

Higher than the borough
average (22.7%)



53.2%
open space

2nd highest in the borough



64.8

births per 1,000
women of childbearing age
Lower than the borough
average (66.8)



77.7
crimes per
1,000 people
Lower than the
borough average (87)



12.8
domestic abuse
offences per 1,000 people
Lower than the borough
average (14.6)



£408,600
median house
price (all types)

2nd highest in the borough



6.9%
unemployment
related benefits claimants
Lower than the borough
average (7.8%)



18.8%
Pension Credit
claimants
Lower than the borough
average (24.3%)



8.9%
Universal Credit
claimants in employment
Lower than the borough
average (10%)



67.8%
Black, Asian and
Multi-Ethnic population
Lower than the borough
average (69.1%)



23.8%
obesity amongst
children in Year 6

Lowest in the borough



4.1%
NEET and
Not Known

Higher than the borough
average (3.7%)



**Barking &
Dagenham**

Sources (Ward infographic)

Office for National Statistics 2024 mid-year population estimates (Population, age)

Office for National Statistics 2021 Census (Ethnicity, adult qualifications, deprived households)

Office for National Statistics 2024 (Births)

Greenspace info for Greater London 2023 (Open space)

Office for National Statistics year ending March 2025 (Average house price)
– estimated from Middle Super Output Area data

Department for Work and Pensions September 2025 (Unemployment related benefits claimants, Universal Credit claimants who are in employment)

Department for Work and Pensions May 2025 (Pension Credit claimants)

Department for Education Summer 2025 (GCSE)

Metropolitan Police Service July 2024 to June 2025 (Crimes, domestic abuse)

National Child Measurement Programme 2023-24 (Obesity amongst children in Year 6)

INSPIRE management information service June 2025 (NEET and Not Known)