

Did you know Mayesbrook has...

16,299

residents

Highest in the borough



4,268

under 16s



5th highest proportion
in the borough

10,771

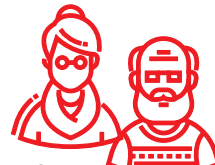
16s to 64s



10th highest proportion
in the borough

1,260

65 and over



6th lowest proportion
in the borough

33

average age



Same as the borough average

64.1%

deprived
households



Higher than the borough
average (62.4%)

50.1



average attainment
8 score per pupil (GCSE)
Higher than the borough
average (48.7)

23.7%

adults with no
qualifications



Higher than the borough
average (22.7%)

32.6%

open space



Higher than the borough
average (26.6%)

63



births per 1,000
women of childbearing age
Lower than the borough
average (66.8)

55.3

crimes per
1,000 people



Lowest in the borough

12.6

domestic abuse
offences per 1,000 people
Lower than the borough
average (14.6)



£361,300

median house
price (all types)



Lower than the
borough average (£370,000)

8.3%

unemployment
related benefits claimants
Higher than the borough
average (7.8%)



24.6%

Pension Credit
claimants
Higher than the borough
average (24.3%)



10.2%

Universal Credit
claimants in employment
Higher than the borough
average (10%)



67.4%

Black, Asian and
Multi-Ethnic population
Lower than the borough
average (69.1%)



24.7%

obesity amongst
children in Year 6
Lower than the borough
average (29.3%)



5.6%

NEET and
Not Known



Highest in the borough

Barking & Dagenham

Sources (Ward infographic)

Office for National Statistics 2024 mid-year population estimates (Population, age)

Office for National Statistics 2021 Census (Ethnicity, adult qualifications, deprived households)

Office for National Statistics 2024 (Births)

Greenspace info for Greater London 2023 (Open space)

Office for National Statistics year ending March 2025 (Average house price)
– estimated from Middle Super Output Area data

Department for Work and Pensions September 2025 (Unemployment related benefits claimants, Universal Credit claimants who are in employment)

Department for Work and Pensions May 2025 (Pension Credit claimants)

Department for Education Summer 2025 (GCSE)

Metropolitan Police Service July 2024 to June 2025 (Crimes, domestic abuse)

National Child Measurement Programme 2023-24 (Obesity amongst children in Year 6)

INSPIRE management information service June 2025 (NEET and Not Known)