

Did you know Village has...

13,280

residents

10th highest in the borough



3,247

under 16s



5th lowest proportion
in the borough

8,665

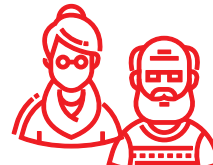
16s to 64s



7th lowest proportion
in the borough

1,368

over 65s



4th highest proportion
in the borough

35

average age



Older than the borough
average (33)

64.3%

deprived
households



Higher than the borough
average (62.4%)

48



average attainment
8 score per pupil (GCSE)

Lower than the borough
average (48.7)

23.8%

adults with no
qualifications



Higher than the borough
average (22.7%)

46.6%

open space



Higher than the borough
average (26.6%)

64.9



births per 1,000
women of childbearing age
Lower than the borough
average (66.8)

86.1

crimes per
1,000 people



Lower than the borough
average (87)

16.1

domestic abuse
offences per 1,000 people



Higher than the borough
average (14.6)

£366,500

median house
price (all types)



Lower than the
borough average (£370,000)

8.1%

unemployment
related benefits claimants



Higher than the borough
average (7.8%)

24.5%

Pension Credit
claimants



Higher than the borough
average (24.3%)

10.8%

Universal Credit
claimants in employment



Higher than the borough
average (10%)

62.7%

Black, Asian and
Multi-Ethnic population



Lower than the borough
average (69.1%)

30%

obesity amongst
children in Year 6



Higher than the borough
average (29.3%)

2.8%

NEET and
Not Known



Lower than the borough
average (3.7%)

Barking & Dagenham

Sources (Ward infographic)

Office for National Statistics 2024 mid-year population estimates (Population, age)

Office for National Statistics 2021 Census (Ethnicity, adult qualifications, deprived households)

Office for National Statistics 2024 (Births)

Greenspace info for Greater London 2023 (Open space)

Office for National Statistics year ending March 2025 (Average house price)
– estimated from Middle Super Output Area data

Department for Work and Pensions September 2025 (Unemployment related benefits claimants, Universal Credit claimants who are in employment)

Department for Work and Pensions May 2025 (Pension Credit claimants)

Department for Education Summer 2025 (GCSE)

Metropolitan Police Service July 2024 to June 2025 (Crimes, domestic abuse)

National Child Measurement Programme 2023-24 (Obesity amongst children in Year 6)

INSPIRE management information service June 2025 (NEET and Not Known)