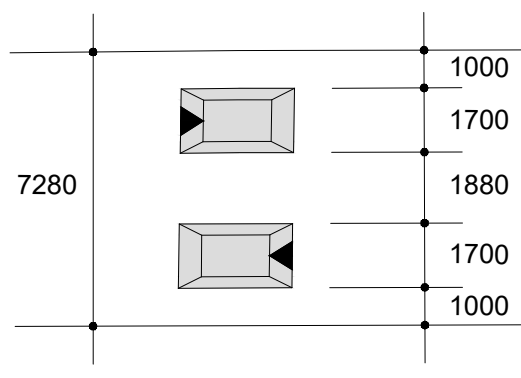
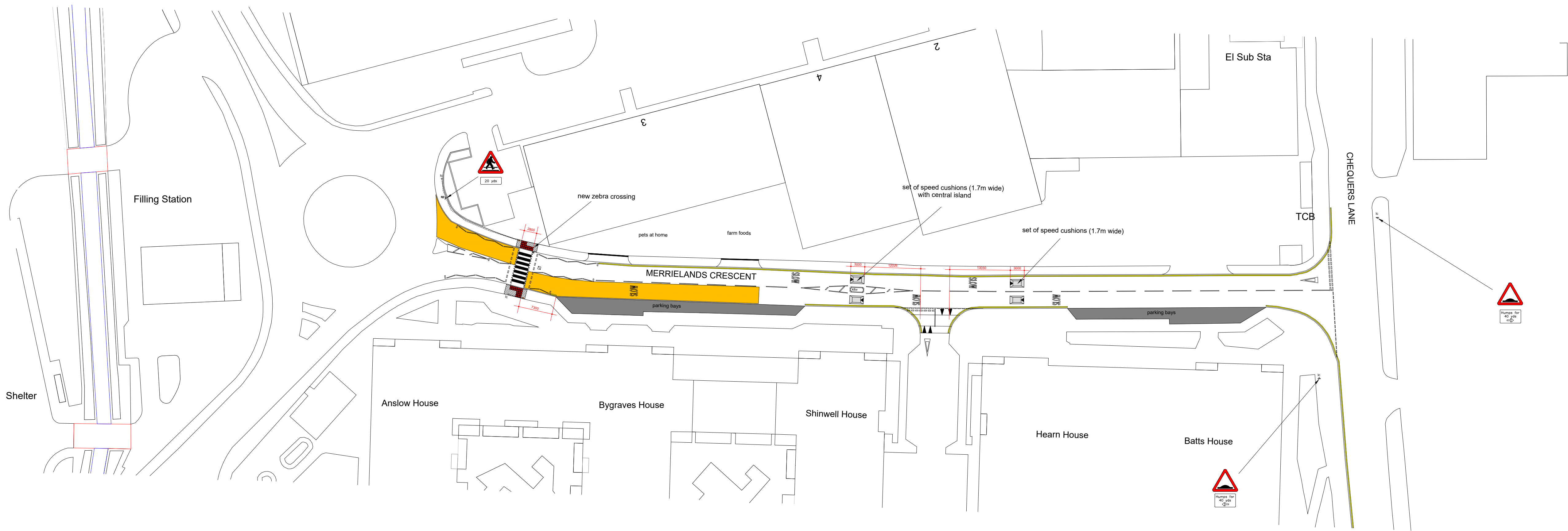
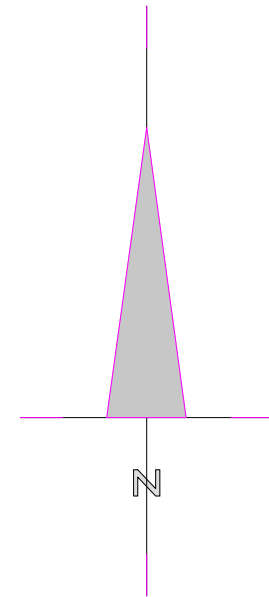


SPEED CUSHIONS WITH CENTRAL ISLAND  
Scale 1:200



SPEED CUSHIONS  
Scale 1:200

LEGEND	
	denotes new buff coloured HFS Type 1, hot applied anti-skid material at approaches to zebra crossing
	denotes new asphalt surface around crossing 80mm DBM binder course/20mm DBM surface course
	denotes new 8m fabrikat/cu phosco or equivalent column painted to zebra column specification with n66w TRT Aspect 2 lantern with offset (front) modubel
eg	denotes existing gulley
lc	denotes existing lamp column
mh	denotes existing manhole cover
sp	denotes new sign wide base post
kib	denotes new back to back keep left bollard (TMP-EVO N)



B	dimensions added	25.11.2025
A	wide base sign post added	12.08.2025
Rev.	Amendment	Date



Divisional Director of Strategic Asset Management & Capital Delivery  
The London Borough of Barking and Dagenham  
Town Hall, Barking  
Essex IG11 7LU  
Telephone: 020 8592 4500

Scheme	
ROAD SAFETY PROGRAMME 2025-2026	
Title	
MERRILANDS CRESCENT PROPOSED TRAFFIC CALMING MEASURES	
Drawn	GJC
Checked	
Scale	1 : 500
Date	November 2025
Drawing No.	
MERRILANDS - C05055 - 001B	