

Barking & Dagenham

State of the Borough 2019

Employment & Enterprise

6.1%
unemployment



Below previous year (6.4%)
Above East London average (5.3%)

69%
employment



Above previous year (68.6%)
Below East London average (72.4%)

0.8%
JSA claimants



Below previous year (2.0%)
Same as East London average

4.9%
ESA claimants



Below previous year (5.5%)
Above East London average (4.3%)

3.9%
Universal Credit and not in employment



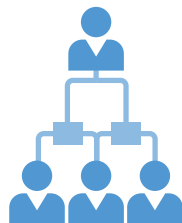
Above previous year (0.6%)
Above East London average (2.8%)

39.6%
new businesses surviving 5 years



Above previous year (38.3%)
Above East London average (39.5%)

0.49
jobs density



Above previous year (0.48)
Below East London average (0.69)

1.6%
jobs growth



Below previous year (3.2%)
Below East London average (3.2%)

£29.3k
median gross annual pay for full time workers



Below previous year (£30.2k)
Below London average (£36k)



Barking and Dagenham
Delivery Partnership

BD
COLLECTIVE

London Borough of
Barking & Dagenham
lbbd.gov.uk

Barking & Dagenham

State of the Borough 2019

Safety

22

ASB reported to
Police per 1,000 people



Below previous year (23.8)
Above Outer London
average (21.5)

84.6

ASB reported to
Council per 1,000 people



Below previous year (87.6)

55.5%

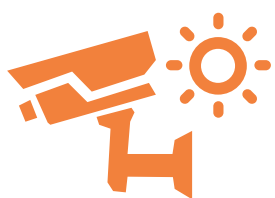
feel unsafe
after dark



Above previous year (47.1%)

14.7%

feel unsafe
during day



Above previous year (11.7%)

1.5

racist hate crime
per 1,000 people



Below previous year (1.7)
Same as Outer London
average

12.7

domestic abuse
offences per 1,000
people



Above previous year (12.3)
Above East London
average (10.5)

26.6%

assessments for
children's social care had
domestic violence as a factor



Above previous year (24.5%)
Below East London
average (38.8%)



Barking and Dagenham
Delivery Partnership

BD
COLLECTIVE

London Borough of
Barking & Dagenham
lbbd.gov.uk

Barking & Dagenham

State of the Borough 2019

Skills & Education

79.4%

level 1
qualifications



Above previous year (74.2%)
Below London average
(84.8%)

33%

level 4
qualifications



Above previous year (30.7%)
Below London average
(53.1%)

46.1

average attainment
8 score per pupil (GCSE)



Below previous year (46.7)
Below London average
(49.4)



Barking and Dagenham
Delivery Partnership

BD
COLLECTIVE

London Borough of
Barking & Dagenham
lbbd.gov.uk

Barking & Dagenham

State of the Borough 2019

Environment

850.8kg

waste per household



Above previous year (843.4kg)
Above London average (559.5kg)

25%

recycling rate



Below previous year (25.3%)
Below London average (33.1%)

63.5%

think rubbish or litter is a problem



Above previous year (58%)



Barking and Dagenham
Delivery Partnership

BD
COLLECTIVE

London Borough of
Barking & Dagenham
lbbd.gov.uk

Barking & Dagenham

State of the Borough 2019

Community Engagement

22.1%

gave unpaid help
in last 12 months



Below previous year (23.3%)

53,000

engaged with
Studio 3 Arts
in 2018-19



Double previous year (26,600)

3,295

Every One Every
Day participants
registered



as at October 2019 almost
treble than reported last year

8.4%

adults
volunteered to support
sport/physical activity



Below previous year (10.7%)

Below East London average (10.5%)



Barking and Dagenham
Delivery Partnership

BD
COLLECTIVE

London Borough of
Barking & Dagenham
lbbd.gov.uk

Barking & Dagenham

State of the Borough 2019

Housing

10.6

ratio house
prices to earnings



Above previous year (9.9)
Below East London
average (12.8)

3,121

new homes
to be built by
Be First by
2024



BeFirst

75%

of new homes
to be built by
Be First by
2024 will be
affordable



BeFirst

£1,200

median private
sector rent



Same as previous year
Below East London average
(£1,403)

17.3%

non-decent
homes



Below previous year (48.3%)
Above East London
average (12%)



Barking and Dagenham
Delivery Partnership

BD
COLLECTIVE

London Borough of
Barking & Dagenham
lbbd.gov.uk

Barking & Dagenham

State of the Borough 2019

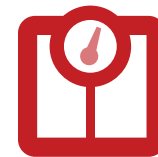
Health & Wellbeing

43.9%
year 6 pupils
with excess weight



Above previous year (42.8%)
Above East London
average (41.2%)

64.4%
adults with
excess weight



Above previous year (62.8%)
Above East London
average (58.1%)

1,520 **NHS**
NHS admissions obesity
a factor per 100,000 people

Above previous year (1,250)
Above East London
average (1,223)

7.66
life satisfaction
self-perception



Above previous year (7.50)
Above London average (7.52)

7.95
worthiness
self-perception



Above previous year (7.74)
Above London average (7.73)

7.61
happiness
self-perception



Above previous year (7.38)
Above London average (7.44)

2.85
anxiety
self-perception



Below previous year (3.02)
Below London average (3.13)

62.8
male healthy
life expectancy



Above previous year (58.2)
Below London average (63.9)

62.3
female healthy
life expectancy



Above previous year (60.6)
Below London average (64.6)

53.6%
adults active 150
minutes per week



Above previous year (49.2%)
Below East London
average (60%)

66.1%
adult participation
in sport and physical
activity



Below previous year (67.9%)
Below East London
average (74.2%)

32.6%
adults walk
5 times a week



Above previous year (25.7%)
Below East London
average (35.3%)

6.7%
adults cycle
once a week



Below previous year (6.8%)
Below East London
average (11.2%)



Barking and Dagenham
Delivery Partnership

BD
COLLECTIVE

London Borough of
Barking & Dagenham
lbbd.gov.uk