



# Barking and Dagenham

## Introduction

The Public Health Outcomes Framework [Healthy lives, healthy people: Improving outcomes and supporting transparency](#) sets out a vision for public health, desired outcomes and the indicators that will help us understand how well public health is being improved and protected. The framework concentrates on two high-level outcomes to be achieved across the public health system, and groups further indicators into four 'domains' that cover the full spectrum of public health. The outcomes reflect a focus not only on how long people live, but on how well they live at all stages of life.

This profile currently presents data for the first set of indicators at England and upper tier local authority levels, collated by Public Health England.

The profile allows you to:

- Compare your local authority against other authorities in the region
- Benchmark your local authority against the England value

Public Health Outcomes Framework baseline data will be revised and corrected in accordance with the [general DH statistical policy on revisions and corrections](#).

## Contents

### Spine charts

|                                    |        |
|------------------------------------|--------|
| Wider determinants of health       | Page 2 |
| Health improvement                 | Page 3 |
| Health protection                  | Page 4 |
| Healthcare and premature mortality | Page 5 |

### Tartan Rugs

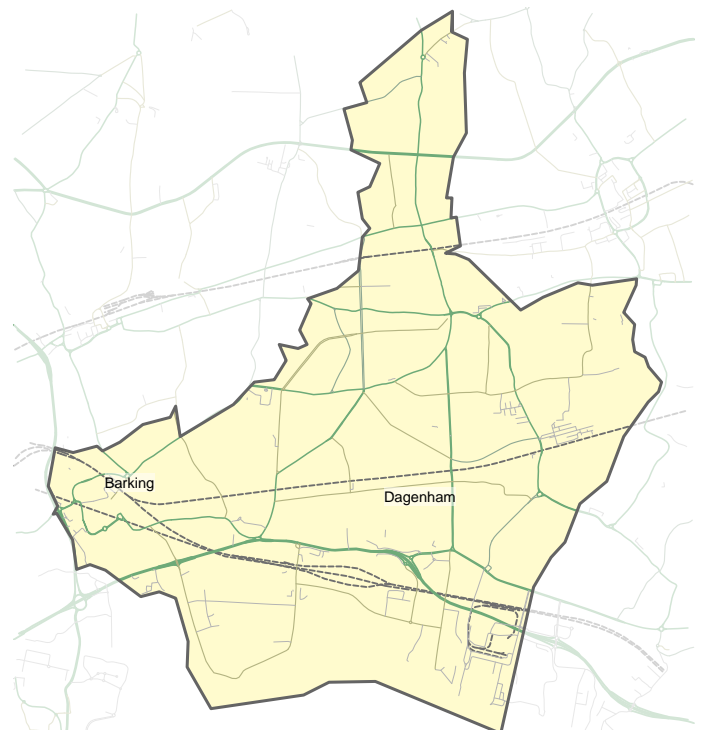
|                                    |        |
|------------------------------------|--------|
| Wider determinants of health       | Page 6 |
| Health improvement                 | Page 7 |
| Health protection                  | Page 8 |
| Healthcare and premature mortality | Page 9 |

### Summary Charts

|                                    |         |
|------------------------------------|---------|
| Wider determinants of health       | Page 10 |
| Health improvement                 | Page 12 |
| Health protection                  | Page 15 |
| Healthcare and premature mortality | Page 18 |

### Inequalities

|              |         |
|--------------|---------|
| Inequalities | Page 21 |
|--------------|---------|



Crown copyright and database rights 2013 Ordnance Survey 100016969  
OpenStreetMap contributors ODbL

# [www.phoutcomes.info](http://www.phoutcomes.info)

Produced by Public Health England.

For enquiries please contact [phof.enquiries@phe.gov.uk](mailto:phof.enquiries@phe.gov.uk) or call us on 020 7654 8307.



# Spine Charts

| Wider determinants of health   | Period              | Local value | Eng. value | Eng. lowest | Range | Eng. highest |
|--|---------------------|-------------|------------|-------------|-------|--------------|
| 1.01 Children in poverty   | 2010                | 35.3        | 21.1       | 7.4         |       | 45.9         |
| 1.03 Pupil absence   | 2011/12             | 4.75        | 5.11       | 4.30        |       | 6.66         |
| 1.04i First time entrants to the youth justice system  | 2012                | 491         | 537        | 151         |       | 1,427        |
| 1.05 16-18 year olds not in education employment or training   | 2012                | 5.4         | 5.8        | 2.0         |       | 10.5         |
| 1.06i Adults with a learning disability who live in stable and appropriate accommodation                         | 2011/12             | 87.6        | 70.0       | 30.9        |       | 93.8         |
| 1.06ii Adults in contact with secondary mental health services who live in stable and appropriate accommodation  | 2010/11             | 86.0        | 66.8       | 1.3         |       | 92.8         |
| 1.08i Gap in the employment rate between those with a long-term health condition and the overall employment rate | 2012                | 17.3        | 7.1        | -5.3        |       | 21.7         |
| 1.08ii Gap in the employment rate between those with a learning disability and the overall employment rate       | 2011/12             | 57.8        | 63.2       | 40.2        |       | 73.1         |
| 1.09i Sickness absence - The percentage of employees who had at least one day off in the previous week           | 2009 - 11           | 2.2         | 2.2        | 0.6         |       | 3.5          |
| 1.09ii Sickness absence - The percent of working days lost due to sickness absence                               | 2009 - 11           | 1.5         | 1.5        | 0.3         |       | 2.7          |
| 1.10 Killed and seriously injured casualties on England's roads  | 2009 - 11           | 25.9        | 41.9       | 17.5        |       | 93.2         |
| 1.12i Violent crime (including sexual violence) - hospital admissions for violence                               | 2009/10 - 11/12     | 94.8        | 67.7       | 9.9         |       | 213.5        |
| 1.12ii Violent crime (including sexual violence) - violence offences   | 2011/12             | 22.9        | 13.6       | 4.9         |       | 32.7         |
| 1.13i Re-offending levels - percentage of offenders who re-offend  | 2010                | 27.4        | 26.8       | 17.3        |       | 36.3         |
| 1.13ii Re-offending levels - average number of re-offences per offender  | 2010                | 0.72        | 0.77       | 0.41        |       | 1.25         |
| 1.14i The percentage of the population affected by noise - Number of complaints about noise                      | 2011/12             | 26.8        | 7.5        | 2.5         |       | 58.4         |
| 1.15i Statutory homelessness - homelessness acceptances  | 2011/12             | 2.9         | 2.3        | 0.2         |       | 9.7          |
| 1.15ii Statutory homelessness - households in temporary accommodation  | 2011/12             | 16.0        | 2.3        | 0.0         |       | 32.4         |
| 1.16 Utilisation of outdoor space for exercise/health reasons  | Mar 2009 - Feb 2012 | 2.5         | 14.0       | 2.2         |       | 29.1         |
| 1.18i Social Isolation: % of adult social care users who have as much social contact as they would like          | 2011/12             | 35.9        | 42.3       | 32.2        |       | 54.2         |

**1.01-** % of children living in households where income is less than 60% of median household income before housing costs **1.03-** % of half days missed by pupils due to overall absence (incl. authorised and unauthorised absence) **1.04i-** Rate of 10-17 year olds receiving their first reprimand, warning or conviction per 100,000 population **1.05-** % of 16-18 year olds not in education, employment or training (NEET) **1.06i-** % of adults with a learning disability who are known to the council, who are recorded as living in their own home or with their family **1.06ii-** % of adults receiving SMHS living independently at the time of their most recent assessment, formal review or other multi-disciplinary care planning meeting **1.08i-** % point gap in the employment rate between those with a long-term health condition and the overall employment rate **1.08ii-** % point gap in the employment rate between those with a learning disability and the overall employment rate **1.09i-** % of employees who had at least one day off due to sickness absence in the previous working week **1.09ii-** % of working days lost due to sickness absence in the previous working week **1.10-** Rate of people KSI on the roads, all ages, per 100,000 resident population **1.12i-** Age-standardised rate of emergency hospital admissions for violence per 100,000 population **1.12ii-** Crude rate of violence against the person offences per 1,000 population **1.13i-** % of offenders who re-offend from a rolling 12 month cohort **1.13ii-** Average no. of re-offences committed per offender from a rolling 12 month cohort **1.14i-** No. of complaints per year per LA about noise per thousand population **1.15i-** Homelessness acceptances per 1,000 households **1.15ii-** Households in temporary accommodation per 1,000 households **1.16-** % of people using outdoor space for exercise/health reasons **1.18i-** % of adult social care users who have as much social contact as they would like according to the Adult Social Care Users Survey

## How to interpret the spine charts

England lowest                      England value                      England highest  
 25th percentile                      75th percentile

Significantly lower                      Significantly higher                      Not significant  
 Significance Not Tested

| Health improvement  | Period  | Local value | Eng. value | Eng. lowest | Range | Eng. highest |
|---|---------|-------------|------------|-------------|-------|--------------|
| 2.01 Low birth weight of term babies  | 2010    | 3.31        | 2.85       | 1.75        |       | 7.79         |
| 2.02i Breastfeeding - Breastfeeding initiation  | 2011/12 |             | 74.0       | 41.8        |       | 94.3         |
| 2.02ii Breastfeeding - Breastfeeding prevalence at 6-8 weeks after birth                                | 2011/12 | 54.5        | 47.2       | 19.7        |       | 82.8         |
| 2.03 Smoking status at time of delivery   | 2011/12 |             | 13.2       | 2.9         |       | 29.7         |
| 2.04 Under 18 conceptions   | 2011    | 46.3        | 30.7       | 9.4         |       | 58.1         |
| 2.06i Excess weight in 4-5 and 10-11 year olds - 4-5 year olds  | 2011/12 | 26.7        | 22.6       | 16.1        |       | 30.0         |
| 2.06ii Excess weight in 4-5 and 10-11 year olds - 10-11 year olds                                       | 2011/12 | 42.2        | 33.9       | 26.6        |       | 42.8         |
| 2.07i Hospital admissions caused by unintentional and deliberate injuries in children (aged 0-14 years) | 2011/12 | 88.9        | 118.2      | 68.7        |       | 211.4        |
| 2.07ii Hospital admissions caused by unintentional and deliberate injuries in young people (aged 15-24) | 2011/12 | 136.9       | 144.7      | 71.6        |       | 278.7        |
| 2.08 Emotional well-being of looked after children  | 2011/12 | 18.4        | 13.8       | 9.5         |       | 20.1         |
| 2.13i Percentage of physically active and inactive adults - active adults                               | 2012    | 48.9        | 56.0       | 43.8        |       | 68.5         |
| 2.13ii Percentage of active and inactive adults - inactive adults                                       | 2012    | 35.1        | 28.5       | 18.2        |       | 40.2         |
| 2.14 Smoking prevalence - adults (over 18s)   | 2011/12 | 23.0        | 20.0       | 13.2        |       | 29.3         |
| 2.15i Successful completion of drug treatment - opiate users  | 2011    | 12.6        | 8.6        | 4.3         |       | 19.9         |
| 2.15ii Successful completion of drug treatment - non-opiate users                                       | 2011    | 61.7        | 39.5       | 19.7        |       | 69.0         |
| 2.17 Recorded diabetes  | 2011/12 | 6.42        | 5.76       | 3.60        |       | 8.02         |
| 2.20i Cancer screening coverage - breast cancer   | 2012    | 68.9        | 76.9       | 59.4        |       | 85.1         |
| 2.20ii Cancer screening coverage - cervical cancer  | 2012    | 70.9        | 75.3       | 60.3        |       | 81.4         |
| 2.21vii Access to non-cancer screening programmes - diabetic retinopathy                                | 2011/12 | 76.0        | 80.9       | 66.7        |       | 95.0         |
| 2.22i Take up of NHS Health Check Programme by those eligible - health check offered                    | 2012/13 | 31.0        | 16.5       | 0.7         |       | 42.5         |
| 2.22ii Take up of NHS Health Check programme by those eligible - health check take up                   | 2012/13 | 32.4        | 49.1       | 7.7         |       | 100.0        |
| 2.23i Self-reported well-being - people with a low satisfaction score                                   | 2011/12 | 26.9        | 24.3       | 14.6        |       | 30.5         |
| 2.23ii Self-reported well-being - people with a low worthwhile score                                    | 2011/12 | 21.6        | 20.1       | 12.8        |       | 25.4         |
| 2.23iii Self-reported well-being - people with a low happiness score                                    | 2011/12 | 30.2        | 29.0       | 19.2        |       | 36.6         |
| 2.23iv Self-reported well-being - people with a high anxiety score                                      | 2011/12 | 43.5        | 40.1       | 34.4        |       | 48.3         |
| 2.24i Injuries due to falls in people aged 65 and over (Persons)  | 2011/12 | 2,088       | 1,665      | 1,070       |       | 2,985        |
| 2.24i Injuries due to falls in people aged 65 and over (males/females) - Male                           | 2011/12 | 1,619       | 1,302      | 704         |       | 2,535        |
| 2.24i Injuries due to falls in people aged 65 and over (males/females) - Female                         | 2011/12 | 2,558       | 2,028      | 1,298       |       | 3,713        |
| 2.24ii Injuries due to falls in people aged 65 and over - aged 65-79                                    | 2011/12 | 1,161       | 941        | 545         |       | 1,726        |
| 2.24iii Injuries due to falls in people aged 65 and over - aged 80+                                     | 2011/12 | 6,259       | 4,924      | 2,892       |       | 8,965        |

**2.01-** % of all live births at term with low birth weight **2.02i-** % of all mothers who breastfed their babies in the first 48hrs after delivery **2.02ii-** % of all infants due a 6-8 week check that are totally or partially breastfed **2.03-** % of women who smoke at time of delivery **2.04-** Rate of conceptions per 1,000 females aged 15-17 **2.06i-** % of children aged 4-5 classified as overweight or obese **2.06ii-** % of children aged 10-11 classified as overweight or obese **2.07i-** Rate of hospital admissions caused by unintentional and deliberate injuries in children aged 0-14 years per 10,000 resident population **2.07ii-** Rate of hospital admissions caused by unintentional and deliberate injuries in young people aged 15-24 per 10,000 resident population **2.08-** Average difficulties score for all looked after children aged 4-16 who have been in care for at least 12 months on 31st March **2.13i-** Percentage of adults achieving at least 150 minutes of physical activity per week in accordance with UK CMO recommended guidelines on physical activity. **2.13ii-** The percentage of adults classified as "inactive" **2.14-** Prevalence of smoking among people aged 18+ **2.15i-** % of opiate drug users that left drug treatment successfully who do not re-present to treatment within 6 months **2.15ii-** % of non-opiate drug users that left treatment successfully who do not re-present to treatment within 6 months **2.17-** % of QOF-recorded cases of diabetes registered with GP practices aged 17+ **2.20i-** % of eligible women screened adequately within the previous 3 years on 31st March **2.20ii-** % of eligible women screened adequately within the previous 3.5 or 5.5 years (according to age) on 31st March **2.21vii-** % of those offered diabetic eye screening who attend a digital screening event **2.22i-** % of eligible population aged 40-74 offered an NHS Health Check **2.22ii-** % of eligible population aged 40-74 offered an NHS Health Check who received an NHS Health Check **2.23i-** % of respondents scoring 0-6 to the question "Overall, how satisfied are you with your life nowadays?" **2.23ii-** % of respondents scoring 0-6 to the question "Overall, to what extent do you feel the things you do in your life are worthwhile?" **2.23iii-** % of respondents scoring 0-6 to the question "Overall, how happy did you feel yesterday?" **2.23iv-** % of respondents scoring 4-10 to the question "Overall, how anxious did you feel yesterday?" **2.24i-** Age-sex standardised rate of emergency hospital admissions for injuries due to falls in persons aged 65+ per 100,000 population **2.24i-** Age standardised rate of emergency hospital admissions for injuries due to falls in males/females aged 65+ per 100,000 population **2.24i-** Age standardised rate of emergency hospital admissions for injuries due to falls in males/females aged 65+ per 100,000 population **2.24ii-** Age-sex standardised rate of emergency hospital admissions for injuries due to falls in persons aged 65-79 per 100,000 population **2.24iii-** Age-sex standardised rate of emergency hospital admissions for injuries due to falls in persons aged 80+ per 100,000 population

## Barking and Dagenham

| Health protection  | Period    | Local value | Eng. value | Eng. lowest | Range | Eng. highest |
|--|-----------|-------------|------------|-------------|-------|--------------|
| 3.01 Fraction of mortality attributable to particulate air pollution                           | 2010      | 7.10        | 5.60       | 3.60        |       | 8.30         |
| 3.02i Chlamydia diagnoses (15-24 year olds) - Old NCSP data                                    | 2011      | 2,307       | 2,125      | 783         |       | 5,995        |
| 3.02ii Chlamydia diagnoses (15-24 year olds) - CTAD  | 2012      | 2,331       | 1,979      | 703         |       | 6,132        |
| 3.03i Population vaccination coverage - Hepatitis B (1 year old)                               | 2011/12   | 92          | -          | 9           |       | 100          |
| 3.03i Population vaccination coverage - Hepatitis B (2 years old)                              | 2011/12   | -           | -          | 2.6         |       | 100.0        |
| 3.03iii Population vaccination coverage - Dtap / IPV / Hib (1 year old)                        | 2011/12   | 91.5        | 94.7       | 84.9        |       | 98.8         |
| 3.03iii Population vaccination coverage - Dtap / IPV / Hib (2 years old)                       | 2011/12   | 91.5        | 96.1       | 85.7        |       | 98.8         |
| 3.03iv Population vaccination coverage - MenC  | 2011/12   | 89.1        | 93.9       | 81.4        |       | 98.6         |
| 3.03v Population vaccination coverage - PCV  | 2011/12   | 89.3        | 94.2       | 83.8        |       | 98.6         |
| 3.03vi Population vaccination coverage - Hib / MenC booster (2 years old)                      | 2011/12   | 86.4        | 92.3       | 75.7        |       | 97.3         |
| 3.03vi Population vaccination coverage - Hib / Men C booster (5 years)                         | 2011/12   | 81.0        | 88.6       | 0.0         |       | 97.6         |
| 3.03vii Population vaccination coverage - PCV booster  | 2011/12   | 82.9        | 91.5       | 74.7        |       | 97.0         |
| 3.03viii Population vaccination coverage - MMR for one dose (2 years old)                      | 2011/12   | 85.7        | 91.2       | 78.7        |       | 97.2         |
| 3.03ix Population vaccination coverage - MMR for one dose (5 years old)                        | 2011/12   | 88.7        | 92.9       | 79.8        |       | 98.0         |
| 3.03x Population vaccination coverage - MMR for two doses (5 years old)                        | 2011/12   | 77.9        | 86.0       | 69.7        |       | 95.3         |
| 3.03xii Population vaccination coverage - HPV  | 2011/12   | 84.4        | 86.8       | 62.3        |       | 97.2         |
| 3.03xiii Population vaccination coverage - PPV   | 2011/12   | 57.5        | 68.3       | 52.8        |       | 76.6         |
| 3.03xiv Population vaccination coverage - Flu (aged 65+)                                       | 2011/12   | 72.3        | 74.0       | 64.8        |       | 81.5         |
| 3.03xv Population vaccination coverage - Flu (at risk individuals)                             | 2011/12   | 55.5        | 51.6       | 43.4        |       | 66.3         |
| 3.04 People presenting with HIV at a late stage of infection                                   | 2009 - 11 | 58.6        | 50.0       | 0.0         |       | 75.0         |
| 3.05i Treatment completion for TB  | 2011      | 91.3        | 84.3       | 55.6        |       | 98.3         |
| 3.05ii Treatment completion for TB - TB incidence  | 2009 - 11 | 37.3        | 15.4       | 1.1         |       | 137.0        |
| 3.06 Public sector organisations with a board approved sustainable development management plan | 2011/12   | 80          | 84         | 20          |       | 100          |

**3.01-** Fraction of all-cause adult mortality attributable to long-term exposure to current levels of anthropogenic particulate air pollution **3.02i-** Crude rate of chlamydia diagnoses per 100,000 young adults aged 15-24 using old NCSP data **3.02ii-** Crude rate of chlamydia diagnoses per 100,000 young adults aged 15-24 using CTAD data **3.03i-** % of eligible children who received 4 doses of Hepatitis B vaccine at any time by their 1st birthday **3.03ii-** % of eligible children who received 4 doses of Hepatitis B vaccine at any time by their 2nd birthday **3.03iii-** % of eligible children who received 3 doses of Dtap / IPV / Hib vaccine at any time by their 1st birthday **3.03iii-** % of eligible children who received 3 doses of Dtap / IPV / Hib vaccine at any time by their 2nd birthday **3.03iv-** % of eligible children who have received the completed course of Men C vaccine by their 1st birthday **3.03v-** % of eligible children who have received the complete course of PCV vaccine by their 1st birthday **3.03vi-** % of eligible children who have received one booster dose of Hib/Men C vaccine by their 2nd birthday **3.03vi-** % of eligible children who have received one booster dose of Hib/Men C vaccine by their 5th birthday **3.03vii-** % of eligible children who have received one booster dose of PCV vaccine by their 2nd birthday **3.03viii-** % of eligible children who have received one dose of MMR vaccine on or after their 1st birthday and anytime up to their 2nd birthday **3.03ix-** % of eligible children who have received one dose of MMR vaccine on or after their 1st birthday and at any time up to their 5th birthday **3.03x-** % of eligible children who have received two doses of MMR vaccine on or after their 1st birthday and at any time up to their 5th birthday **3.03xii-** % of girls aged 12-13 who have received all 3 doses of the HPV vaccine **3.03xiii-** % of eligible adults aged 65+ who have received the PPV vaccine **3.03xiv-** % of eligible adults aged 65+ who have received the flu vaccine **3.03xv-** % of at risk individuals aged 6 months to 65 years (excluding pregnant women) who have received the flu vaccine **3.04-** % of adults (aged 15+) newly diagnosed with HIV with a CD4 count <350 cells per mm<sup>3</sup> **3.05i-** % of people completing treatment for TB within 12 months prior to 31st December **3.05ii-** Rate of reported new cases of TB per year per 100,000 population **3.06-** % of NHS organisations with a board approved sustainable development management plan

## How to interpret the spine charts

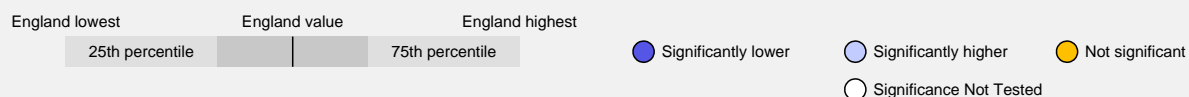
England lowest      England value      England highest

Significantly lower      Significantly higher      Not significant  
 Significance Not Tested

| Healthcare and premature mortality   | Period    | Local value | Eng. value | Eng. lowest | Range | Eng. highest |
|--|-----------|-------------|------------|-------------|-------|--------------|
| 4.01 Infant mortality  | 2009 - 11 | 4.62        | 4.29       | 2.28        |       | 8.02         |
| 4.03 Mortality rate from causes considered preventable (provisional)                             | 2009 - 11 | 182.9       | 146.1      | 100.7       |       | 264.2        |
| 4.04i Under 75 mortality rate from all cardiovascular diseases (provisional)                     | 2009 - 11 | 81.7        | 60.9       | 39.5        |       | 113.3        |
| 4.04ii Under 75 mortality rate from cardiovascular diseases considered preventable (provisional) | 2009 - 11 | 56.2        | 40.6       | 23.0        |       | 75.1         |
| 4.05i Under 75 mortality rate from cancer (provisional)  | 2009 - 11 | 135.9       | 108.1      | 84.0        |       | 153.2        |
| 4.05ii Under 75 mortality rate from cancer considered preventable (provisional)                  | 2009 - 11 | 80.0        | 61.9       | 45.2        |       | 98.1         |
| 4.06i Under 75 mortality rate from liver disease (provisional)                                   | 2009 - 11 | 18.7        | 14.4       | 8.7         |       | 39.3         |
| 4.06ii Under 75 mortality rate from liver disease considered preventable (provisional)           | 2009 - 11 | 16.0        | 12.7       | 7.5         |       | 37.0         |
| 4.07i Under 75 mortality rate from respiratory disease (provisional)                             | 2009 - 11 | 36.9        | 23.4       | 13.7        |       | 62.0         |
| 4.07ii Under 75 mortality rate from respiratory disease considered preventable (provisional)     | 2009 - 11 | 20.8        | 11.6       | 5.3         |       | 28.6         |
| 4.08 Mortality from communicable diseases (provisional)  | 2009 - 11 | 39.3        | 29.9       | 22.0        |       | 54.9         |
| 4.10 Suicide rate (provisional)  | 2009 - 11 | 5.8         | 7.9        | 4.3         |       | 13.9         |
| 4.11 Emergency readmissions within 30 days of discharge from hospital                            | 2010/11   | 12.8        | 11.8       | 8.1         |       | 13.8         |
| 4.11 Emergency readmissions within 30 days of discharge from hospital - Male                     | 2010/11   | 12.6        | 12.1       | 8.6         |       | 14.8         |
| 4.11 Emergency readmissions within 30 days of discharge from hospital - Female                   | 2010/11   | 12.9        | 11.4       | 7.2         |       | 13.2         |
| 4.12i Preventable sight loss - age related macular degeneration (AMD)                            | 2011/12   | 139.6       | 110.5      | 12.8        |       | 225.2        |
| 4.12ii Preventable sight loss - glaucoma   | 2011/12   | 15.7        | 12.8       | 3.0         |       | 34.5         |
| 4.12iii Preventable sight loss - diabetic eye disease  | 2011/12   | 3.4         | 3.8        | 0.9         |       | 15.8         |
| 4.12iv Preventable sight loss - sight loss certifications  | 2011/12   | 40.6        | 44.5       | 5.1         |       | 82.5         |
| 4.14i Hip fractures in people aged 65 and over   | 2011/12   | 514.5       | 457.2      | 337.9       |       | 599.5        |
| 4.14ii Hip fractures in people aged 65 and over - aged 65-79                                     | 2011/12   | 240.7       | 222.2      | 135.7       |       | 346.7        |
| 4.14iii Hip fractures in people aged 65 and over - aged 80+                                      | 2011/12   | 1,747       | 1,515      | 993         |       | 2,021        |

**4.01-** Rate of deaths in infants aged under 1 year per 1,000 live births **4.03-** Age-standardised rate of mortality from causes considered preventable per 100,000 population (provisional) **4.04i-** Age-standardised rate of mortality from all cardiovascular diseases (including heart disease and stroke) in persons less than 75 years of age per 100,000 population (provisional) **4.04ii-** Age-standardised rate of mortality considered preventable from all cardiovascular diseases (incl. heart disease and stroke) in those aged <75 per 100,000 population (provisional) **4.05i-** Age-standardised rate of mortality from all cancers in persons less than 75 years of age per 100,000 population (provisional) **4.05ii-** Age-standardised rate of mortality considered preventable from all cancers in those aged <75 per 100,000 population (provisional) **4.06i-** Age-standardised rate of mortality from liver disease in persons less than 75 years of age per 100,000 population (provisional) **4.06ii-** Age-standardised rate of mortality considered preventable from liver disease in those aged <75 per 100,000 population (provisional) **4.07i-** Age-standardised rate of mortality from respiratory disease in persons less than 75 years per 100,000 population (provisional) **4.07ii-** Age-standardised rate of mortality considered preventable from respiratory disease in those aged <75 per 100,000 population (provisional) **4.08-** Age-standardised rate of mortality from communicable diseases per 100,000 population (provisional) **4.10-** Age-standardised mortality rate from suicide and injury of undetermined intent per 100,000 population (provisional) **4.11-** Indirectly standardised % of emergency admissions to any hospital within 30 days of the previous discharge from hospital **4.11-** Indirectly standardised % of emergency admissions to any hospital within 30 days of the previous discharge from hospital **4.11-** Indirectly standardised % of emergency admissions to any hospital within 30 days of the previous discharge from hospital **4.12i-** Crude rate of sight loss due to age related macular degeneration (AMD) in those aged 65+ per 100,000 population **4.12ii-** Crude rate of sight loss due to glaucoma in those aged 40+ per 100,000 population **4.12iii-** Crude rate of sight loss due to diabetic eye disease in those aged 12+ per 100,000 population **4.12iv-** Crude rate of sight loss certifications per 100,000 population **4.14i-** Age-sex standardised rate of emergency admissions for fractured neck of femur in those aged 65+ per 100,000 population **4.14ii-** Age-sex standardised rate of emergency admissions for fractured neck of femur in those aged 65-79 per 100,000 population **4.14iii-** Age-sex standardised rate of emergency admissions for fractured neck of femur in those aged 80+ per 100,000 population

### How to interpret the spine charts

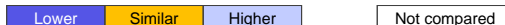


# Tartan Rugs

## Wider determinants of health

| Indicator  | Period              | England | Local Authorities    |        |        |       |         |        |                |         |        |         |           |         |                        |          |        |          |            |          |           |                        |                      |         |          |        |        |           |                      |           |        |               |                |            |             |  |
|--|---------------------|---------|----------------------|--------|--------|-------|---------|--------|----------------|---------|--------|---------|-----------|---------|------------------------|----------|--------|----------|------------|----------|-----------|------------------------|----------------------|---------|----------|--------|--------|-----------|----------------------|-----------|--------|---------------|----------------|------------|-------------|--|
|  |                     |         | Barking and Dagenham | Barnet | Bexley | Brent | Bromley | Camden | City of London | Croydon | Ealing | Enfield | Greenwich | Hackney | Hammersmith and Fulham | Haringey | Harrow | Havering | Hillingdon | Hounslow | Islington | Kensington and Chelsea | Kingston upon Thames | Lambeth | Lewisham | Merton | Newham | Redbridge | Richmond upon Thames | Southwark | Sutton | Tower Hamlets | Waltham Forest | Wandsworth | Westminster |  |
| 1.01 Children in poverty   | 2010                | 21.1    | 35.3                 | 21.2   | 20.0   | 29.5  | 17.5    | 34.2   | 18.7           | 25.7    | 26.1   | 33.7    | 30.9      | 36.6    | 31.1                   | 33.0     | 21.2   | 20.1     | 23.7       | 25.6     | 40.9      | 25.1                   | 15.0                 | 32.7    | 31.7     | 18.3   | 34.3   | 25.0      | 10.5                 | 31.4      | 17.4   | 45.9          | 30.4           | 22.4       | 36.0        |  |
| 1.03 Pupil absence   | 2011/12             | 5.11    | 4.75                 | 4.91   | 4.55   | 4.85  | 4.87    | 5.13   | 1.96           | 4.87    | 4.55   | 5.03    | 4.64      | 4.68    | 4.91                   | 4.97     | 4.80   | 5.13     | 4.76       | 4.67     | 5.17      | 4.72                   | 4.36                 | 4.72    | 4.83     | 5.01   | 5.03   | 4.76      | 4.57                 | 4.84      | 4.84   | 4.66          | 5.01           | 4.84       | 4.41        |  |
| 1.04i First time entrants to the youth justice system  | 2012                | 537     | 491                  | 408    | 491    | 722   | 356     | 651    | -              | 663     | 453    | 636     | 815       | 555     | 793                    | 690      | 330    | 419      | 595        | 517      | 824       | 659                    | 388                  | 866     | 812      | 489    | 740    | 452       | 302                  | 652       | 388    | 809           | 566            | 570        | 793         |  |
| 1.05 16-18 year olds not in education employment or training   | 2012                | 5.8     | 5.4                  | 3.5    | 4.0    | 2.4   | 4.1     | 10.2   | 0.3            | 4.4     | 3.3    | 4.2     | 6.9       | 7.0     | 3.9                    | 3.7      | 2.0    | 4.7      | 3.6        | 4.4      | 8.8       | 8.6                    | 3.6                  | 7.5     | 3.0      | 4.0    | 5.3    | 3.6       | 3.9                  | 7.7       | 3.9    | 4.9           | 3.7            | 7.1        | 7.5         |  |
| 1.06i Adults with a learning disability who live in stable and appropriate accommodation                         | 2011/12             | 70.0    | 87.6                 | 49.2   | 76.8   | 73.2  | 57.8    | 78.9   | 85.7           | 72.9    | 61.7   | 78.2    | 66.1      | 76.3    | 65.1                   | 47.2     | 71.2   | 51.4     | 65.9       | 37.5     | 74.8      | 67.3                   | 72.3                 | 66.9    | 78.1     | 71.5   | 56.8   | 74.7      | 67.1                 | 66.3      | 68.4   | 43.0          | 47.1           | 68.0       | 74.7        |  |
| 1.06ii Adults in contact with secondary mental health services who live in stable and appropriate accommodation  | 2010/11             | 66.8    | 86.0                 | 65.7   | 72.7   | 59.6  | 75.6    | 67.4   | 54.6           | 68.8    | 76.1   | 61.6    | 76.3      | 67.5    | 83.4                   | 60.3     | 72.0   | 92.8     | 77.7       | 85.6     | 67.5      | 68.3                   | 86.3                 | 60.4    | 69.1     | 82.5   | 82.2   | 82.0      | 89.0                 | 68.7      | 84.5   | 83.9          | 77.3           | 83.7       | 24.6        |  |
| 1.08i Gap in the employment rate between those with a long-term health condition and the overall employment rate | 2012                | 7.1     | 17.3                 | 2.0    | 3.0    | 14.5  | -0.7    | 10.6   | -              | 10.2    | 8.2    | 8.6     | 8.8       | 11.8    | 9.6                    | 10.9     | 5.5    | 3.2      | 2.0        | 7.3      | 7.1       | 2.0                    | 3.0                  | 9.0     | 21.7     | 5.0    | 17.7   | 6.6       | 13.2                 | 12.4      | 9.8    | 15.1          | 4.2            | 9.0        | 19.2        |  |
| 1.08ii Gap in the employment rate between those with a learning disability and the overall employment rate       | 2011/12             | 63.2    | 57.8                 | 58.9   | 52.1   | 57.4  | 56.2    | 53.1   | -              | 60.7    | 55.3   | 48.5    | 62.8      | 60.1    | 61.3                   | 60.6     | 56.4   | 66.3     | 65.2       | 64.6     | 57.1      | 54.1                   | 46.7                 | 66.8    | 58.6     | 62.6   | 54.3   | 52.2      | 58.4                 | 56.8      | 65.4   | 58.0          | 61.5           | 69.1       | 57.2        |  |
| 1.09i Sickness absence - The percentage of employees who had at least one day off in the previous week           | 2009 - 11           | 2.2     | 2.2                  | 0.9    | 3.5    | 1.0   | 2.4     | 2.0    | 16.2           | 3.4     | 3.0    | 1.7     | 2.6       | 2.4     | 1.7                    | 2.0      | 1.0    | 2.0      | 2.6        | 2.2      | 2.6       | 1.8                    | 2.5                  | 1.9     | 2.6      | 2.9    | 1.6    | 1.6       | 1.6                  | 2.0       | 2.6    | 2.1           | 1.1            | 2.2        | 2.3         |  |
| 1.09ii Sickness absence - The percent of working days lost due to sickness absence                               | 2009 - 11           | 1.5     | 1.5                  | 0.6    | 2.1    | 0.3   | 1.4     | 1.0    | 15.9           | 1.9     | 2.0    | 0.9     | 1.8       | 0.9     | 1.3                    | 0.8      | 0.6    | 0.9      | 1.9        | 1.1      | 1.2       | 1.1                    | 1.7                  | 0.8     | 1.6      | 1.8    | 1.0    | 1.2       | 1.1                  | 0.9       | 1.8    | 1.4           | 0.5            | 1.1        | 1.0         |  |
| 1.10 Killed and seriously injured casualties on England's roads  | 2009 - 11           | 41.9    | 25.9                 | 38.9   | 28.8   | 28.1  | 32.2    | 54.8   | 617.8          | 28.2    | 27.6   | 31.7    | 39.7      | 43.3    | 45.0                   | 33.6     | 17.5   | 29.9     | 30.3       | 36.2     | 43.0      | 53.2                   | 29.8                 | 55.8    | 39.4     | 23.4   | 27.6   | 26.8      | 35.2                 | 49.1      | 26.6   | 40.1          | 25.7           | 36.8       | 93.2        |  |
| 1.12i Violent crime (including sexual violence) - hospital admissions for violence                               | 2009/10 - 11/12     | 67.7    | 94.8                 | 45.1   | 43.1   | 78.1  | 38.9    | 54.8   | 27.6           | 70.8    | 88.7   | 58.2    | 63.5      | 96.7    | 99.9                   | 89.2     | 41.3   | 63.0     | 65.2       | 75.2     | 88.7      | 55.8                   | 20.9                 | 114.0   | 82.8     | 57.3   | 144.9  | 79.4      | 29.0                 | 103.5     | 50.8   | 76.2          | 127.9          | 67.6       | 53.2        |  |
| 1.12ii Violent crime (including sexual violence) - violence offences   | 2011/12             | 13.6    | 22.9                 | 11.9   | 11.9   | 28.4  | 14.6    | 23.6   | 59.4           | 19.3    | 22.4   | 14.0    | 23.2      | 24.6    | 25.6                   | 20.8     | 12.5   | 13.9     | 20.2       | 23.5     | 26.2      | 16.2                   | 13.1                 | 25.0    | 23.5     | 12.1   | 26.7   | 14.3      | 10.4                 | 23.0      | 12.6   | 24.5          | 21.7           | 14.1       | 32.7        |  |
| 1.13i Re-offending levels - percentage of offenders who re-offend  | 2010                | 26.8    | 27.4                 | 23.0   | 23.7   | 27.9  | 21.6    | 29.1   | 26.0           | 29.1    | 26.1   | 25.3    | 27.3      | 26.4    | 30.7                   | 28.1     | 21.3   | 21.0     | 24.7       | 24.8     | 32.2      | 26.2                   | 23.7                 | 29.2    | 29.1     | 25.0   | 27.3   | 26.3      | 20.6                 | 26.4      | 23.9   | 28.9          | 26.9           | 25.9       | 25.8        |  |
| 1.13ii Re-offending levels - average number of re-offences per offender  | 2010                | 0.77    | 0.72                 | 0.59   | 0.58   | 0.76  | 0.54    | 0.88   | 0.62           | 0.84    | 0.74   | 0.65    | 0.72      | 0.75    | 0.89                   | 0.77     | 0.57   | 0.52     | 0.68       | 0.73     | 0.94      | 0.70                   | 0.60                 | 0.79    | 0.79     | 0.67   | 0.78   | 0.72      | 0.60                 | 0.68      | 0.61   | 0.77          | 0.72           | 0.72       | 0.83        |  |
| 1.14i The percentage of the population affected by noise - Number of complaints about noise                      | 2011/12             | 7.5     | 26.8                 | 6.6    | 5.8    | 6.5   | 11.8    | 20.4   | 116.0          | 11.0    | 2.6    | 9.7     | 11.6      | 20.1    | 6.8                    | 31.6     | 7.3    | 5.2      | 6.6        | 16.8     | 21.2      | 31.1                   | 9.8                  | 29.3    | 18.2     | 10.6   | 23.2   | 11.5      | 7.8                  | 28.5      | 9.4    | 24.2          | 31.0           | 14.3       | 58.4        |  |
| 1.15i Statutory homelessness - homelessness acceptances  | 2011/12             | 2.3     | 2.9                  | 2.5    | 3.7    | 4.9   | 4.8     | 1.3    | 2.4            | 5.8     | 3.4    | 2.2     | 1.9       | 7.6     | 2.7                    | 5.8      | 1.3    | 2.4      | 1.1        | 4.8      | 4.7       | 6.3                    | 2.6                  | 7.6     | 4.9      | 1.2    | 2.7    | 4.0       | 3.1                  | 4.2       | 2.0    | 4.3           | 6.6            | 4.7        | 4.7         |  |
| 1.15ii Statutory homelessness - households in temporary accommodation  | 2011/12             | 2.3     | 16.0                 | 16.2   | 3.3    | 32.4  | 4.6     | 6.5    | 1.7            | 12.0    | 7.4    | 16.7    | 2.4       | 14.6    | 13.5                   | 30.0     | 4.7    | 5.5      | 5.9        | 8.1      | 10.9      | 16.1                   | 7.3                  | 9.7     | 9.5      | 1.0    | 24.5   | 20.8      | 3.1                  | 5.4       | 3.1    | 19.3          | 14.4           | 3.9        | 16.0        |  |
| 1.16 Utilisation of outdoor space for exercise/health reasons  | Mar 2009 - Feb 2012 | 14.0    | 2.5                  | 9.2    | 10.7   | 7.2   | 4.4     | 21.1   | -              | 21.6    | 6.6    | 9.9     | 10.2      | -       | 10.7                   | 18.4     | 15.2   | -        | -          | 6.4      | 4.1       | -                      | 13.3                 | 10.6    | 6.0      | 4.7    | 6.1    | 3.3       | -                    | 6.9       | 11.4   | 4.5           | 5.1            | 14.8       | 10.5        |  |
| 1.18i Social Isolation: % of adult social care users who have as much social contact as they would like          | 2011/12             | 42.3    | 35.9                 | 37.8   | 48.9   | 40.5  | 40.6    | 39.1   | 48.8           | 37.6    | 33.7   | 39.4    | 44.7      | 41.9    | 34.9                   | 37.4     | 32.2   | 38.2     | 34.6       | 41.4     | 39.8      | 38.7                   | 38.9                 | 38.7    | 37.6     | 37.1   | 41.0   | 45.8      | 40.9                 | 38.3      | 40.9   | 38.3          | 40.3           | 45.8       | 37.0        |  |

Comparison with respect to England value:





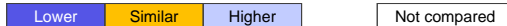
# Health improvement

| Indicator   | Period  | England | London               |        |        |       |         |        |                |         |        |         |           |         |                        |          |        |          |            |          |         |                        |                      |         |          |        |        |           |                      |           |        |               |                |            |             |      |
|---|---------|---------|----------------------|--------|--------|-------|---------|--------|----------------|---------|--------|---------|-----------|---------|------------------------|----------|--------|----------|------------|----------|---------|------------------------|----------------------|---------|----------|--------|--------|-----------|----------------------|-----------|--------|---------------|----------------|------------|-------------|------|
|   |         |         | Barking and Dagenham | Barnet | Bexley | Brent | Bromley | Camden | City of London | Croydon | Ealing | Enfield | Greenwich | Hackney | Hammersmith and Fulham | Haringey | Harrow | Havering | Hillingdon | Hounslow | Ipswich | Kensington and Chelsea | Kingston upon Thames | Lambeth | Lewisham | Merton | Newham | Redbridge | Richmond upon Thames | Southwark | Sutton | Tower Hamlets | Waltham Forest | Wandsworth | Westminster |      |
| 2.01 Low birth weight of term babies  | 2010    | 2.85    | 3.31                 | 2.78   | 2.12   | 3.53  | 2.02    | 3.60   | -              | 3.12    | 2.87   | 3.36    | 2.58      | 2.85    | 2.80                   | 2.69     | 4.47   | 2.60     | 3.45       | 3.49     | 2.22    | 1.98                   | 2.91                 | 3.04    | 2.85     | 2.33   | 4.79   | 3.77      | 2.25                 | 2.69      | 2.65   | 4.52          | 4.15           | 2.47       | 1.88        |      |
| 2.02i Breastfeeding - Breastfeeding initiation  | 2011/12 | 74.0    | -                    | 90.7   | 70.8   | 88.0  | 83.6    | 91.0   | -              | 87.0    | 89.5   | 90.3    | 79.7      | 91.3    | 91.3                   | 94.3     | 85.4   | 71.1     | 83.3       | 84.5     | 89.9    | -                      | 89.4                 | 91.8    | 86.4     | 81.6   | 88.7   | 87.5      | 89.6                 | 89.7      | 81.6   | 88.3          | 89.8           | 93.1       | 88.0        |      |
| 2.02ii Breastfeeding - Breastfeeding prevalence at 6-8 weeks after birth                                | 2011/12 | 47.2    | 54.5                 | 75.4   | 48.4   | 74.1  | 57.2    | 76.3   | -              | 67.3    | 65.0   | -       | 62.8      | 82.8    | 79.0                   | 71.9     | 73.3   | -        | 60.4       | -        | 75.0    | -                      | 71.6                 | -       | 75.7     | 61.5   | -      | 65.8      | -                    | 77.4      | 61.5   | 71.1          | -              | 72.8       | -           |      |
| 2.03 Smoking status at time of delivery   | 2011/12 | 13.2    | -                    | 5.2    | 10.2   | 3.1   | 6.1     | 5.3    | -              | 8.0     | 3.7    | 6.0     | 9.1       | 6.3     | 4.2                    | 4.8      | 4.0    | 14.8     | 8.3        | 4.9      | 9.1     | -                      | 5.6                  | 4.6     | 7.5      | 6.6    | 5.5    | 5.2       | 3.2                  | 4.4       | 6.6    | 3.9           | 6.6            | 4.2        | 2.9         |      |
| 2.04 Under 18 conceptions   | 2011    | 30.7    | 46.3                 | 13.8   | 28.4   | 22.5  | 26.3    | 18.9   | -              | 32.8    | 25.7   | 25.8    | 38.1      | 30.7    | 32.8                   | 36.2     | 16.5   | 28.0     | 27.9       | 30.0     | 34.4    | 24.7                   | 22.1                 | 34.8    | 39.9     | 27.6   | 26.9   | 25.5      | 19.8                 | 42.7      | 30.5   | 28.5          | 31.2           | 29.4       | 23.2        |      |
| 2.06i Excess weight in 4-5 and 10-11 year olds - 4-5 year olds  | 2011/12 | 22.6    | 26.7                 | 21.0   | 25.0   | 22.6  | 20.3    | 24.2   | -              | 24.2    | 23.5   | 26.8    | 27.8      | 27.3    | 24.7                   | 24.1     | 21.4   | 23.6     | 20.9       | 22.6     | 23.6    | 21.3                   | 16.4                 | 22.7    | 24.8     | 21.3   | 23.5   | 24.5      | 17.6                 | 25.8      | 20.3   | 23.9          | 21.7           | 22.6       | 23.5        |      |
| 2.06ii Excess weight in 4-5 and 10-11 year olds - 10-11 year olds                                       | 2011/12 | 33.9    | 42.2                 | 34.0   | 37.5   | 37.3  | 31.3    | 36.8   | -              | 38.2    | 36.8   | 39.7    | 41.4      | 42.8    | 40.2                   | 38.8     | 35.8   | 35.5     | 35.3       | 38.9     | 38.1    | 38.3                   | 27.5                 | 38.8    | 40.4     | 33.9   | 39.8   | 38.1      | 26.6                 | 42.7      | 33.2   | 40.2          | 38.2           | 35.3       | 40.3        |      |
| 2.07i Hospital admissions caused by unintentional and deliberate injuries in children (aged 0-14 years) | 2011/12 | 118.2   | 88.9                 | 68.7   | 93.4   | 84.6  | 83.9    | 82.6   | -              | 101.2   | 85.1   | 84.7    | 83.7      | 122.9   | 92.9                   | 82.3     | 91.6   | 103.6    | 112.2      | 81.3     | 94.9    | 79.4                   | 102.6                | 107.1   | 85.8     | 101.5  | 80.8   | 87.4      | 97.8                 | 113.9     | 120.4  | 106.6         | 103.5          | 99.2       | 82.7        |      |
| 2.07ii Hospital admissions caused by unintentional and deliberate injuries in young people (aged 15-24) | 2011/12 | 144.7   | 136.9                | 104.3  | 98.4   | 94.5  | 117.8   | 85.9   | -              | 121.7   | 123.7  | 81.5    | 100.6     | 97.0    | 118.6                  | 100.9    | 83.4   | 117.5    | 135.6      | 133.3    | 100.5   | 106.2                  | 73.2                 | 130.9   | 123.5    | 114.1  | 112.9  | 112.8     | 117.1                | 127.4     | 109.7  | 99.5          | 147.4          | 111.0      | 103.2       |      |
| 2.08 Emotional well-being of looked after children  | 2011/12 | 13.8    | 18.4                 | 13.9   | 14.2   | 20.1  | 13.7    | 14.1   | -              | 11.5    | 13.5   | 12.1    | 12.0      | 14.3    | 10.9                   | 11.0     | 17.1   | 14.5     | 12.7       | 13.4     | 14.2    | 13.8                   | 13.7                 | 15.1    | 13.5     | 11.4   | 9.5    | 11.9      | 13.1                 | 13.9      | 17.1   | 13.2          | 13.8           | 14.9       | 13.4        |      |
| 2.13i Percentage of physically active and inactive adults - active adults                               | 2012    | 56.0    | 48.9                 | 56.0   | 51.4   | 52.3  | 62.1    | 55.9   | 62.3           | 56.8    | 52.3   | 59.3    | 53.0      | 58.1    | 64.9                   | 60.7     | 54.5   | 55.3     | 56.4       | 54.5     | 62.0    | 65.3                   | 56.4                 | 63.5    | 54.3     | 54.4   | 51.4   | 53.5      | 67.6                 | 58.7      | 62.0   | 55.1          | 58.0           | 65.0       | 55.0        |      |
| 2.13ii Percentage of active and inactive adults - inactive adults                                       | 2012    | 28.5    | 35.1                 | 26.1   | 30.7   | 30.1  | 24.1    | 29.3   | 24.2           | 29.8    | 29.1   | 26.3    | 33.1      | 30.2    | 20.8                   | 26.4     | 24.8   | 30.5     | 29.8       | 29.3     | 20.1    | 20.7                   | 22.8                 | 21.7    | 29.2     | 31.6   | 35.1   | 29.5      | 20.0                 | 26.3      | 23.2   | 28.6          | 28.4           | 22.8       | 28.4        |      |
| 2.14 Smoking prevalence - adults (over 18s)   | 2011/12 | 20.0    | 23.0                 | 17.5   | 19.3   | 18.2  | 18.1    | 17.3   | 41.7           | 19.7    | 20.1   | 18.5    | 17.9      | 25.2    | 20.7                   | 18.8     | 14.6   | 20.0     | 17.6       | 15.3     | 21.8    | 18.1                   | 18.3                 | 20.1    | 22.1     | 16.5   | 18.8   | 16.1      | 19.7                 | 17.5      | 17.7   | 21.5          | 19.4           | 18.2       | 21.5        |      |
| 2.15i Successful completion of drug treatment - opiate users  | 2011    | 8.6     | 12.6                 | 12.4   | 5.8    | 14.3  | 7.0     | 6.5    | -              | 10.5    | 13.3   | 6.3     | 9.2       | 9.0     | 7.4                    | 12.5     | 10.6   | 14.4     | 10.1       | 16.6     | 5.8     | 10.6                   | 11.9                 | 8.6     | 6.9      | 19.9   | 7.5    | 19.2      | 8.7                  | 7.5       | 16.9   | 9.6           | 12.8           | 8.5        | 7.0         |      |
| 2.15ii Successful completion of drug treatment - non-opiate users                                       | 2011    | 39.5    | 61.7                 | 30.9   | 46.3   | 42.7  | 50.7    | 25.1   | -              | 27.7    | 44.1   | 20.3    | 46.9      | 27.5    | 31.9                   | 30.0     | 51.0   | 42.4     | 46.3       | 43.5     | 31.4    | 32.2                   | 25.4                 | 26.8    | 24.5     | 48.8   | 26.6   | 63.9      | 41.5                 | 32.0      | 56.9   | 39.5          | 48.1           | 26.5       | 27.2        |      |
| 2.17 Recorded diabetes  | 2011/12 | 5.76    | 6.42                 | 5.76   | 6.31   | 7.71  | 5.10    | 3.76   | 2.67           | 6.10    | 6.59   | 6.76    | 5.57      | 5.35    | 4.25                   | 5.53     | 7.99   | 5.44     | 6.12       | 6.13     | 4.84    | 3.93                   | 4.75                 | 4.36    | 5.56     | 5.23   | 6.94   | 7.14      | 3.60                 | 4.51      | 5.44   | 5.98          | 5.93           | 4.23       | 4.08        |      |
| 2.20i Cancer screening coverage - breast cancer   | 2012    | 76.9    | 68.9                 | 69.1   | 76.7   | 67.5  | 75.6    | 60.6   | 61.2           | 70.8    | 68.0   | 72.1    | 67.9      | 63.9    | 61.8                   | 63.9     | 73.0   | 79.0     | 71.3       | 68.1     | 68.0    | 59.4                   | 73.1                 | 61.3    | 65.1     | 70.9   | 67.6   | 72.9      | 72.6                 | 63.6      | 74.6   | 65.4          | 71.6           | 65.4       | 61.7        |      |
| 2.20ii Cancer screening coverage - cervical cancer  | 2012    | 75.3    | 70.9                 | 67.5   | 78.2   | 69.2  | 77.8    | 62.4   | 58.5           | 73.8    | 66.1   | 74.3    | 71.7      | 68.3    | 60.3                   | 69.8     | 67.2   | 76.3     | 69.3       | 66.6     | 68.1    | 60.5                   | 72.0                 | 68.4    | 71.8     | 70.3   | 67.7   | 71.6      | 73.9                 | 69.6      | 74.5   | 66.6          | 71.6           | 69.2       | 62.2        |      |
| 2.21vii Access to non-cancer screening programmes - diabetic retinopathy                                | 2011/12 | 80.9    | 76.0                 | 82.0   | 84.6   | 79.8  | 84.7    | 67.9   | -              | 92.3    | 69.8   | 77.9    | 80.3      | 82.8    | 73.8                   | 71.6     | 77.1   | 84.6     | 76.2       | 72.2     | 69.2    | 80.3                   | 83.0                 | 77.0    | 81.3     | 80.3   | 75.2   | 81.5      | 86.9                 | 78.4      | 80.3   | 78.7          | 71.5           | 80.7       | 87.2        |      |
| 2.22i Take up of NHS Health Check Programme by those eligible - health check offered                    | 2012/13 | 16.5    | 31.0                 | 16.0   | 27.9   | 20.2  | 23.1    | 29.7   | -              | 20.0    | 22.3   | 16.1    | 24.0      | 20.7    | 16.4                   | 22.6     | 16.2   | 9.4      | 9.3        | 12.7     | 23.8    | 15.2                   | 14.3                 | 28.9    | 26.5     | 21.3   | 23.8   | 16.7      | 28.7                 | 26.7      | 21.3   | 19.2          | 13.2           | 28.0       | 21.5        |      |
| 2.22ii Take up of NHS Health Check programme by those eligible - health check take up                   | 2012/13 | 49.1    | 32.4                 | 25.9   | 44.4   | 61.7  | 39.1    | 29.7   | -              | 12.5    | 62.9   | 43.2    | 43.0      | 59.0    | 65.1                   | 51.6     | 46.7   | 73.1     | 56.1       | 64.3     | 70.2    | 7.7                    | 74.0                 | 24.0    | 34.3     | 55.3   | 56.5   | 52.3      | 34.0                 | 30.9      | 55.3   | 77.3          | 40.8           | 79.9       | 53.5        |      |
| 2.23i Self-reported well-being - people with a low satisfaction score                                   | 2011/12 | 24.3    | 26.9                 | 26.9   | 26.9   | 26.9  | 27.6    | 27.6   | 26.9           | 26.9    | 26.9   | 26.9    | 27.6      | 27.6    | 27.6                   | 26.9     | 26.9   | 26.9     | 26.9       | 26.9     | 27.6    | 27.6                   | 26.9                 | 27.6    | 27.6     | 26.9   | 27.6   | 26.9      | 26.9                 | 27.6      | 26.9   | 26.9          | 27.6           | 26.9       | 27.6        | 27.6 |
| 2.23ii Self-reported well-being - people with a low worthwhile score                                    | 2011/12 | 20.1    | 21.6                 | 21.6   | 21.6   | 21.6  | 24.2    | 24.2   | 21.6           | 21.6    | 21.6   | 21.6    | 24.2      | 24.2    | 24.2                   | 21.6     | 21.6   | 21.6     | 21.6       | 21.6     | 24.2    | 24.2                   | 21.6                 | 24.2    | 24.2     | 21.6   | 24.2   | 21.6      | 21.6                 | 24.2      | 21.6   | 24.2          | 21.6           | 24.2       | 24.2        | 24.2 |
| 2.23iii Self-reported well-being - people with a low happiness score                                    | 2011/12 | 29.0    | 30.2                 | 30.2   | 30.2   | 30.2  | 31.3    | 31.3   | 30.2           | 30.2    | 30.2   | 30.2    | 31.3      | 31.3    | 31.3                   | 30.2     | 30.2   | 30.2     | 30.2       | 31.3     | 31.3    | 30.2                   | 31.3                 | 31.3    | 30.2     | 31.3   | 30.2   | 31.3      | 30.2                 | 30.2      | 31.3   | 30.2          | 31.3           | 30.2       | 31.3        | 31.3 |
| 2.23iv Self-reported well-being - people with a high anxiety score                                      | 2011/12 | 40.1    | 43.5                 | 43.5   | 43.5   | 43.5  | 46.0    | 46.0   | 43.5           | 43.5    | 43.5   | 43.5    | 46.0      | 46.0    | 46.0                   | 43.5     | 43.5   | 43.5     | 43.5       | 46.0     | 46.0    | 43.5                   | 46.0                 | 46.0    | 43.5     | 46.0   | 43.5   | 43.5      | 46.0                 | 43.5      | 43.5   | 46.0          | 43.5           | 46.0       | 46.0        | 46.0 |
| 2.24i Injuries due to falls in people aged 65 and over (Persons)  | 2011/12 | 1,665   | 2,088                | 1,799  | 1,568  | 1,817 | 1,472   | 2,000  | -              | 1,955   | 2,303  | 1,246   | 1,356     | 1,881   | 2,720                  | 1,825    | 1,858  | 1,717    | 1,848      | 2,144    | 2,230   | 2,085                  | 1,368                | 2,097   | 1,875    | 1,833  | 1,866  | 2,050     | 1,655                | 2,283     | 1,921  | 2,013         | 2,229          | 2,130      | 1,967       |      |
| 2.24i Injuries due to falls in people aged 65 and over (males/females) - Male                           | 2011/12 | 1,302   | 1,619                | 1,387  | 1,156  | 1,879 | 1,218   | 1,961  | -              | 1,380   | 1,971  | 1,077   | 1,122     | 1,434   | 2,535                  | 1,305    | 1,466  | 1,524    | 1,489      | 1,861    | 1,742   | 1,696                  | 850                  | 1,946   | 1,676    | 1,422  | 1,483  | 1,724     | 1,216                | 1,982     | 1,497  | 1,710         | 2,050          | 1,935      | 1,560       |      |
| 2.24i Injuries due to falls in people aged 65 and over (males/females) - Female                         | 2011/12 | 2,028   | 2,558                | 2,212  | 1,980  | 1,756 | 1,727   | 2,040  | -              | 2,530   | 2,635  | 1,414   | 1,590     | 2,328   | 2,905                  | 2,345    | 2,249  | 1,910    | 2,208      | 2,426    | 2,718   | 2,474                  | 1,886                | 2,248   | 2,074    | 2,244  | 2,250  | 2,376     | 2,094                | 2,584     | 2,345  | 2,316         | 2,409          | 2,325      | 2,375       |      |
| 2.24ii Injuries due to falls in people aged 65 and over - aged 65-79                                    | 2011/12 | 941     | 1,161                | 980    | 860    | 1,061 | 786     | 1,164  | -              | 1,068   | 1,414  | 704     | 766       | 1,155   | 1,646                  | 1,037    | 1,043  | 873      | 945        | 1,234    | 1,396   | 1,378                  | 806                  | 1,355   | 1,023    | 1,034  | 1,170  | 1,089     | 890                  | 1,346     | 1,007  | 1,159         | 1,206          | 1,354      | 1,246       |      |
| 2.24iii Injuries due to falls in people aged 65 and over - aged 80+                                     | 2011/12 | 4,924   | 6,259                | 5,488  | 4,756  | 5,219 | 4,562   | 5,764  | -              | 5,945   | 6,301  | 3,681   | 4,012     | 5,146   | 7,553                  | 5,373    | 5,521  | 5,515    | 5,913      | 6,236    | 5,981   | 5,268                  | 3,896                | 5,433   | 5,714    | 5,428  | 4,997  | 6,375     | 5,098                | 6,496     | 6,035  | 5,855         | 6,836          | 5,621      | 5,214       |      |

# Health protection

| Indicator | Period  | England   | Barking and Dagenham | Barnet | Bexley | Brent | Bromley | Camden | City of London | Croydon | Ealing | Enfield | Greenwich | Hackney | Hammersmith and Fulham | Haringey | Harrow | Havering | Hillingdon | Hounslow | Ipswich | Kensington and Chelsea | Kingston upon Thames | Lambeth | Lewisham | Merton | Newham | Redbridge | Richmond upon Thames | Southwark | Sutton | Tower Hamlets | Waltham Forest | Wandsworth | Westminster |       |
|-----------|---|-----------|----------------------|--------|--------|-------|---------|--------|----------------|---------|--------|---------|-----------|---------|------------------------|----------|--------|----------|------------|----------|---------|------------------------|----------------------|---------|----------|--------|--------|-----------|----------------------|-----------|--------|---------------|----------------|------------|-------------|-------|
|           |   | 7.10      | 6.80                 | 6.60   | 7.20   | 6.30  | 7.70    | 9.00   | 6.50           | 7.20    | 6.60   | 7.20    | 7.80      | 7.90    | 7.10                   | 6.40     | 6.30   | 6.50     | 7.10       | 7.90     | 8.30    | 6.70                   | 7.70                 | 7.20    | 6.90     | 7.60   | 7.00   | 6.80      | 7.90                 | 6.40      | 8.10   | 7.30          | 7.30           | 8.30       |             |       |
| 3.01      | Fraction of mortality attributable to particulate air pollution                           | 2010      | 7.10                 | 6.80   | 6.60   | 7.20  | 6.30    | 7.70   | 9.00           | 6.50    | 7.20   | 6.60    | 7.20      | 7.80    | 7.90                   | 7.10     | 6.40   | 6.30     | 6.50       | 7.10     | 7.90    | 8.30                   | 6.70                 | 7.70    | 7.20     | 6.90   | 7.60   | 7.00      | 6.80                 | 7.90      | 6.40   | 8.10          | 7.30           | 7.30       | 8.30        |       |
| 3.02i     | Chlamydia diagnoses (15-24 year olds) - Old NCSP data                                     | 2011      | 2,125                | 2,307  | 1,492  | 1,160 | 2,579   | 1,779  | 1,594          | 464     | 3,450  | 1,655   | 1,714     | 2,833   | 4,272                  | 2,226    | 3,194  | 1,201    | 1,573      | 1,509    | 2,206   | 2,557                  | 2,031                | 1,648   | 5,995    | 4,762  | 1,988  | 2,728     | 1,650                | 1,502     | 4,819  | 2,001         | 1,637          | 2,639      | 3,089       | 1,647 |
| 3.02ii    | Chlamydia diagnoses (15-24 year olds) - CTAD  | 2012      | 1,979                | 2,331  | 1,264  | 1,208 | 2,090   | 1,300  | 2,701          | 1,080   | 2,615  | 1,212   | 1,063     | 2,497   | 3,158                  | 1,887    | 3,943  | 1,036    | 1,369      | 1,442    | 1,859   | 2,003                  | 1,682                | 1,770   | 6,132    | 4,179  | 1,628  | 1,871     | 1,286                | 1,308     | 3,306  | 1,758         | 1,479          | 1,932      | 2,787       | 1,620 |
| 3.03i     | Population vaccination coverage - Hepatitis B (1 year old)                                | 2011/12   | -                    | 92     | 100    | 100   | 73      | 100    | -              | -       | 100    | 92      | 72        | 96      | -                      | 67       | 95     | -        | 44         | 91       | 63      | 66                     | -                    | 50      | 100      | 100    | 85     | 100       | 33                   | 80        | 97     | 85            | 100            | 100        | 96          | -     |
| 3.03i     | Population vaccination coverage - Hepatitis B (2 years old)                               | 2011/12   | -                    | -      | -      | 91.7  | 20.2    | 75.0   | -              | -       | 100.0  | 68.0    | 90.0      | 74.5    | -                      | 60.0     | -      | -        | 75.0       | 71.4     | -       | 100.0                  | -                    | 33.3    | 100.0    | 98.1   | 90.9   | 87.5      | -                    | 20.0      | 85.7   | 90.9          | 90.9           | 90.7       | 100.0       | -     |
| 3.03iii   | Population vaccination coverage - Dtap / IPV / Hib (1 year old)                           | 2011/12   | 94.7                 | 91.5   | 95.3   | 93.4  | 94.6    | 95.1   | 89.7           | -       | 91.3   | 95.4    | 85.4      | 89.4    | 85.0                   | 88.8     | 92.4   | 96.4     | 94.5       | 95.6     | 93.5    | 95.6                   | 85.1                 | 93.5    | 89.7     | 87.8   | 84.9   | 87.3      | 92.1                 | 90.6      | 89.6   | 84.9          | 97.3           | 92.8       | 91.9        | 85.3  |
| 3.03iii   | Population vaccination coverage - Dtap / IPV / Hib (2 years old)                          | 2011/12   | 96.1                 | 91.5   | 96.9   | 95.7  | 95.4    | 96.4   | 94.0           | -       | 93.4   | 96.8    | 87.9      | 93.2    | 89.9                   | 92.8     | 91.6   | 95.5     | 94.4       | 96.5     | 94.7    | 96.4                   | 89.3                 | 96.1    | 92.9     | 92.8   | 90.0   | 90.8      | 93.4                 | 94.6      | 90.2   | 90.0          | 97.3           | 94.7       | 92.5        | 85.7  |
| 3.03iv    | Population vaccination coverage - MenC  | 2011/12   | 93.9                 | 89.1   | 93.3   | 93.4  | 93.6    | 94.1   | 88.1           | -       | 90.5   | 93.1    | 84.8      | 89.0    | 84.1                   | 87.1     | 90.6   | 95.4     | 94.5       | 94.4     | 89.5    | 94.6                   | 81.6                 | 92.6    | 88.7     | 87.8   | 84.3   | 86.2      | 89.9                 | 89.7      | 89.0   | 84.3          | 95.6           | 91.7       | 90.9        | 81.4  |
| 3.03v     | Population vaccination coverage - PCV   | 2011/12   | 94.2                 | 89.3   | 94.0   | 93.4  | 94.4    | 94.5   | 89.4           | -       | 90.7   | 93.7    | 84.7      | 89.0    | 84.4                   | 88.0     | 91.6   | 96.2     | 94.1       | 95.0     | 91.9    | 95.2                   | 85.1                 | 93.0    | 89.3     | 89.1   | 83.9   | 86.2      | 90.5                 | 90.5      | 89.6   | 83.9          | 94.2           | 91.7       | 89.1        | 83.8  |
| 3.03vi    | Population vaccination coverage - Hib / MenC booster (2 years old)                        | 2011/12   | 92.3                 | 86.4   | 93.0   | 89.2  | 92.2    | 91.9   | 86.5           | -       | 85.1   | 89.7    | 77.2      | 84.6    | 80.8                   | 84.8     | 89.9   | 92.9     | 93.2       | 92.4     | 87.6    | 90.2                   | 80.5                 | 87.8    | 83.7     | 84.4   | 75.7   | 81.7      | 87.0                 | 85.3      | 82.6   | 75.7          | 94.7           | 90.0       | 91.5        | 81.8  |
| 3.03vi    | Population vaccination coverage - Hib / Men C booster (5 years)                           | 2011/12   | 88.6                 | 81.0   | 86.2   | 88.5  | 88.1    | 92.1   | 76.3           | -       | 83.6   | 85.3    | 80.6      | 77.0    | 72.0                   | 76.8     | 75.0   | 88.4     | 88.6       | 90.3     | 86.5    | 86.3                   | 0.0                  | 82.3    | 80.1     | 77.3   | 69.5   | 75.9      | 80.7                 | 78.2      | 73.8   | 69.5          | 86.8           | 81.4       | 84.4        | 80.0  |
| 3.03vii   | Population vaccination coverage - PCV booster   | 2011/12   | 91.5                 | 82.9   | 92.0   | 86.0  | 89.8    | 91.7   | 84.9           | -       | 82.4   | 89.0    | 76.5      | 81.7    | 82.1                   | 81.4     | 85.2   | 89.9     | 90.8       | 91.2     | 85.5    | 88.4                   | 80.5                 | 87.2    | 82.2     | 83.0   | 74.7   | 81.2      | 84.8                 | 83.6      | 81.1   | 74.7          | 93.5           | 87.1       | 95.3        | 78.8  |
| 3.03viii  | Population vaccination coverage - MMR for one dose (2 years old)                          | 2011/12   | 91.2                 | 85.7   | 92.7   | 85.4  | 91.6    | 91.5   | 85.0           | -       | 83.5   | 89.1    | 80.0      | 83.3    | 81.0                   | 82.6     | 88.1   | 91.6     | 89.9       | 91.3     | 86.1    | 90.7                   | 82.9                 | 89.3    | 83.4     | 85.7   | 78.7   | 79.2      | 86.5                 | 86.5      | 82.3   | 78.7          | 93.9           | 88.4       | 86.0        | 82.1  |
| 3.03ix    | Population vaccination coverage - MMR for one dose (5 years old)                          | 2011/12   | 92.9                 | 88.7   | 94.7   | 92.3  | 95.2    | 95.2   | 84.4           | -       | 89.8   | 94.1    | 88.9      | 89.4    | 88.4                   | 85.3     | 88.0   | 95.2     | 90.3       | 93.1     | 92.3    | 93.1                   | 86.7                 | 91.3    | 87.7     | 86.7   | 85.5   | 79.8      | 89.2                 | 89.2      | 85.8   | 85.5          | 95.6           | 90.7       | 88.4        | 89.3  |
| 3.03x     | Population vaccination coverage - MMR for two doses (5 years old)                         | 2011/12   | 86.0                 | 77.9   | 87.8   | 84.9  | 89.1    | 88.5   | 70.0           | -       | 73.1   | 84.2    | 76.8      | 82.4    | 71.3                   | 73.1     | 83.1   | 89.6     | 85.5       | 88.6     | 75.8    | 83.0                   | 75.4                 | 83.3    | 76.3     | 69.7   | 77.0   | 77.3      | 77.1                 | 79.4      | 71.4   | 77.0          | 93.7           | 81.5       | 79.7        | 84.2  |
| 3.03xii   | Population vaccination coverage - HPV   | 2011/12   | 86.8                 | 84.4   | 66.2   | 75.8  | 80.7    | 83.0   | 76.7           | -       | 79.3   | 74.2    | 69.9      | 90.4    | 62.3                   | 76.4     | 66.3   | 84.5     | 89.3       | 87.2     | 85.6    | 82.1                   | 80.0                 | 77.4    | 81.5     | 80.6   | 81.1   | 91.2      | 76.9                 | 79.8      | 67.8   | 81.1          | 84.0           | 75.6       | 81.8        | 79.2  |
| 3.03xiii  | Population vaccination coverage - PPV   | 2011/12   | 68.3                 | 57.5   | 65.1   | 64.8  | 70.1    | 56.7   | 63.7           | -       | 64.3   | 56.5    | 56.4      | 68.8    | 64.0                   | 59.0     | 62.4   | 66.8     | 66.6       | 66.0     | 68.2    | 62.9                   | 57.6                 | 70.9    | 61.1     | 61.2   | 68.6   | 60.1      | 62.4                 | 71.3      | 55.6   | 68.6          | 72.1           | 53.4       | 56.3        | 64.6  |
| 3.03xiv   | Population vaccination coverage - Flu (aged 65+)  | 2011/12   | 74.0                 | 72.3   | 74.1   | 68.8  | 72.4    | 73.7   | 73.2           | -       | 68.5   | 69.9    | 74.6      | 75.4    | 75.9                   | 68.9     | 74.1   | 74.1     | 72.8       | 72.3     | 64.8    | 73.8                   | 70.3                 | 68.4    | 68.9     | 70.1   | 71.1   | 73.5      | 74.6                 | 76.9      | 71.9   | 71.1          | 76.8           | 73.8       | 72.0        | 74.8  |
| 3.03xv    | Population vaccination coverage - Flu (at risk individuals)                               | 2011/12   | 51.6                 | 55.5   | 49.0   | 48.4  | 55.6    | 47.7   | 50.3           | -       | 48.1   | 50.7    | 54.7      | 57.7    | 59.5                   | 43.4     | 53.2   | 52.5     | 55.7       | 54.2     | 44.0    | 52.8                   | 48.4                 | 47.4    | 48.6     | 45.0   | 51.0   | 59.0      | 51.9                 | 53.3      | 47.5   | 51.0          | 55.9           | 49.1       | 47.0        | 55.2  |
| 3.04      | People presenting with HIV at a late stage of infection                                   | 2009 - 11 | 50.0                 | 58.6   | 53.6   | 59.0  | 50.2    | 42.7   | 40.9           | 31.8    | 55.5   | 53.7    | 55.1      | 54.4    | 44.8                   | 37.7     | 48.7   | 51.2     | 55.6       | 56.9     | 56.4    | 35.2                   | 39.1                 | 47.4    | 38.9     | 51.8   | 47.8   | 59.7      | 60.4                 | 42.3      | 45.5   | 55.8          | 32.4           | 54.6       | 47.2        | 33.9  |
| 3.05i     | Treatment completion for TB   | 2011      | 84.3                 | 91.3   | 89.7   | 90.0  | 88.2    | 84.8   | 88.4           | -       | 85.5   | 78.6    | 83.9      | 95.0    | 89.0                   | 90.9     | 79.2   | 84.7     | 84.6       | 81.7     | 81.1    | 82.5                   | 77.8                 | 89.2    | 92.8     | 88.9   | 90.9   | 85.7      | 82.5                 | -         | 87.0   | 90.9          | 83.7           | 90.3       | 90.7        | 83.9  |
| 3.05ii    | Treatment completion for TB - TB incidence  | 2009 - 11 | 15.4                 | 37.3   | 30.6   | 10.8  | 118.0   | 11.7   | 33.7           | 20.0    | 35.3   | 70.6    | 32.4      | 51.3    | 45.0                   | 38.7     | 54.7   | 62.0     | 8.6        | 47.5     | 77.3    | 40.5                   | 26.2                 | 19.3    | 38.3     | 32.5   | 29.1   | 137.0     | 55.0                 | 9.3       | 35.5   | 16.1          | 61.0           | 48.4       | 31.1        | 27.1  |
| 3.06      | Public sector organisations with a board approved sustainable development management plan | 2011/12   | 84                   | 80     | 50     | 80    | 71      | 50     | 89             | 83      | 60     | 86      | 80        | 80      | 80                     | 71       | 67     | 83       | 80         | 60       | 88      | 86                     | 67                   | 71      | 86       | 80     | 71     | 80        | 83                   | 75        | 83     | 67            | 80             | 80         | 67          | 63    |

Comparison with respect to England value:

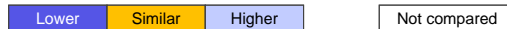




# Healthcare and premature mortality

| Indicator  | Period    | England | Barking and Dagenham | Barnet | Bexley | Brent | Bromley | Camden | City of London | Croydon | Ealing | Enfield | Greenwich | Hackney | Hammersmith and Fulham | Haringey | Harrow | Havering | Hillingdon | Hounslow | Ipswich | Kensington and Chelsea | Kingston upon Thames | Lambeth | Lewisham | Merton | Newham | Redbridge | Richmond upon Thames | Southwark | Sutton | Tower Hamlets | Waltham Forest | Wandsworth | Westminster |
|--|-----------|---------|----------------------|--------|--------|-------|---------|--------|----------------|---------|--------|---------|-----------|---------|------------------------|----------|--------|----------|------------|----------|---------|------------------------|----------------------|---------|----------|--------|--------|-----------|----------------------|-----------|--------|---------------|----------------|------------|-------------|
| 4.01 Infant mortality  | 2009 - 11 | 4.29    | 4.62                 | 4.10   | 2.72   | 4.68  | 2.44    | 4.75   | -              | 4.18    | 3.81   | 5.32    | 4.16      | 4.75    | 3.46                   | 4.66     | 6.45   | 4.04     | 4.63       | 4.51     | 3.35    | 4.07                   | 3.61                 | 6.17    | 4.67     | 4.18   | 5.16   | 4.35      | 3.30                 | 4.11      | 2.31   | 4.98          | 5.44           | 3.42       | 3.85        |
| 4.03 Mortality rate from causes considered preventable (provisional)                             | 2009 - 11 | 146.1   | 182.9                | 113.2  | 127.0  | 125.1 | 111.2   | 148.2  | 104.3          | 129.6   | 147.8  | 123.2   | 161.6     | 171.7   | 169.0                  | 152.5    | 100.9  | 130.5    | 132.5      | 145.1    | 177.6   | 116.6                  | 112.0                | 162.5   | 160.3    | 120.2  | 163.2  | 121.6     | 107.7                | 174.9     | 126.4  | 193.7         | 145.2          | 134.9      | 132.9       |
| 4.04i Under 75 mortality rate from all cardiovascular diseases (provisional)                     | 2009 - 11 | 60.9    | 81.7                 | 45.8   | 54.4   | 65.2  | 49.8    | 65.6   | -              | 64.6    | 69.6   | 57.6    | 71.3      | 86.4    | 66.5                   | 65.7     | 47.7   | 61.1     | 59.1       | 60.1     | 84.0    | 45.0                   | 50.3                 | 74.2    | 69.8     | 68.3   | 87.3   | 58.2      | 42.4                 | 72.9      | 53.9   | 87.0          | 65.7           | 64.4       | 61.5        |
| 4.04ii Under 75 mortality rate from cardiovascular diseases considered preventable (provisional) | 2009 - 11 | 40.6    | 56.2                 | 29.8   | 37.0   | 38.6  | 31.7    | 38.0   | -              | 39.7    | 47.1   | 36.9    | 48.0      | 55.3    | 42.5                   | 42.4     | 31.0   | 41.0     | 36.8       | 41.5     | 52.6    | 23.0                   | 32.8                 | 43.7    | 45.2     | 38.9   | 55.8   | 38.2      | 24.5                 | 47.0      | 28.7   | 55.4          | 41.1           | 31.8       | 34.0        |
| 4.05i Under 75 mortality rate from cancer (provisional)  | 2009 - 11 | 108.1   | 135.9                | 97.6   | 104.0  | 98.2  | 94.2    | 102.4  | -              | 98.6    | 96.3   | 96.0    | 110.6     | 111.0   | 116.9                  | 111.9    | 84.0   | 105.0    | 97.9       | 104.9    | 124.0   | 89.9                   | 95.1                 | 122.7   | 124.2    | 89.2   | 102.6  | 99.0      | 90.6                 | 117.3     | 102.9  | 128.5         | 109.4          | 101.4      | 95.1        |
| 4.05ii Under 75 mortality rate from cancer considered preventable (provisional)                  | 2009 - 11 | 61.9    | 80.0                 | 52.1   | 59.1   | 52.7  | 52.4    | 63.1   | -              | 53.2    | 56.0   | 55.9    | 64.8      | 67.3    | 73.7                   | 66.5     | 45.2   | 57.5     | 55.9       | 59.8     | 73.2    | 58.6                   | 52.0                 | 70.1    | 72.6     | 48.6   | 63.1   | 49.8      | 51.7                 | 71.3      | 60.9   | 82.6          | 65.1           | 57.8       | 54.4        |
| 4.06i Under 75 mortality rate from liver disease (provisional)                                   | 2009 - 11 | 14.4    | 18.7                 | 9.9    | 10.5   | 14.5  | 10.3    | 22.1   | -              | 13.1    | 17.2   | 13.3    | 14.6      | 19.5    | 24.4                   | 18.4     | 11.4   | 11.0     | 14.2       | 16.6     | 22.0    | 17.5                   | 15.0                 | 19.3    | 15.4     | 9.3    | 19.0   | 13.3      | 12.4                 | 20.7      | 11.5   | 21.6          | 15.1           | 14.5       | 15.3        |
| 4.06ii Under 75 mortality rate from liver disease considered preventable (provisional)           | 2009 - 11 | 12.7    | 16.0                 | 8.5    | 9.8    | 12.6  | 8.9     | 19.5   | -              | 11.9    | 13.4   | 11.7    | 12.5      | 15.5    | 20.4                   | 15.9     | 9.4    | 9.5      | 12.7       | 14.4     | 17.8    | 14.8                   | 12.7                 | 16.7    | 14.1     | 8.3    | 15.1   | 11.2      | 11.5                 | 19.0      | 10.1   | 17.1          | 13.0           | 12.7       | 13.7        |
| 4.07i Under 75 mortality rate from respiratory disease (provisional)                             | 2009 - 11 | 23.4    | 36.9                 | 17.4   | 17.0   | 17.8  | 13.7    | 17.6   | -              | 22.9    | 23.8   | 19.4    | 30.2      | 31.3    | 25.1                   | 23.2     | 17.1   | 18.5     | 21.0       | 26.1     | 24.6    | 13.8                   | 15.5                 | 28.5    | 28.1     | 18.3   | 30.5   | 19.7      | 17.0                 | 33.1      | 20.7   | 34.8          | 21.3           | 22.5       | 18.9        |
| 4.07ii Under 75 mortality rate from respiratory disease considered preventable (provisional)     | 2009 - 11 | 11.6    | 20.8                 | 7.2    | 10.7   | 5.3   | 7.4     | 9.6    | -              | 10.4    | 9.9    | 7.6     | 19.4      | 15.1    | 13.8                   | 8.1      | 5.6    | 8.2      | 9.6        | 12.9     | 12.3    | 6.4                    | 6.9                  | 16.4    | 14.3     | 9.5    | 14.4   | 8.3       | 7.0                  | 21.8      | 12.5   | 22.0          | 12.1           | 13.4       | 8.5         |
| 4.08 Mortality from communicable diseases (provisional)  | 2009 - 11 | 29.9    | 39.3                 | 32.7   | 22.8   | 30.8  | 22.7    | 24.5   | -              | 37.1    | 37.1   | 32.9    | 31.4      | 33.1    | 32.8                   | 28.8     | 31.8   | 31.8     | 34.4       | 34.8     | 34.7    | 22.6                   | 29.9                 | 35.5    | 36.7     | 27.1   | 39.0   | 31.1      | 27.2                 | 35.4      | 29.5   | 31.6          | 33.2           | 31.6       | 25.9        |
| 4.10 Suicide rate (provisional)  | 2009 - 11 | 7.9     | 5.8                  | 6.0    | 5.6    | 6.5   | 5.8     | 7.7    | -              | 4.9     | 9.3    | 5.1     | 7.4       | 8.8     | 7.4                    | 8.7      | 5.1    | 7.1      | 7.5        | 8.4      | 9.8     | 6.0                    | 5.7                  | 6.6     | 6.6      | 6.0    | 6.2    | 6.7       | 7.4                  | 7.4       | 6.4    | 6.2           | 6.4            | 7.5        | 9.1         |
| 4.11 Emergency readmissions within 30 days of discharge from hospital                            | 2010/11   | 11.8    | 12.8                 | 11.3   | 12.2   | 11.9  | 12.2    | 12.6   | 11.0           | 12.2    | 12.4   | 10.3    | 12.5      | 11.2    | 13.3                   | 11.7     | 11.7   | 11.5     | 12.2       | 12.6     | 11.9    | 12.5                   | 11.1                 | 12.4    | 11.9     | 11.8   | 9.3    | 12.4      | 12.6                 | 12.4      | 11.8   | 11.2          | 12.7           | 12.2       | 12.8        |
| 4.11 Emergency readmissions within 30 days of discharge from hospital - Male                     | 2010/11   | 12.1    | 12.6                 | 11.9   | 11.8   | 12.3  | 12.1    | 14.4   | 11.9           | 13.0    | 13.7   | 11.1    | 12.8      | 13.0    | 14.4                   | 12.4     | 11.9   | 12.2     | 12.8       | 13.1     | 12.6    | 13.6                   | 11.5                 | 14.3    | 12.5     | 11.6   | 11.7   | 13.2      | 12.1                 | 13.8      | 12.4   | 12.5          | 13.6           | 13.6       | 13.7        |
| 4.11 Emergency readmissions within 30 days of discharge from hospital - Female                   | 2010/11   | 11.4    | 12.9                 | 10.8   | 12.4   | 11.5  | 12.2    | 11.0   | 10.1           | 11.4    | 11.1   | 9.6     | 12.2      | 9.4     | 12.2                   | 11.0     | 11.5   | 10.9     | 11.7       | 12.1     | 11.2    | 11.6                   | 10.8                 | 10.6    | 11.3     | 11.9   | 7.2    | 11.7      | 12.8                 | 11.1      | 11.3   | 9.9           | 11.8           | 11.0       | 12.0        |
| 4.12i Preventable sight loss - age related macular degeneration (AMD)                            | 2011/12   | 110.5   | 139.6                | 94.3   | 80.0   | 76.1  | 80.1    | 45.5   | -              | 127.6   | 98.7   | 69.1    | 95.3      | 40.2    | 102.9                  | 62.2     | 123.9  | 105.7    | 22.6       | 148.1    | 49.7    | 124.2                  | 68.3                 | 81.8    | 64.8     | 116.3  | 77.3   | 89.4      | 74.5                 | 75.8      | 138.0  | -             | 66.0           | 84.9       | 89.3        |
| 4.12ii Preventable sight loss - glaucoma   | 2011/12   | 12.8    | 15.7                 | 11.7   | 9.6    | 23.2  | 8.2     | 8.4    | -              | 18.1    | 13.3   | 12.7    | 12.2      | 19.3    | 23.3                   | 12.8     | 18.6   | 10.6     | 5.9        | 25.1     | 19.4    | -                      | -                    | 18.3    | 18.8     | 21.9   | 15.9   | 6.1       | 13.6                 | 13.7      | 29.8   | 13.4          | 9.1            | 24.0       | 6.9         |
| 4.12iii Preventable sight loss - diabetic eye disease  | 2011/12   | 3.8     | 3.4                  | 2.3    | 3.0    | 4.9   | -       | 2.6    | -              | 4.9     | 5.3    | 3.5     | 2.4       | 4.8     | 3.8                    | 4.6      | 4.9    | 7.3      | -          | 8.4      | -       | -                      | 4.6                  | 5.2     | 4.7      | 5.9    | 4.7    | -         | 4.1                  | 8.0       | 5.6    | 2.8           | 4.1            | 2.6        |             |
| 4.12iv Preventable sight loss - sight loss certifications  | 2011/12   | 44.5    | 40.6                 | 32.7   | 33.9   | 33.9  | 35.7    | 20.0   | 67.5           | 43.9    | 34.5   | 28.3    | 29.4      | 27.5    | 31.2                   | 29.7     | 46.6   | 47.1     | 14.5       | 53.0     | 30.1    | 34.8                   | 16.2                 | 33.2    | 29.6     | 49.9   | 33.8   | 31.6      | 28.8                 | 25.3      | 56.0   | 28.5          | 33.1           | 37.4       | 30.1        |
| 4.14i Hip fractures in people aged 65 and over   | 2011/12   | 457.2   | 514.5                | 403.5  | 494.7  | 409.0 | 462.6   | 376.9  | -              | 383.7   | 394.5  | 417.6   | 461.6     | 433.0   | 452.0                  | 493.7    | 439.6  | 441.6    | 495.5      | 468.8    | 344.1   | 337.9                  | 475.5                | 469.5   | 351.6    | 418.1  | 390.5  | 453.0     | 474.5                | 433.8     | 407.0  | 514.4         | 418.5          | 472.4      | 358.6       |
| 4.14ii Hip fractures in people aged 65 and over - aged 65-79                                     | 2011/12   | 222.2   | 240.7                | 209.7  | 235.6  | 182.2 | 223.3   | 195.4  | -              | 205.9   | 187.9  | 215.1   | 274.3     | 220.1   | 297.8                  | 251.6    | 245.8  | 207.5    | 223.4      | 218.2    | 135.7   | 192.3                  | 261.3                | 292.5   | 159.4    | 169.6  | 238.4  | 215.1     | 200.6                | 216.8     | 211.4  | 260.3         | 191.4          | 235.6      | 195.5       |
| 4.14iii Hip fractures in people aged 65 and over - aged 80+                                      | 2011/12   | 1,515   | 1,747                | 1,276  | 1,661  | 1,430 | 1,539   | 1,193  | -              | 1,184   | 1,324  | 1,329   | 1,304     | 1,391   | 1,146                  | 1,583    | 1,312  | 1,495    | 1,720      | 1,597    | 1,282   | 993                    | 1,439                | 1,266   | 1,217    | 1,536  | 1,075  | 1,524     | 1,707                | 1,410     | 1,287  | 1,658         | 1,440          | 1,538      | 1,092       |

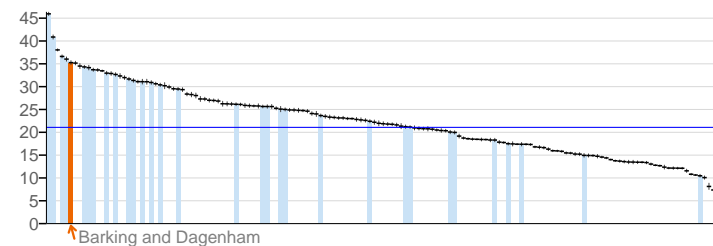
Comparison with respect to England value:



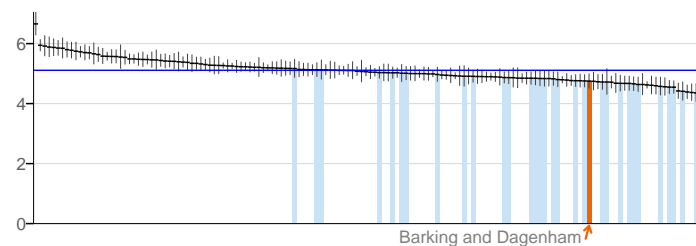
# Summary Charts

## Wider determinants of health

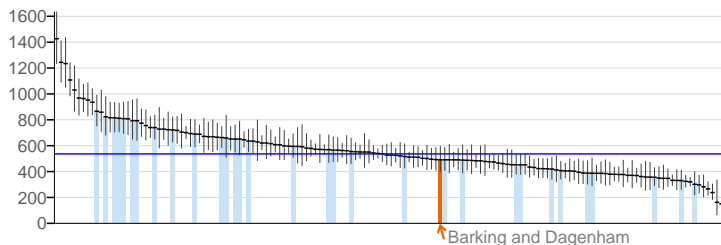
1.01. Children in poverty



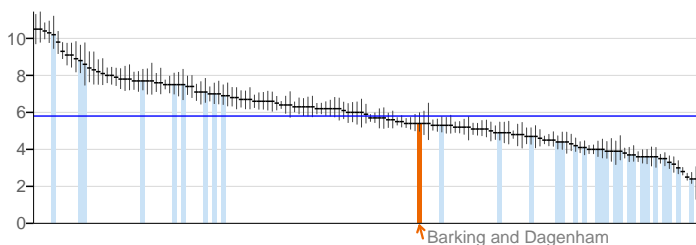
1.03. Pupil absence



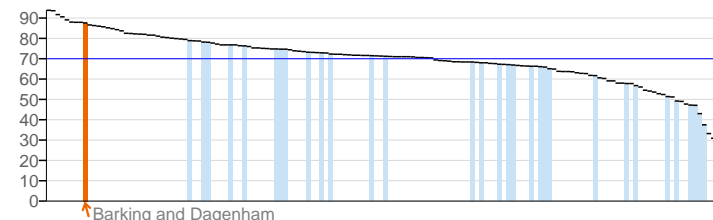
1.04i. First time entrants to the youth justice system



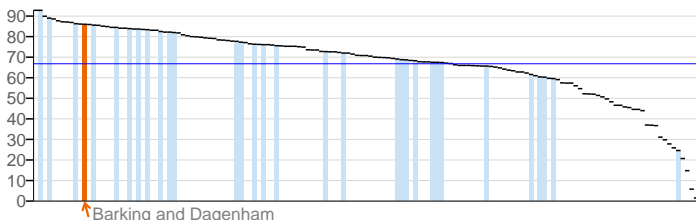
1.05. 16-18 year olds not in education employment or training



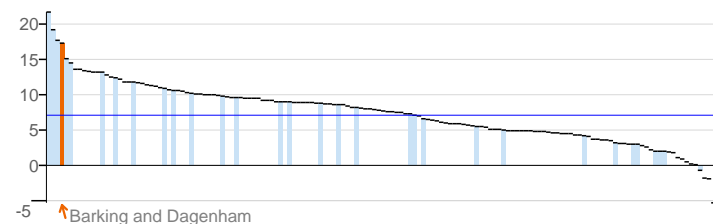
1.06i. Adults with a learning disability who live in stable and appropriate accommodation



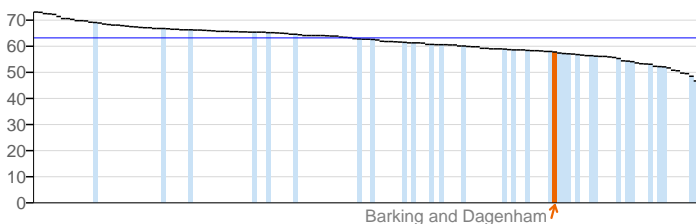
1.06ii. Adults in contact with secondary mental health services who live in stable and appropriate accommodation



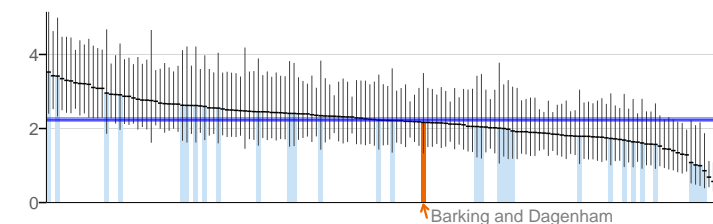
1.08i. Gap in the employment rate between those with a long-term health condition and the overall employment rate



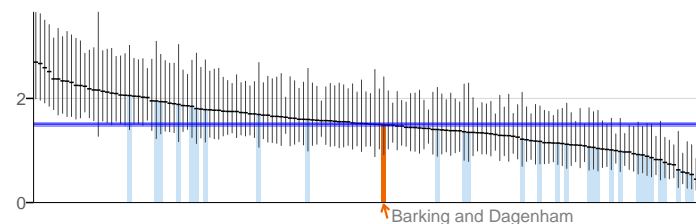
1.08ii. Gap in the employment rate between those with a learning disability and the overall employment rate



1.09i. Sickness absence - The percentage of employees who had at least one day off in the previous week



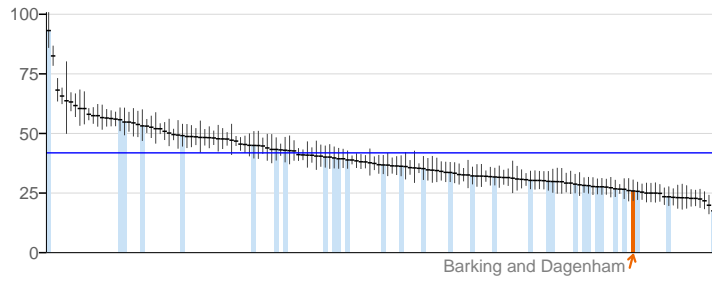
1.09ii. Sickness absence - The percent of working days lost due to sickness absence



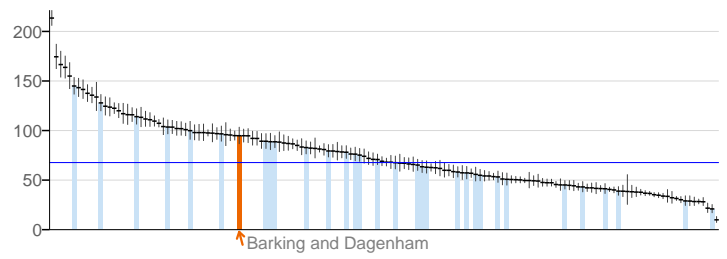
**Key**    ■ England value and confidence interval    ↑ Barking and Dagenham    ■ Other local authorities in London

Wider determinants of health

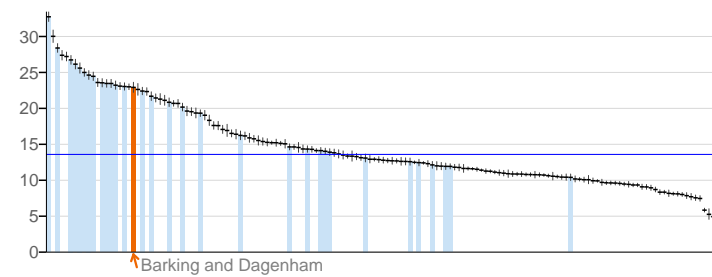
1.10. Killed and seriously injured casualties on England's roads



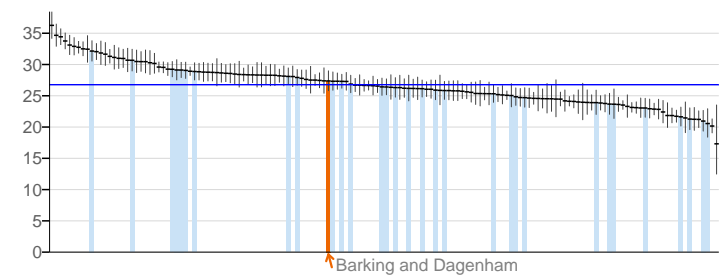
1.12i. Violent crime (including sexual violence) - hospital admissions for violence



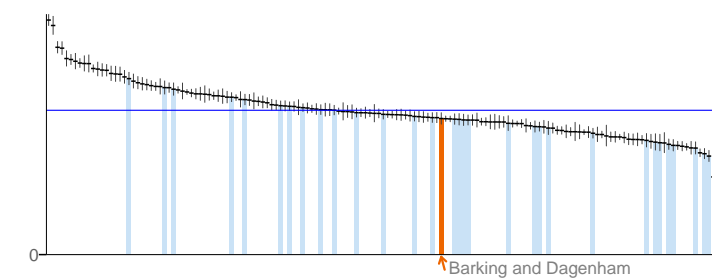
1.12ii. Violent crime (including sexual violence) - violence offences



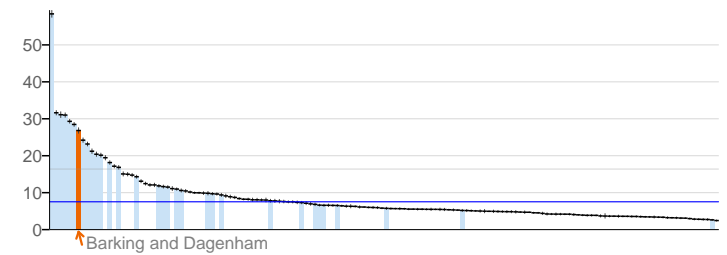
1.13i. Re-offending levels - percentage of offenders who re-offend



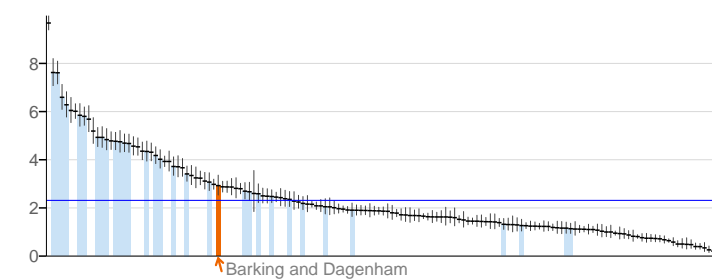
1.13ii. Re-offending levels - average number of re-offences per offender



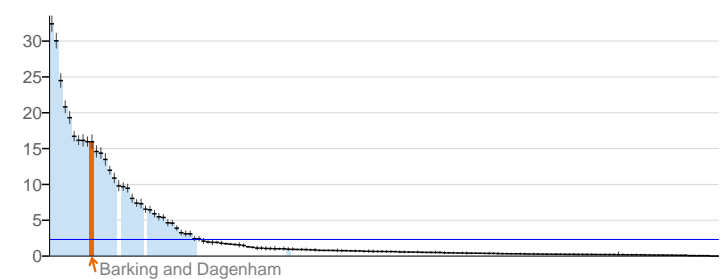
1.14i. The percentage of the population affected by noise - Number of complaints about noise



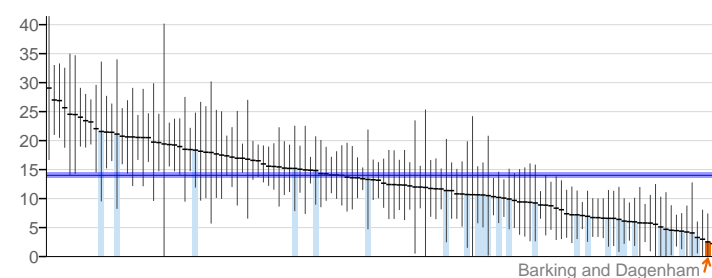
1.15i. Statutory homelessness - homelessness acceptances



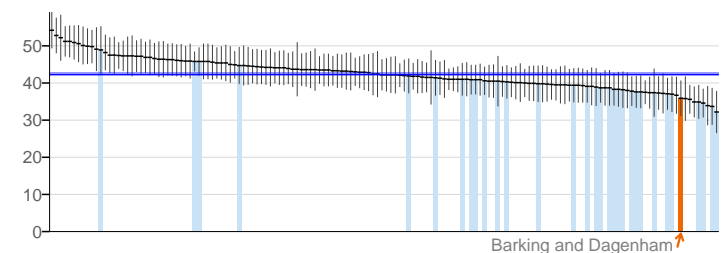
1.15ii. Statutory homelessness - households in temporary accommodation



1.16. Utilisation of outdoor space for exercise/health reasons



1.18i. Social Isolation: % of adult social care users who have as much social contact as they would like

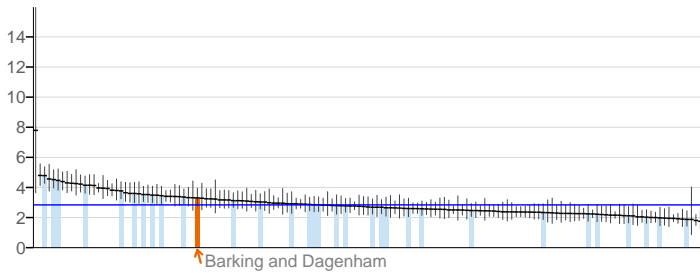


Key ■ England value and confidence interval ↑ Barking and Dagenham + Other local authorities in London

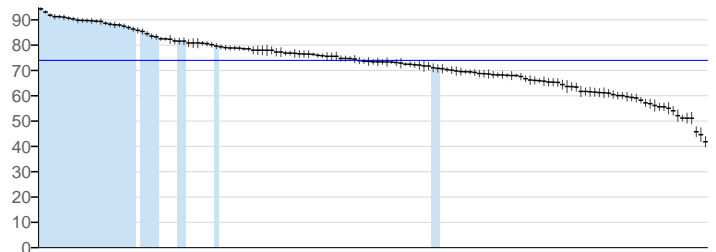
# Barking and Dagenham

## Health improvement

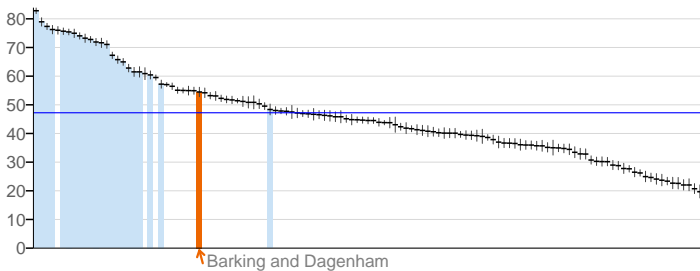
2.01. Low birth weight of term babies



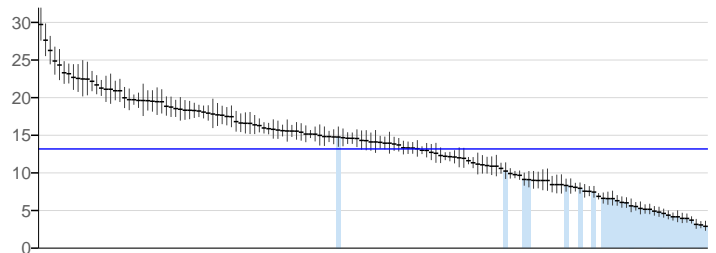
2.02i. Breastfeeding - Breastfeeding initiation



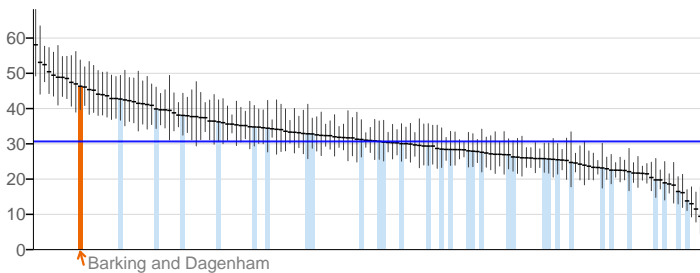
2.02ii. Breastfeeding - Breastfeeding prevalence at 6-8 weeks after birth



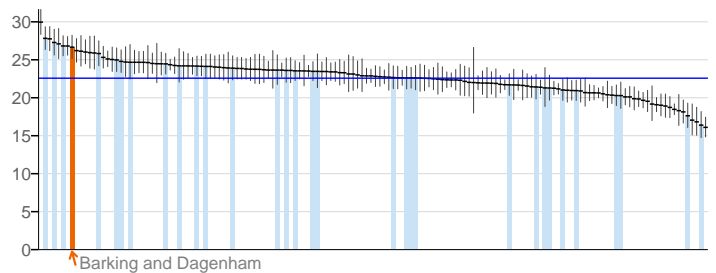
2.03. Smoking status at time of delivery



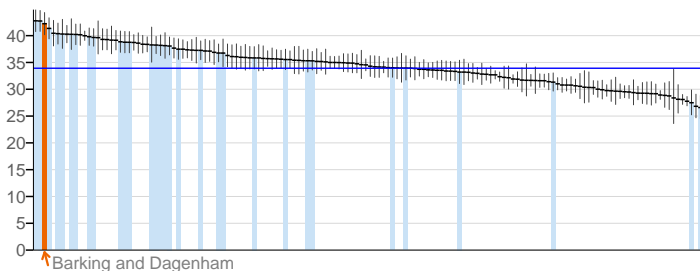
2.04. Under 18 conceptions



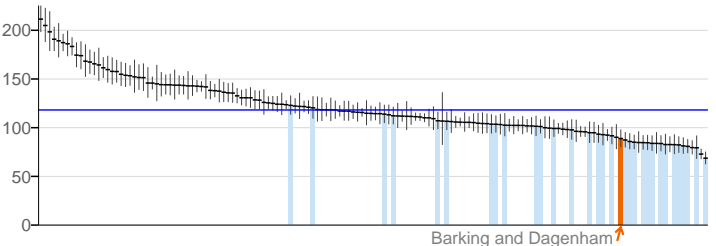
2.06i. Excess weight in 4-5 and 10-11 year olds - 4-5 year olds



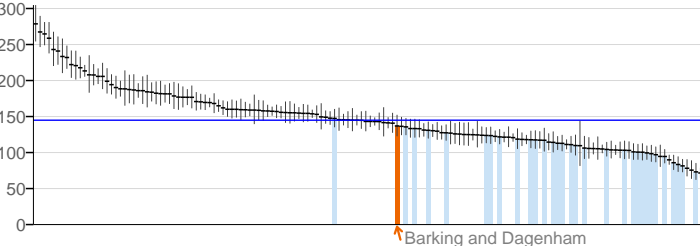
2.06ii. Excess weight in 4-5 and 10-11 year olds - 10-11 year olds



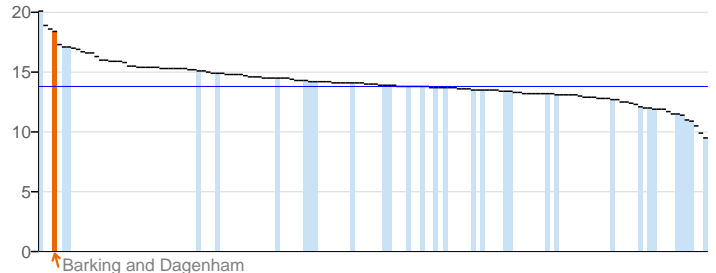
2.07i. Hospital admissions caused by unintentional and deliberate injuries in children (aged 0-14 years)



2.07ii. Hospital admissions caused by unintentional and deliberate injuries in young people (aged 15-24)



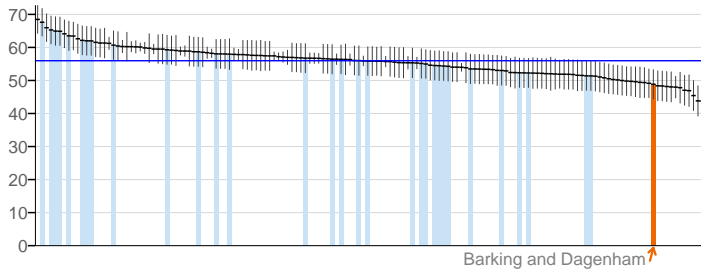
2.08. Emotional well-being of looked after children



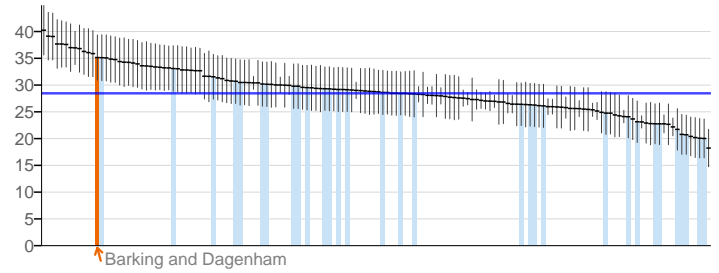
**Key**    ■ England value and confidence interval    ↑ Barking and Dagenham    □ Other local authorities in London

## Health improvement

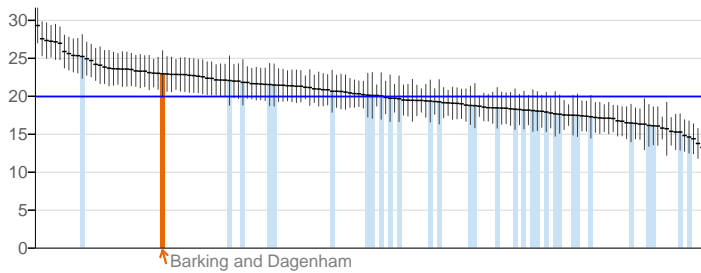
2.13i. Percentage of physically active and inactive adults - active adults



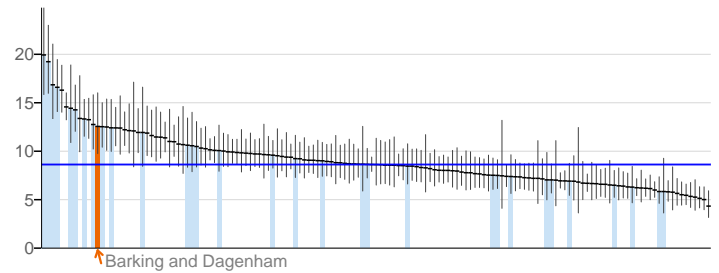
2.13ii. Percentage of active and inactive adults - inactive adults



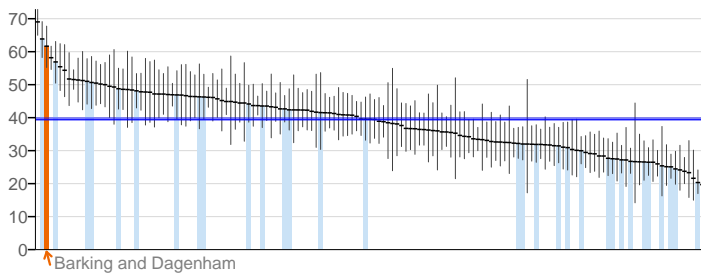
2.14. Smoking prevalence - adults (over 18s)



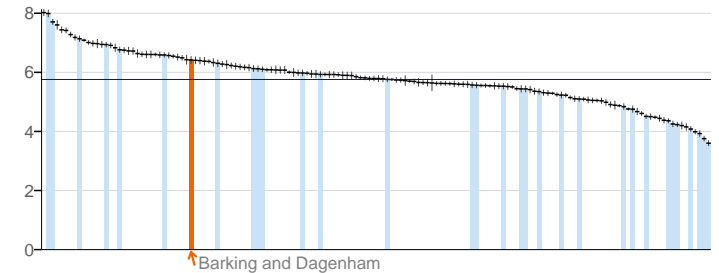
2.15i. Successful completion of drug treatment - opiate users



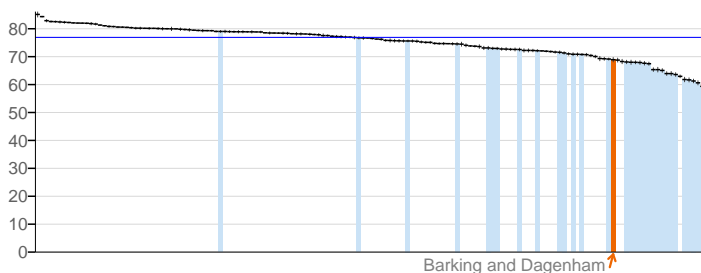
2.15ii. Successful completion of drug treatment - non-opiate users



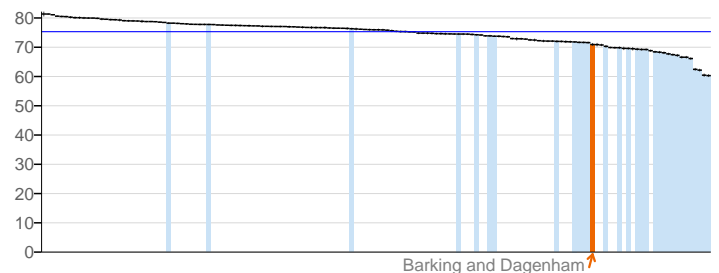
2.17. Recorded diabetes



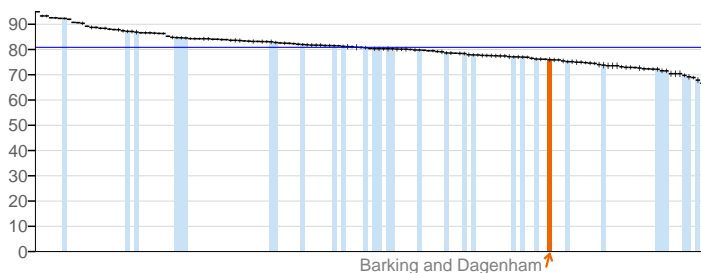
2.20i. Cancer screening coverage - breast cancer



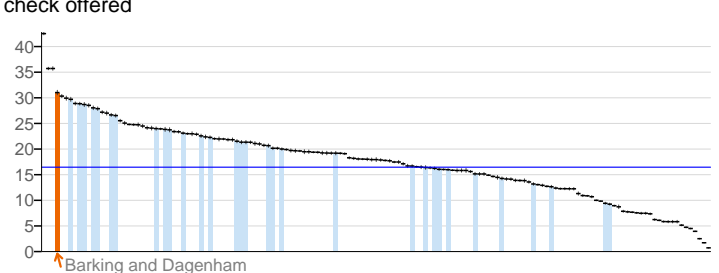
2.20ii. Cancer screening coverage - cervical cancer



2.21vii. Access to non-cancer screening programmes - diabetic retinopathy



2.22i. Take up of NHS Health Check Programme by those eligible - health check offered

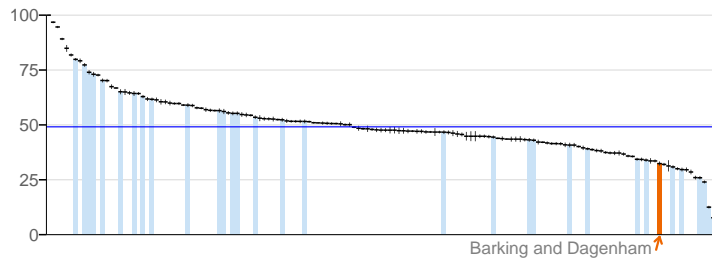


**Key** ■ England value and confidence interval    ↑ Barking and Dagenham    ■ Other local authorities in London

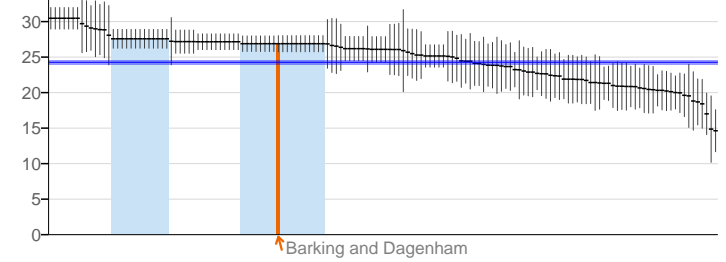
# Barking and Dagenham

## Health improvement

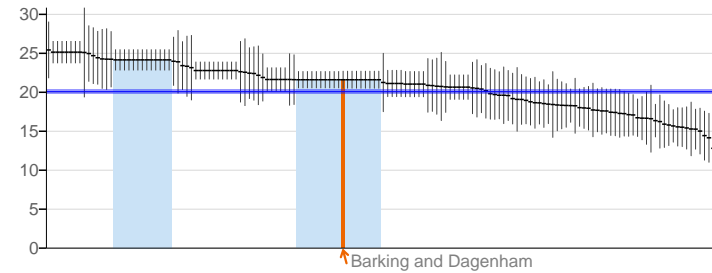
2.22ii. Take up of NHS Health Check programme by those eligible - health check take up



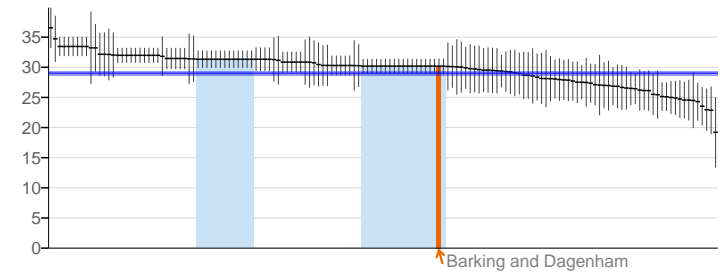
2.23i. Self-reported well-being - people with a low satisfaction score



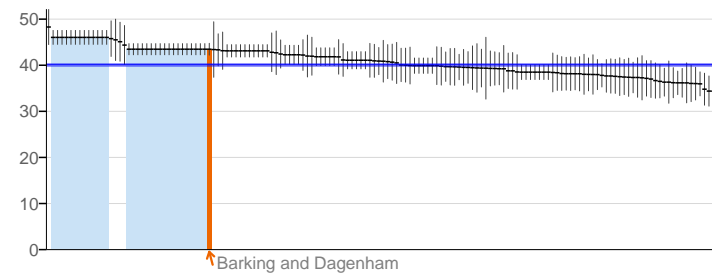
2.23ii. Self-reported well-being - people with a low worthwhile score



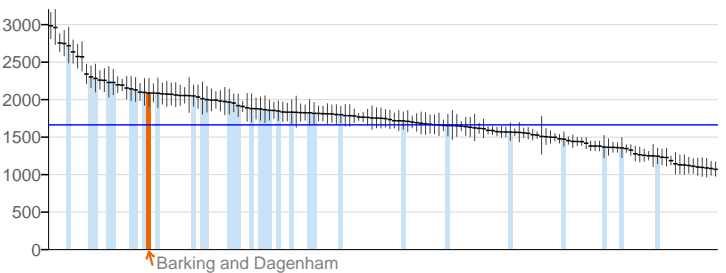
2.23iii. Self-reported well-being - people with a low happiness score



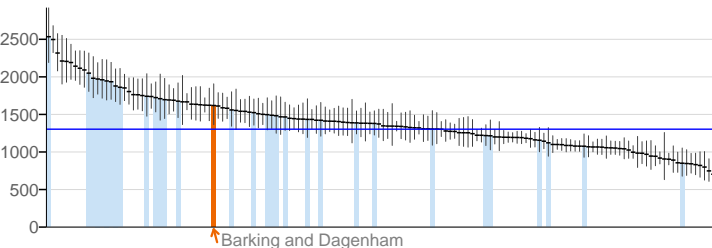
2.23iv. Self-reported well-being - people with a high anxiety score



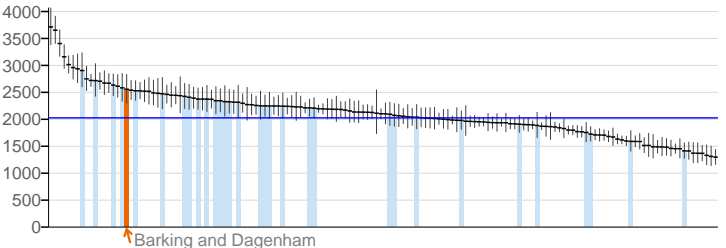
2.24i. Injuries due to falls in people aged 65 and over (Persons)



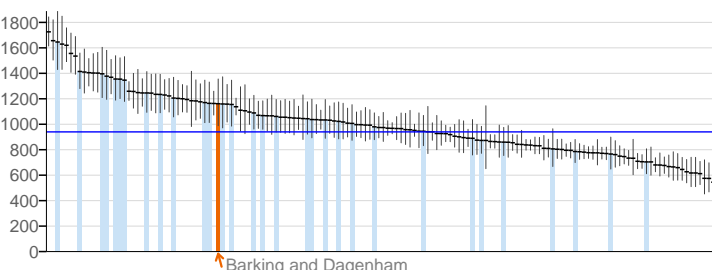
2.24i. Injuries due to falls in people aged 65 and over (males/females) - Male



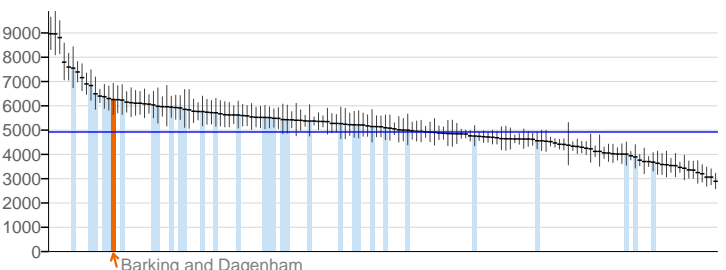
2.24i. Injuries due to falls in people aged 65 and over (males/females) - Female



2.24ii. Injuries due to falls in people aged 65 and over - aged 65-79



2.24iii. Injuries due to falls in people aged 65 and over - aged 80+

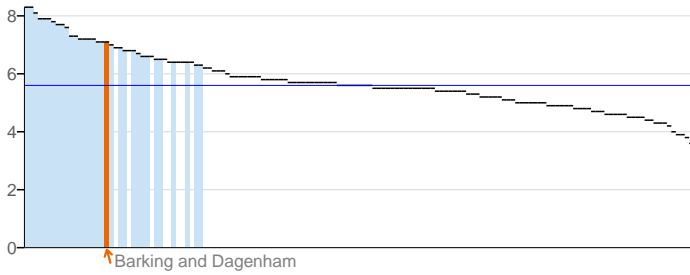


**Key**    ■ England value and confidence interval    ↑ Barking and Dagenham    ■ Other local authorities in London

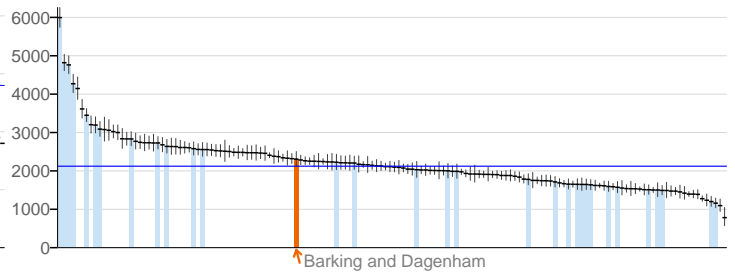


Health protection

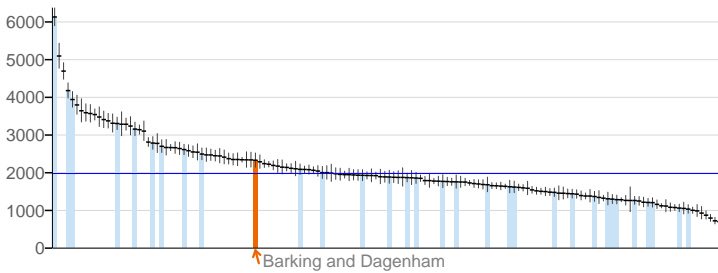
3.01. Fraction of mortality attributable to particulate air pollution



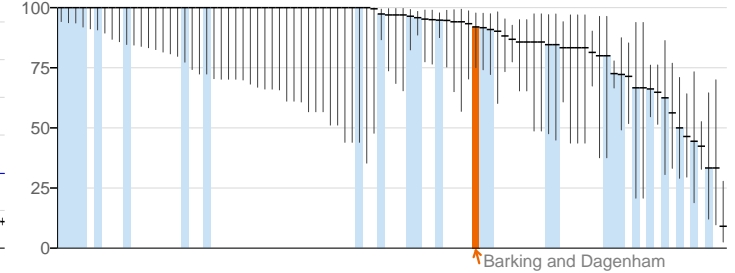
3.02i. Chlamydia diagnoses (15-24 year olds) - Old NCSP data



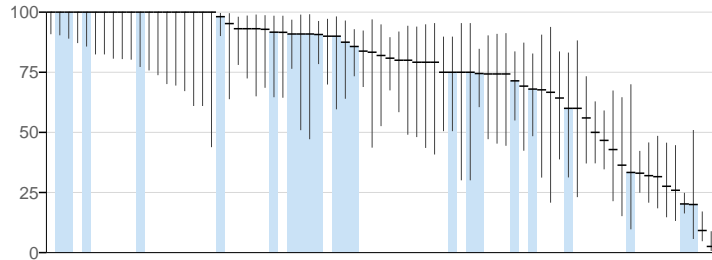
3.02ii. Chlamydia diagnoses (15-24 year olds) - CTAD



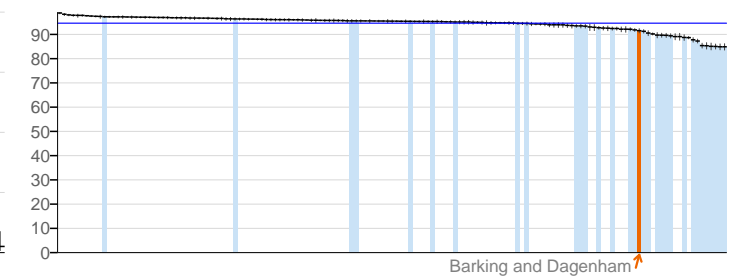
3.03i. Population vaccination coverage - Hepatitis B (1 year old)



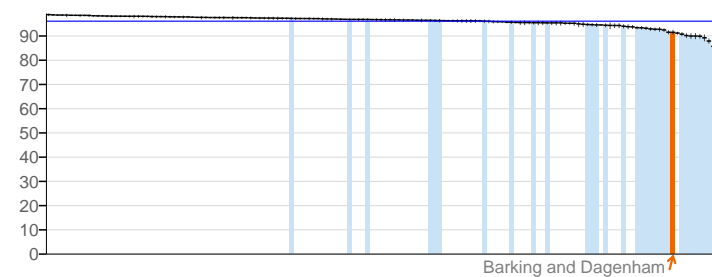
3.03i. Population vaccination coverage - Hepatitis B (2 years old)



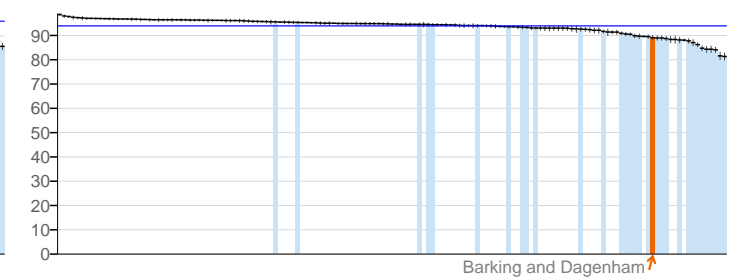
3.03iii. Population vaccination coverage - Dtap / IPV / Hib (1 year old)



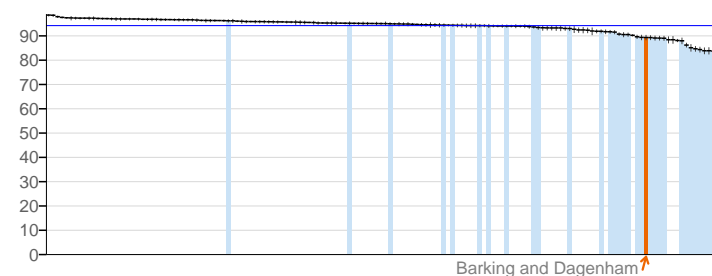
3.03iii. Population vaccination coverage - Dtap / IPV / Hib (2 years old)



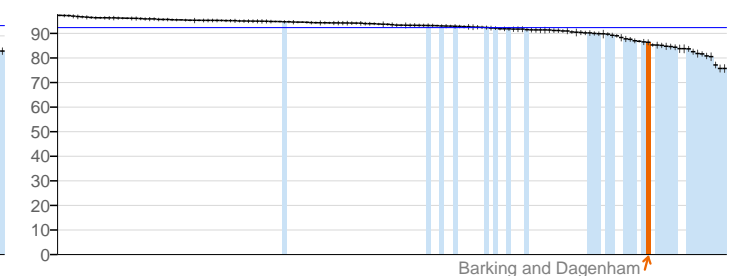
3.03iv. Population vaccination coverage - MenC



3.03v. Population vaccination coverage - PCV



3.03vi. Population vaccination coverage - Hib / MenC booster (2 years old)

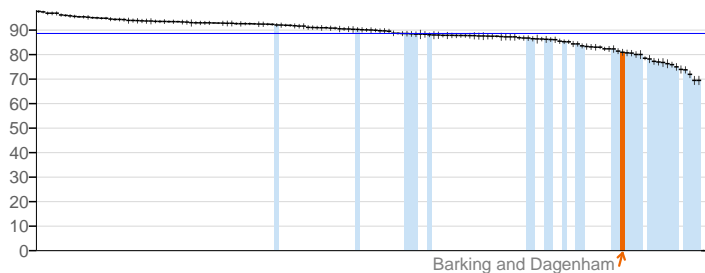


**Key**    ■ England value and confidence interval    ↑ Barking and Dagenham    □ Other local authorities in London

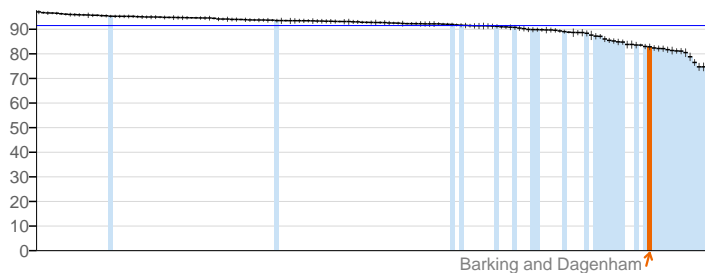
# Barking and Dagenham

## Health protection

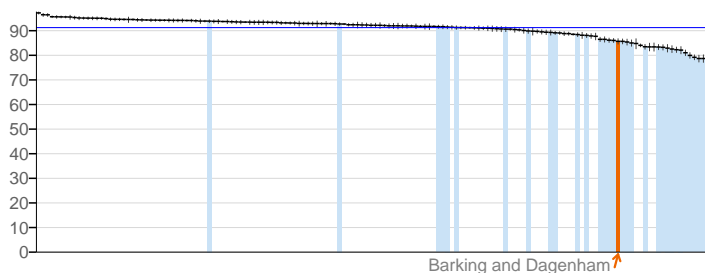
3.03vi. Population vaccination coverage - Hib / Men C booster (5 years)



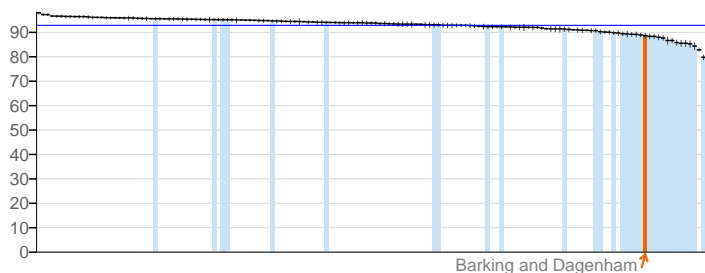
3.03vii. Population vaccination coverage - PCV booster



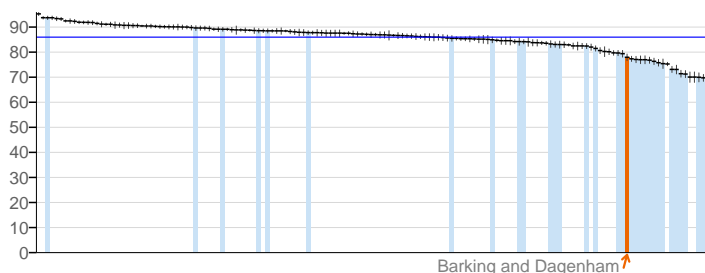
3.03viii. Population vaccination coverage - MMR for one dose (2 years old)



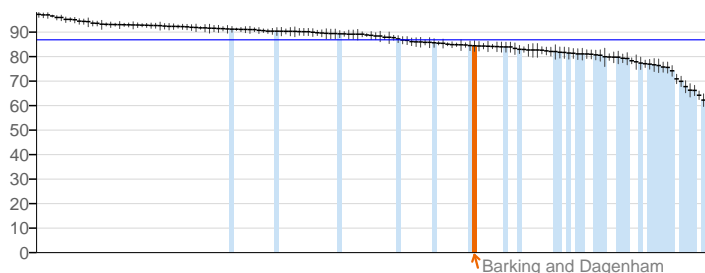
3.03ix. Population vaccination coverage - MMR for one dose (5 years old)



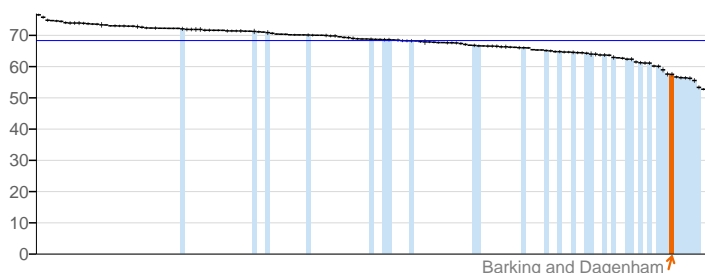
3.03x. Population vaccination coverage - MMR for two doses (5 years old)



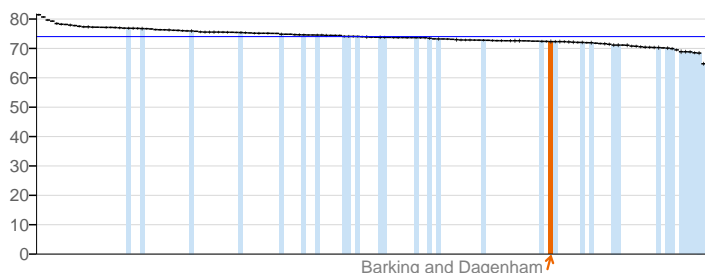
3.03xii. Population vaccination coverage - HPV



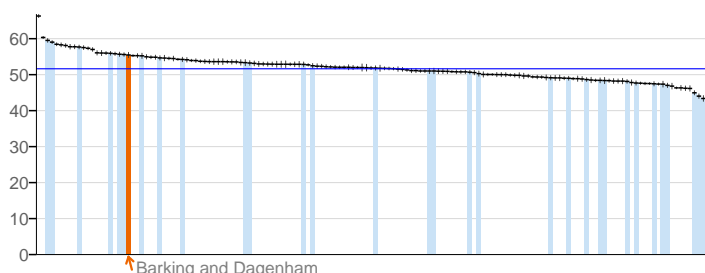
3.03xiii. Population vaccination coverage - PPV



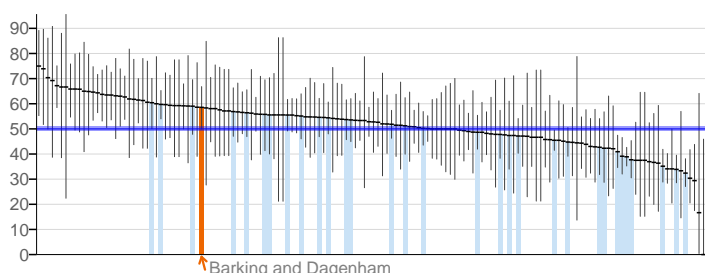
3.03xiv. Population vaccination coverage - Flu (aged 65+)



3.03xv. Population vaccination coverage - Flu (at risk individuals)



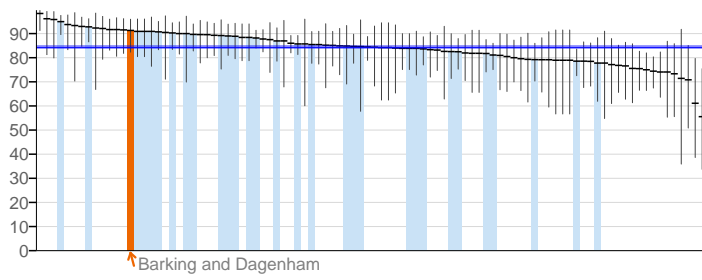
3.04. People presenting with HIV at a late stage of infection



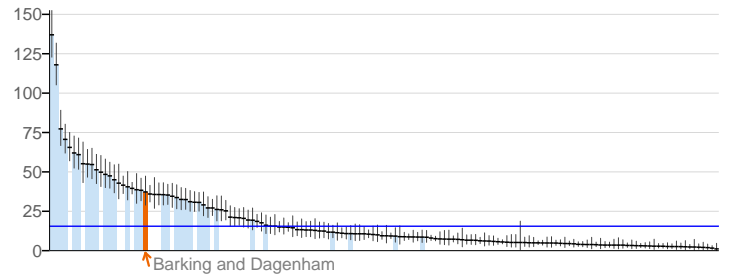
**Key**    ■ England value and confidence interval    ↑ Barking and Dagenham    □ Other local authorities in London

Health protection

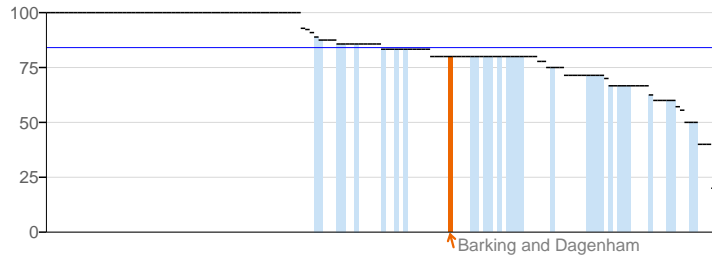
3.05i. Treatment completion for TB



3.05ii. Treatment completion for TB - TB incidence



3.06. Public sector organisations with a board approved sustainable development management plan

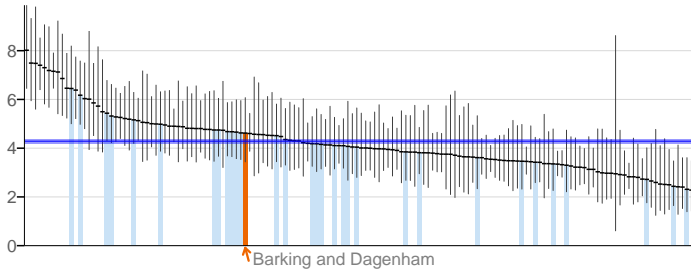


**Key**    ■ England value and confidence interval    ↑ Barking and Dagenham    ■ Other local authorities in London

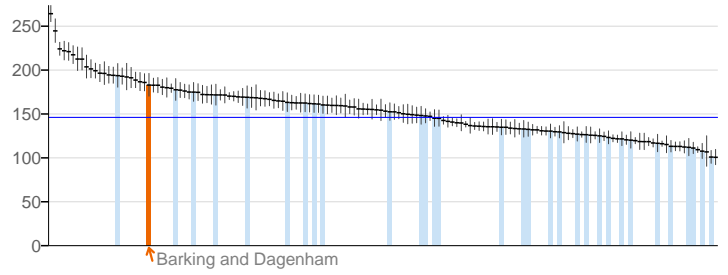
# Barking and Dagenham

## Healthcare and premature mortality

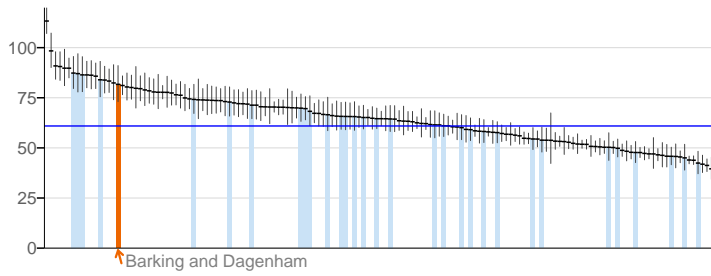
4.01. Infant mortality



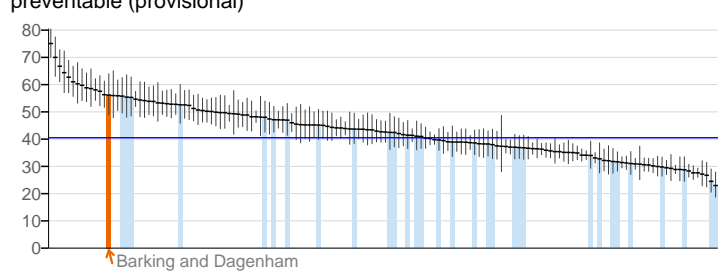
4.03. Mortality rate from causes considered preventable (provisional)



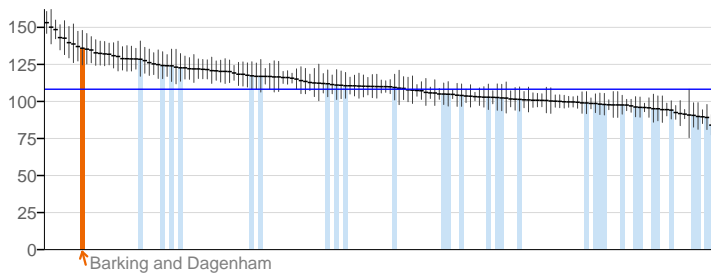
4.04i. Under 75 mortality rate from all cardiovascular diseases (provisional)



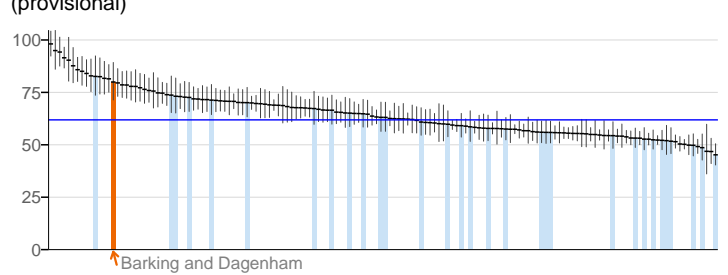
4.04ii. Under 75 mortality rate from cardiovascular diseases considered preventable (provisional)



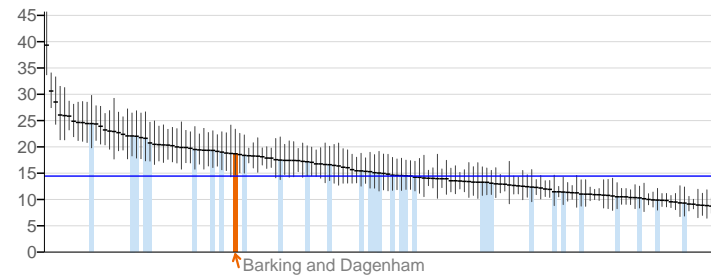
4.05i. Under 75 mortality rate from cancer (provisional)



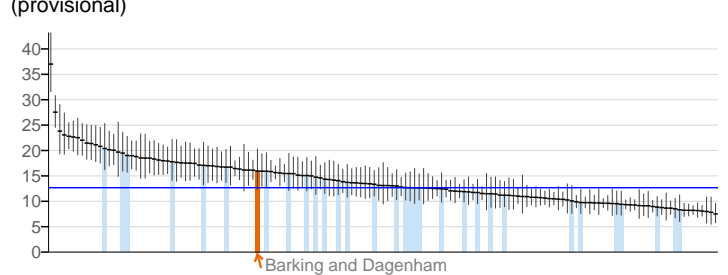
4.05ii. Under 75 mortality rate from cancer considered preventable (provisional)



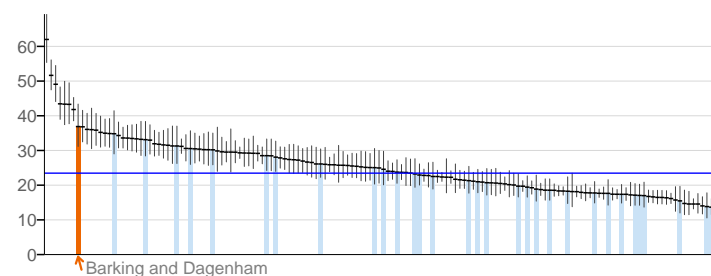
4.06i. Under 75 mortality rate from liver disease (provisional)



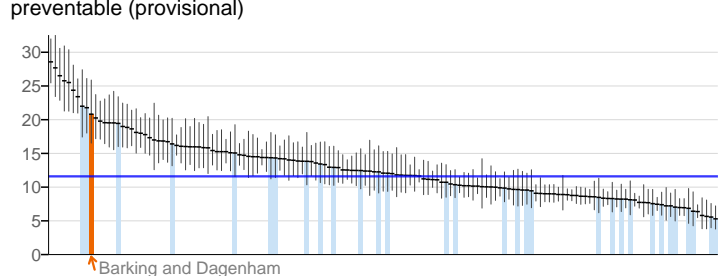
4.06ii. Under 75 mortality rate from liver disease considered preventable (provisional)



4.07i. Under 75 mortality rate from respiratory disease (provisional)



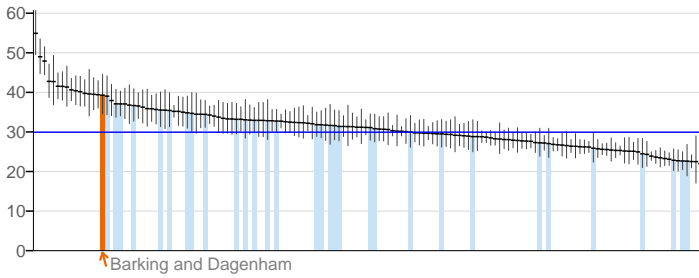
4.07ii. Under 75 mortality rate from respiratory disease considered preventable (provisional)



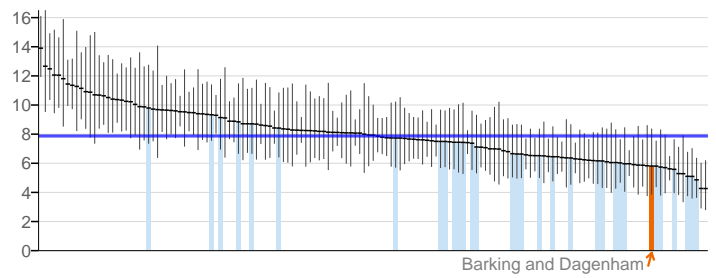
**Key** ■ England value and confidence interval ↑ Barking and Dagenham + Other local authorities in London

Healthcare and premature mortality

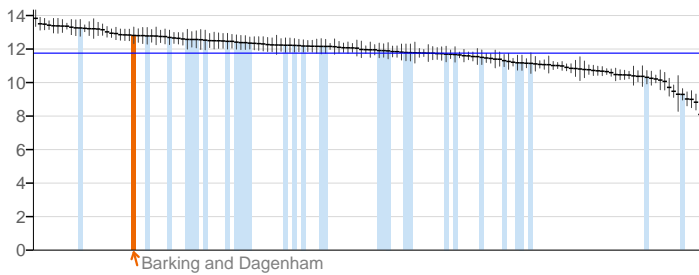
4.08. Mortality from communicable diseases (provisional)



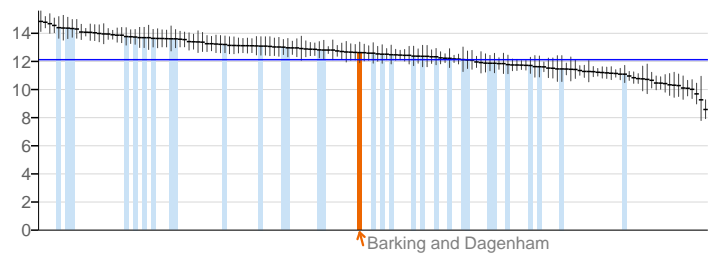
4.10. Suicide rate (provisional)



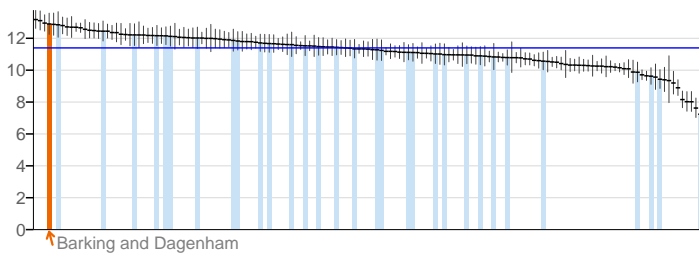
4.11. Emergency readmissions within 30 days of discharge from hospital



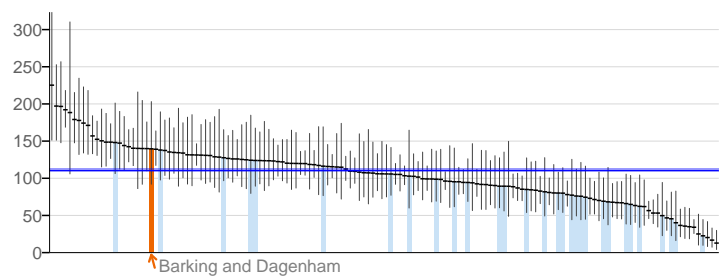
4.11. Emergency readmissions within 30 days of discharge from hospital - Male



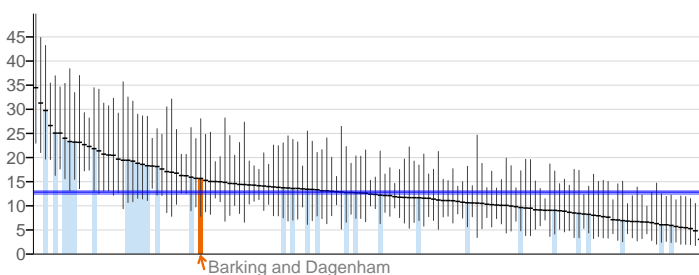
4.11. Emergency readmissions within 30 days of discharge from hospital - Female



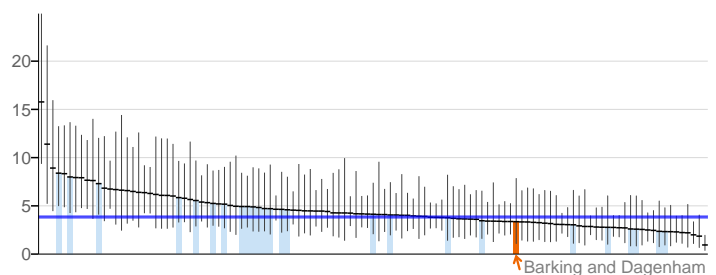
4.12i. Preventable sight loss - age related macular degeneration (AMD)



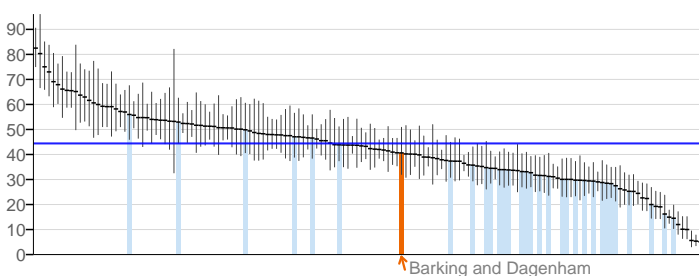
4.12ii. Preventable sight loss - glaucoma



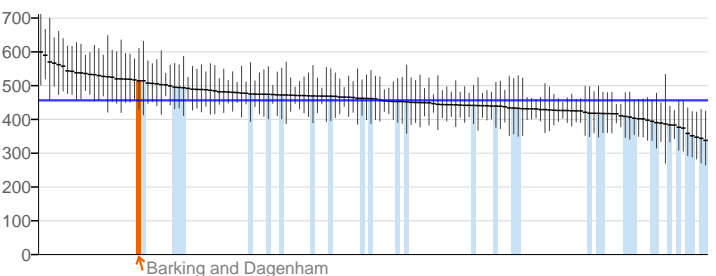
4.12iii. Preventable sight loss - diabetic eye disease



4.12iv. Preventable sight loss - sight loss certifications



4.14i. Hip fractures in people aged 65 and over

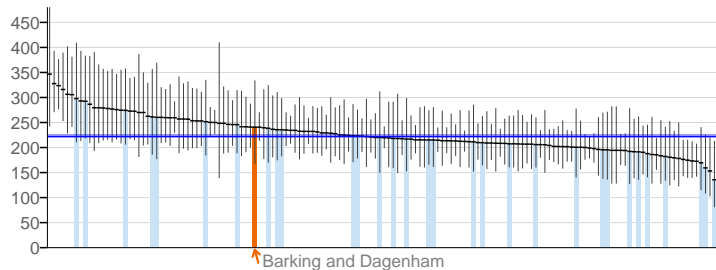


**Key** ■ England value and confidence interval    ↑ Barking and Dagenham    ■ Other local authorities in London

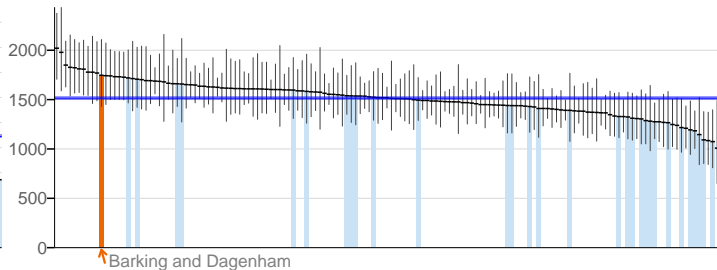
# Barking and Dagenham

## Healthcare and premature mortality

4.14ii. Hip fractures in people aged 65 and over - aged 65-79



4.14iii. Hip fractures in people aged 65 and over - aged 80+



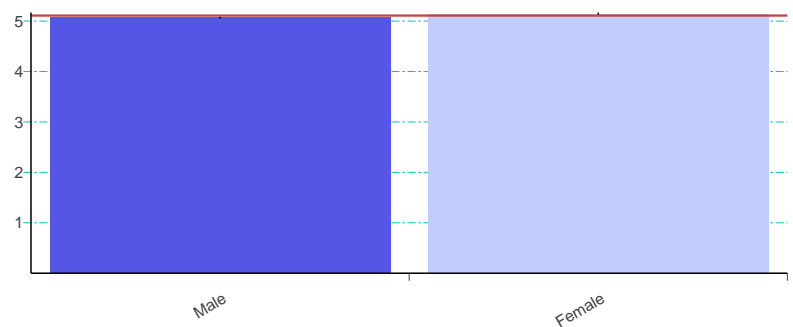


# Inequalities

The Public Health Outcomes Framework focuses the whole system on achieving positive health outcomes for the population and reducing inequalities in health. The majority of indicators in this framework have the potential to impact on inequalities and we aspire to make it possible for all indicators to be disaggregated by equalities characteristics and by socioeconomic analysis wherever possible in order to support work locally to reduce in-area health inequalities where these persist. However, in this first publication, as well as breaking down some of the local authority level indicators by gender or age, we are also presenting data by equalities characteristics for a small number of indicators at national level only. These indicators are presented in this section.

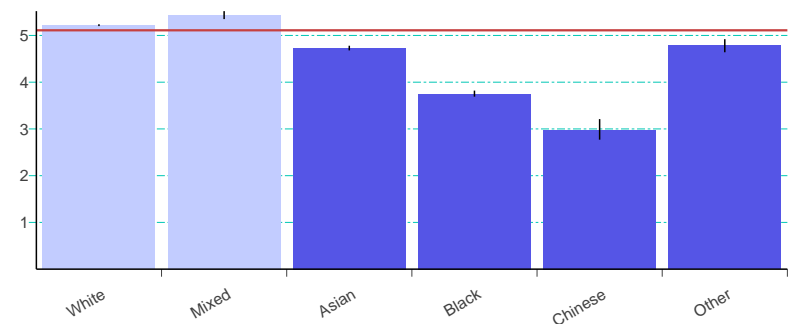
## 1.03 - Pupil absence - by gender England 2011/12

|         |   | Value | LCI  | UCI  |
|---------|---|-------|------|------|
| England | — | 5.11  | 5.09 | 5.12 |
| Male    | ● | 5.07  | 5.05 | 5.09 |
| Female  | ● | 5.14  | 5.12 | 5.17 |



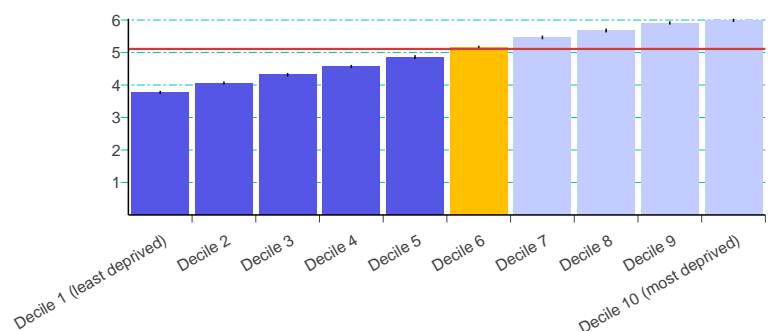
## 1.03 - Pupil absence - by ethnicity England 2011/12

|         |   | Value | LCI  | UCI  |
|---------|---|-------|------|------|
| England | — | 5.11  | 5.09 | 5.12 |
| White   | ● | 5.22  | 5.20 | 5.24 |
| Mixed   | ● | 5.44  | 5.35 | 5.52 |
| Asian   | ● | 4.73  | 4.68 | 4.78 |
| Black   | ● | 3.75  | 3.69 | 3.82 |
| Chinese | ● | 2.98  | 2.77 | 3.21 |
| Other   | ● | 4.78  | 4.64 | 4.92 |



## 1.03 - Pupil absence - by deprivation England 2011/12

|                           |   | Value | LCI  | UCI  |
|---------------------------|---|-------|------|------|
| England                   | — | 5.11  | 5.09 | 5.12 |
| Decile 1 (least deprived) | ● | 3.77  | 3.72 | 3.82 |
| Decile 2                  | ● | 4.06  | 4.01 | 4.11 |
| Decile 3                  | ● | 4.32  | 4.26 | 4.37 |
| Decile 4                  | ● | 4.57  | 4.52 | 4.62 |
| Decile 5                  | ● | 4.86  | 4.80 | 4.92 |
| Decile 6                  | ● | 5.15  | 5.09 | 5.21 |
| Decile 7                  | ● | 5.47  | 5.41 | 5.52 |
| Decile 8                  | ● | 5.68  | 5.62 | 5.74 |
| Decile 9                  | ● | 5.91  | 5.86 | 5.96 |
| Decile 10 (most deprived) | ● | 5.99  | 5.94 | 6.04 |

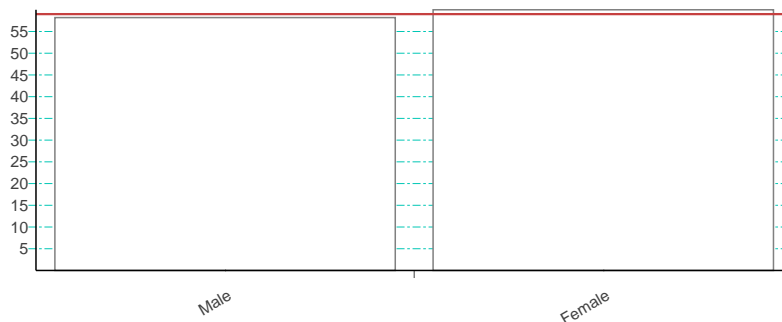


Key: ● Significantly lower ● Similar ● Significantly higher

# Barking and Dagenham

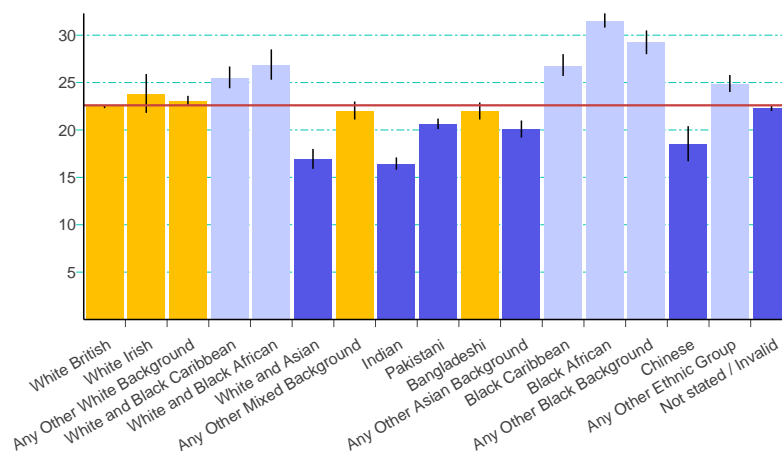
## 1.06i - Percentage of all adults with learning disabilities who are known to the council, who are recorded as living in their own home or with their family - by gender England 2011/12

|         | Value | LCI | UCI |
|---------|-------|-----|-----|
| England | 59.00 | -   | -   |
| Male    | 58.20 | -   | -   |
| Female  | 60.00 | -   | -   |



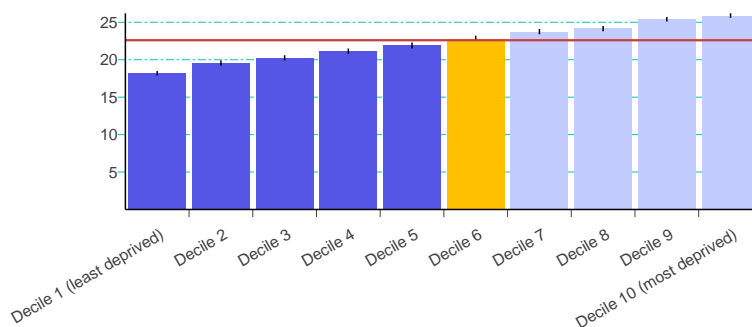
## 2.06i - Percentage of children aged 4-5 classified as overweight or obese - by ethnicity England 2011/12

|                            | Value | LCI   | UCI   |
|----------------------------|-------|-------|-------|
| England                    | 22.60 | 22.50 | 22.70 |
| White British              | 22.50 | 22.30 | 22.60 |
| White Irish                | 23.80 | 21.80 | 25.90 |
| Any Other White Background | 23.10 | 22.60 | 23.60 |
| White and Black Caribbean  | 25.50 | 24.40 | 26.70 |
| White and Black African    | 26.90 | 25.30 | 28.50 |
| White and Asian            | 16.90 | 15.90 | 18.00 |
| Any Other Mixed Background | 22.00 | 21.10 | 23.00 |
| Indian                     | 16.40 | 15.80 | 17.10 |
| Pakistani                  | 20.60 | 20.10 | 21.20 |
| Bangladeshi                | 22.00 | 21.10 | 22.90 |
| Any Other Asian Background | 20.10 | 19.20 | 21.00 |
| Black Caribbean            | 26.80 | 25.70 | 28.00 |
| Black African              | 31.50 | 30.80 | 32.30 |
| Any Other Black Background | 29.30 | 28.00 | 30.50 |
| Chinese                    | 18.50 | 16.70 | 20.40 |
| Any Other Ethnic Group     | 24.90 | 24.00 | 25.80 |
| Not stated / Invalid       | 22.30 | 22.00 | 22.60 |



## 2.06i - Percentage of children aged 4-5 classified as overweight or obese - by deprivation England 2011/12

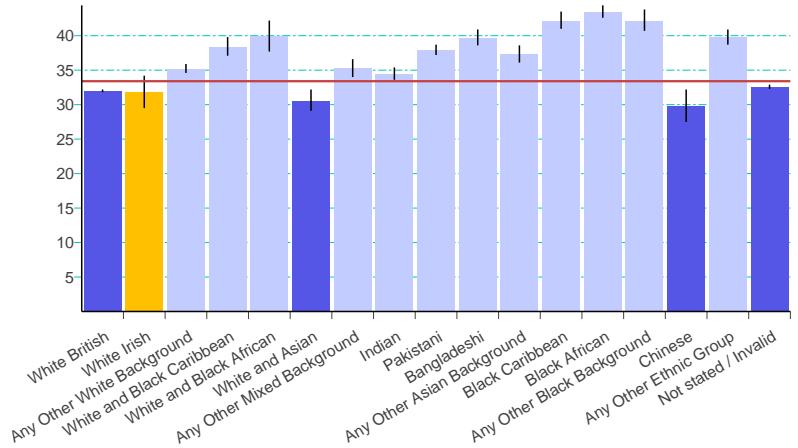
|                           | Value | LCI   | UCI   |
|---------------------------|-------|-------|-------|
| England                   | 22.60 | 22.50 | 22.70 |
| Decile 1 (least deprived) | 18.20 | 17.90 | 18.50 |
| Decile 2                  | 19.50 | 19.20 | 19.90 |
| Decile 3                  | 20.20 | 19.90 | 20.60 |
| Decile 4                  | 21.10 | 20.80 | 21.50 |
| Decile 5                  | 21.90 | 21.50 | 22.30 |
| Decile 6                  | 22.80 | 22.50 | 23.20 |
| Decile 7                  | 23.70 | 23.40 | 24.10 |
| Decile 8                  | 24.20 | 23.80 | 24.50 |
| Decile 9                  | 25.40 | 25.10 | 25.70 |
| Decile 10 (most deprived) | 25.90 | 25.60 | 26.20 |



Key: ● Significantly lower ● Similar ● Significantly higher

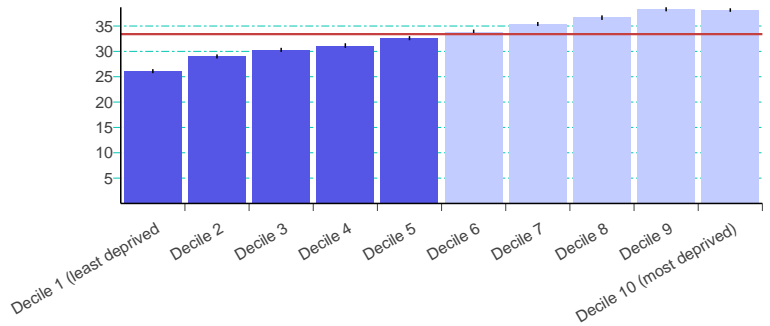
2.06ii - Percentage of children aged 10-11 classified as overweight or obese - by ethnicity England 2011/12

|                            | Value | LCI   | UCI   |
|----------------------------|-------|-------|-------|
| England                    | 33.40 | 33.30 | 33.50 |
| White British              | 32.00 | 31.80 | 32.20 |
| White Irish                | 31.80 | 29.50 | 34.20 |
| Any Other White Background | 35.20 | 34.60 | 35.90 |
| White and Black Caribbean  | 38.40 | 37.10 | 39.80 |
| White and Black African    | 39.90 | 37.70 | 42.20 |
| White and Asian            | 30.60 | 29.10 | 32.20 |
| Any Other Mixed Background | 35.30 | 34.00 | 36.60 |
| Indian                     | 34.50 | 33.60 | 35.40 |
| Pakistani                  | 37.90 | 37.20 | 38.70 |
| Bangladeshi                | 39.70 | 38.60 | 40.90 |
| Any Other Asian Background | 37.30 | 36.10 | 38.60 |
| Black Caribbean            | 42.20 | 41.00 | 43.50 |
| Black African              | 43.50 | 42.60 | 44.40 |
| Any Other Black Background | 42.20 | 40.70 | 43.80 |
| Chinese                    | 29.80 | 27.50 | 32.20 |
| Any Other Ethnic Group     | 39.80 | 38.70 | 40.90 |
| Not stated / Invalid       | 32.60 | 32.30 | 32.90 |



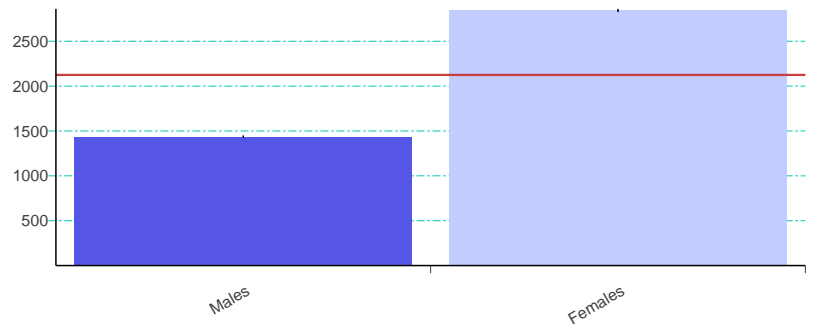
2.06ii - Percentage of children aged 10-11 classified as overweight or obese - by deprivation England 2011/12

|                           | Value | LCI   | UCI   |
|---------------------------|-------|-------|-------|
| England                   | 33.40 | 33.30 | 33.50 |
| Decile 1 (least deprived) | 26.10 | 25.70 | 26.50 |
| Decile 2                  | 29.00 | 28.60 | 29.40 |
| Decile 3                  | 30.30 | 29.90 | 30.70 |
| Decile 4                  | 31.10 | 30.70 | 31.60 |
| Decile 5                  | 32.60 | 32.20 | 33.00 |
| Decile 6                  | 33.90 | 33.40 | 34.30 |
| Decile 7                  | 35.40 | 35.00 | 35.80 |
| Decile 8                  | 36.70 | 36.20 | 37.10 |
| Decile 9                  | 38.30 | 37.90 | 38.70 |
| Decile 10 (most deprived) | 38.10 | 37.80 | 38.50 |



3.02 - Chlamydia diagnosis (15-24 year olds) - by gender England 2011

|         | Value | LCI   | UCI   |
|---------|-------|-------|-------|
| England | 2,125 | 2,114 | 2,136 |
| Males   | 1,438 | 1,425 | 1,450 |
| Females | 2,843 | 2,825 | 2,861 |



Key: ● Significantly lower ● Similar ● Significantly higher